



**MODEL A400**

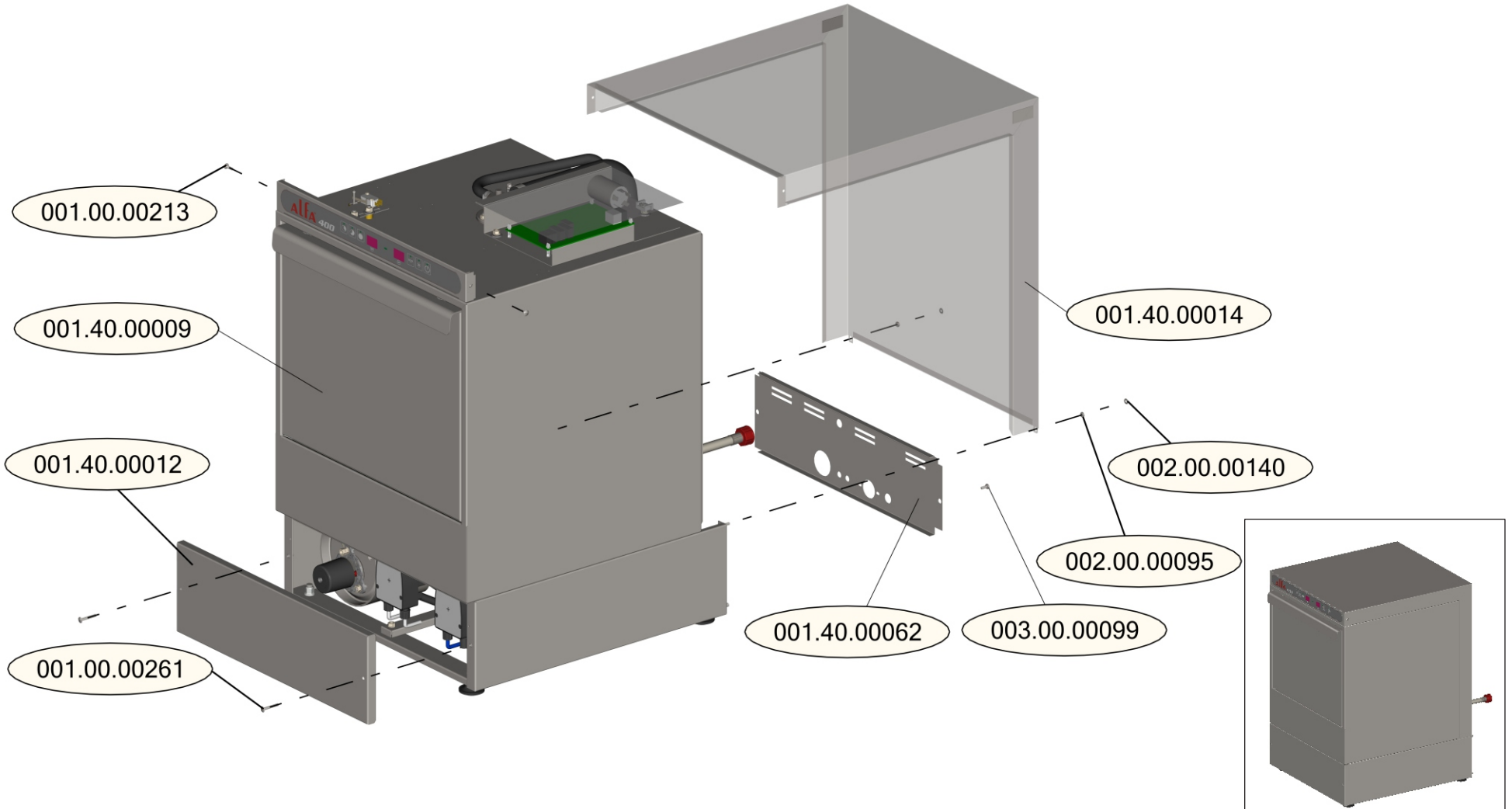
004.40.00009

**MODEL : A400**

DESCRIPTION : STEEL STRUCTURE AND COVERS

ITEM CODE : -

PART ID	DESCRIPTION	QTY
001.40.00014	COVER UPPER-BACK INOX EU40	1
001.00.00213	INOX SCREW M4X15	2
002.00.00140	LOCK WASHER D4 INOX	2
002.00.00095	NUT M4 INOX	2
001.40.00012	COVER LOWER FRONT INOX BL35	1
001.00.00261	INOX SCREW M4X30	2
001.40.00009	DOOR SET ASSEMBLY	1
001.40.00062	BASE INOX COVER MOD 40	1
003.00.00099	HEX BOLT M4x10	2

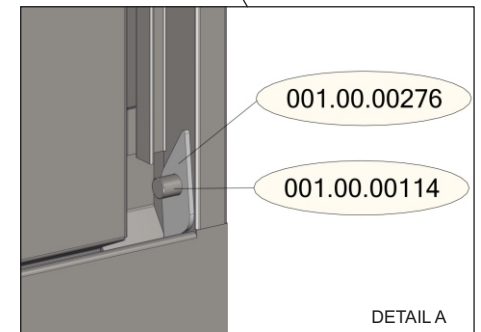
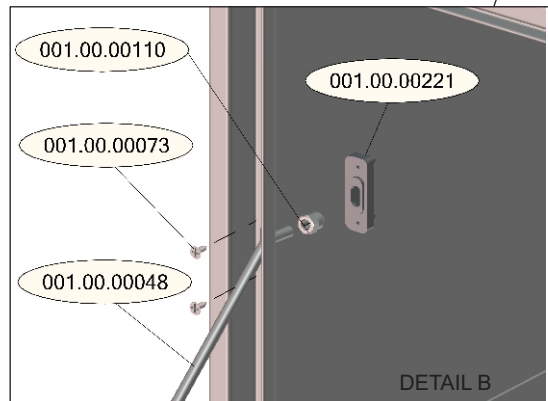
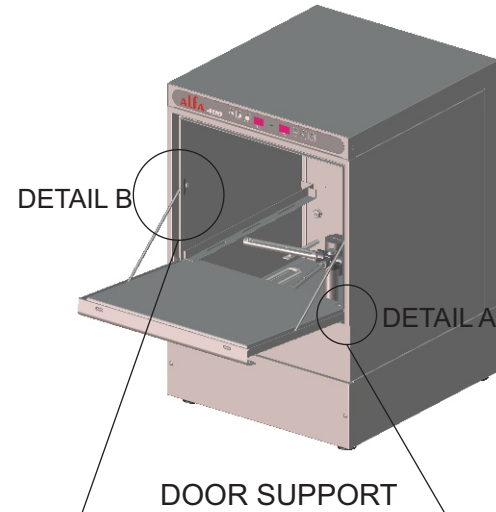
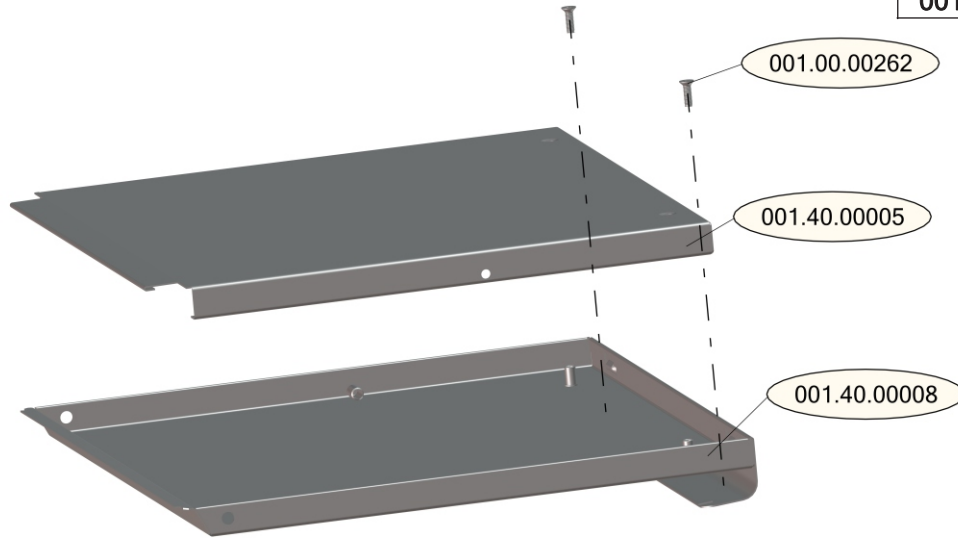


**MODEL : A400**

DESCRIPTION : DOOR SET

ITEM CODE : 001.40.00009

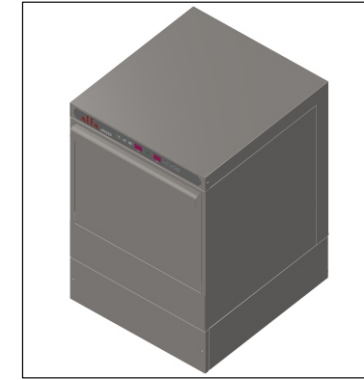
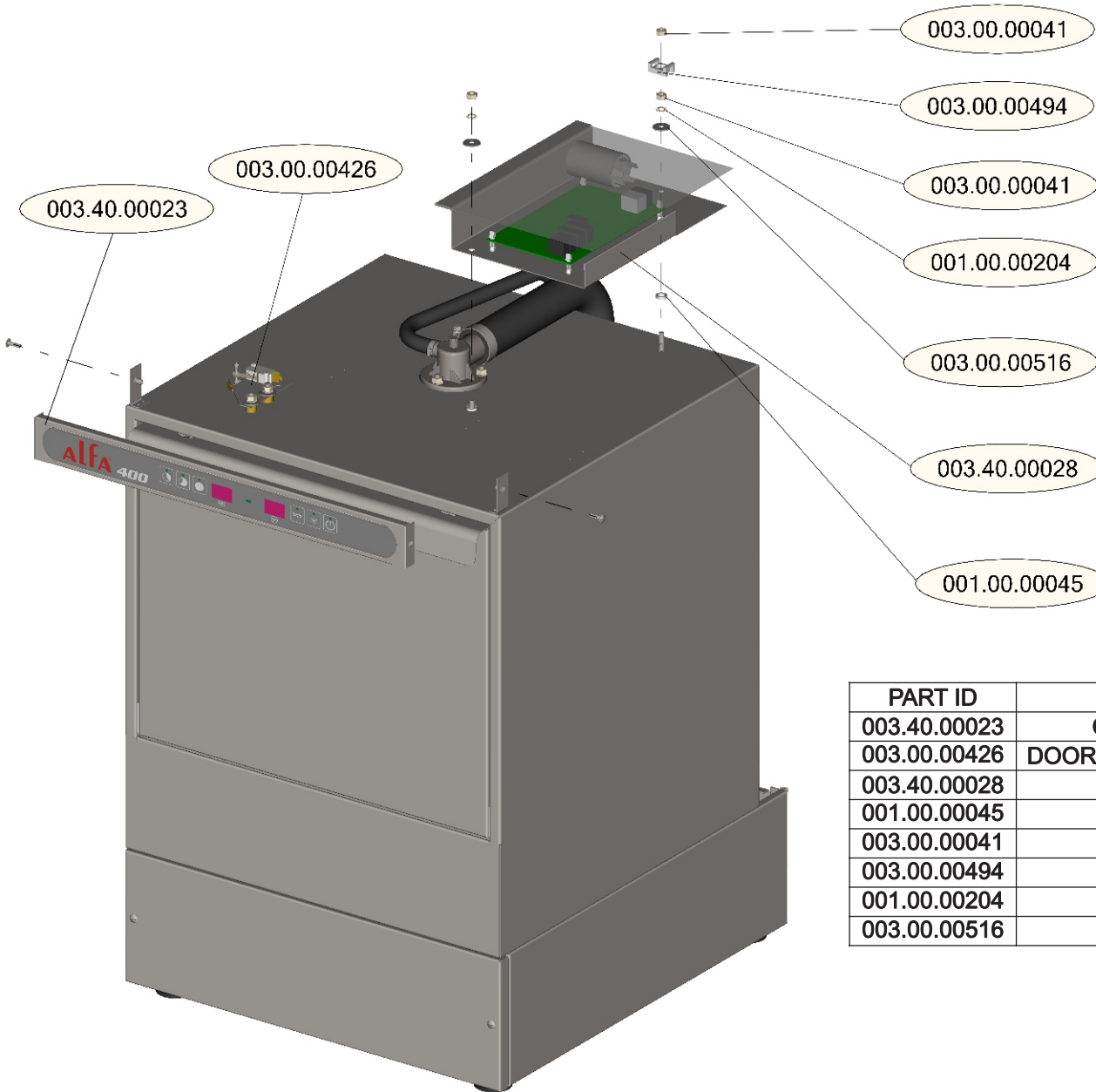
PART ID	DESCRIPTION	QTY
001.00.00276	DOOR SPACER PLASTIC N	2
001.00.00114	DOOR SUPPORT D8x23	2
001.00.00262	INOX TAPERD SCREW M5X16	2
001.40.00008	DOOR EXTERNAL PART	1
001.40.00005	DOOR INTERNAL PART	1
001.00.00221	PLASTIC GUIDE FOR DOOR AXLE	2
001.00.00110	DOMED NUT M6	2
001.00.00073	INOX SCREW 2.9x10	4
001.00.00048	DOOR SUPPORT AXLE	2



**MODEL : A400**

**DESCRIPTION : ELECTRICAL EQUIPMENT - TOP**

**ITEM CODE : -**



PART ID	DESCRIPTION	QTY
003.40.00023	CONTROL PANEL COMPLETE A400	1
003.00.00426	DOOR SWITCH ELECTRICAL PART COMPLETE	1
003.40.00028	BOARD PANEL COMPLETE A400	1
001.00.00045	TEFLON WASHER D12.5x8x2.5	2
003.00.00041	NUT M6 GALVANISED	3
003.00.00494	CABLE PLASTIC CLAMP	1
001.00.00204	LOCK WASHER D6	2
003.00.00516	WASHER D6x18 GALVANISED	2

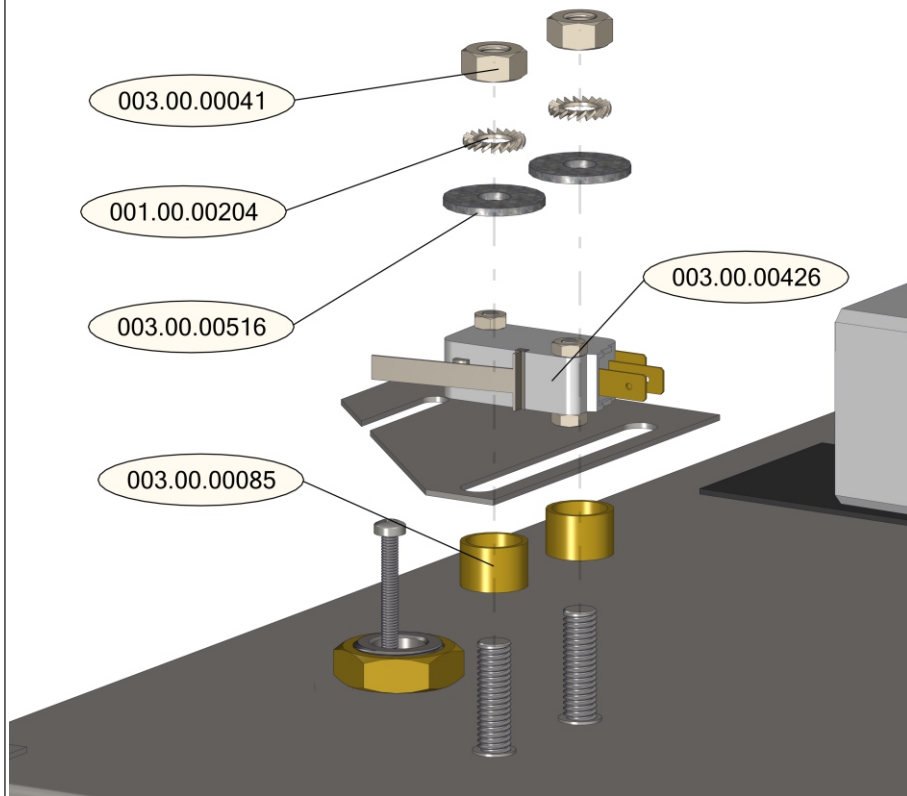
**MODEL : A400**

DESCRIPTION : DOOR SWITCH ELECTRICAL PART COMP.

ITEM CODE : 003.00.00426

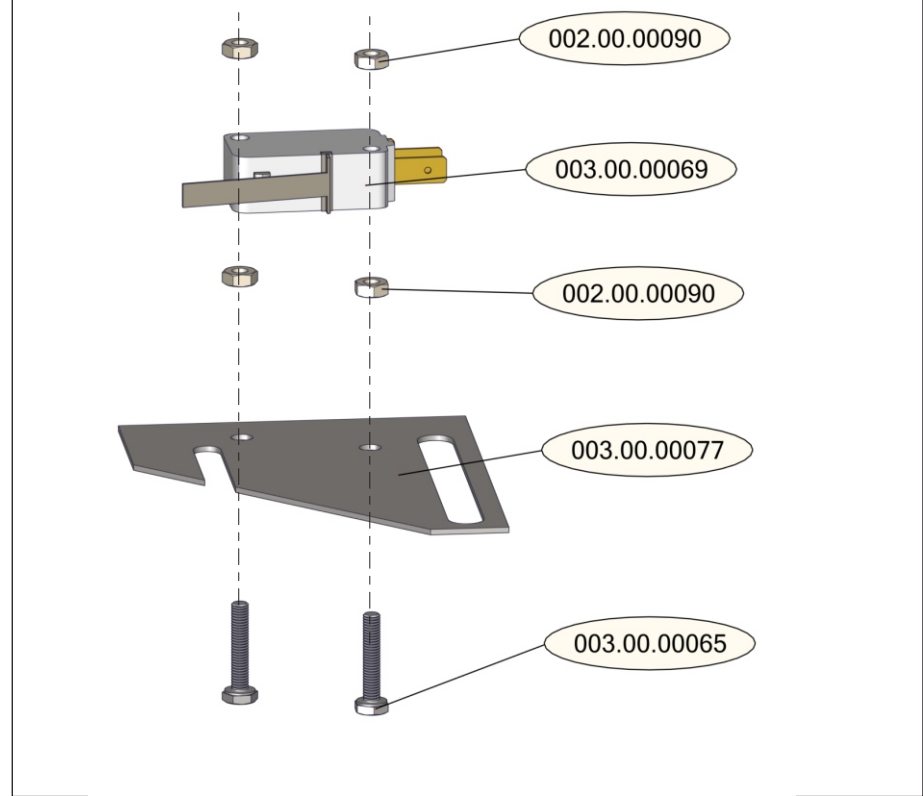
PART ID	DESCRIPTION	QTY
003.00.00426	DOOR SWITCH ELECTRICAL PART	1
003.00.00085	SPACER FOR DOOR SWITCH	2
003.00.00516	WASHER D6x18 GALVANISED	2
002.00.00204	LOCK WASHER D6	2
003.00.00041	NUT M6 GALVANISED	1

DOOR SWITCH ELECTRICAL PART - SUPPORT



PART ID	DESCRIPTION	QTY
003.00.00069	DOOR MICROSWITCH 16A	1
002.00.00090	NUT M3 GALVANISED	4
003.00.00077	STEEL ELECTRICAL DOOR SWITCH PLATE	1
002.00.00065	HEX BOLT M3x16 GALVANISED	2

DOOR SWITCH ELECTRICAL PART - ASSEMBLY

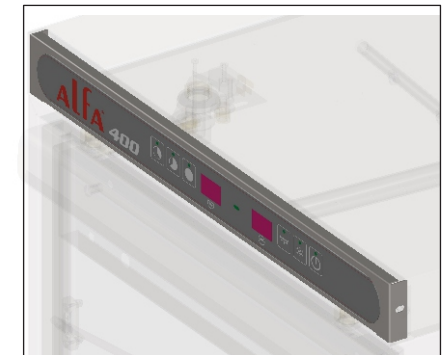
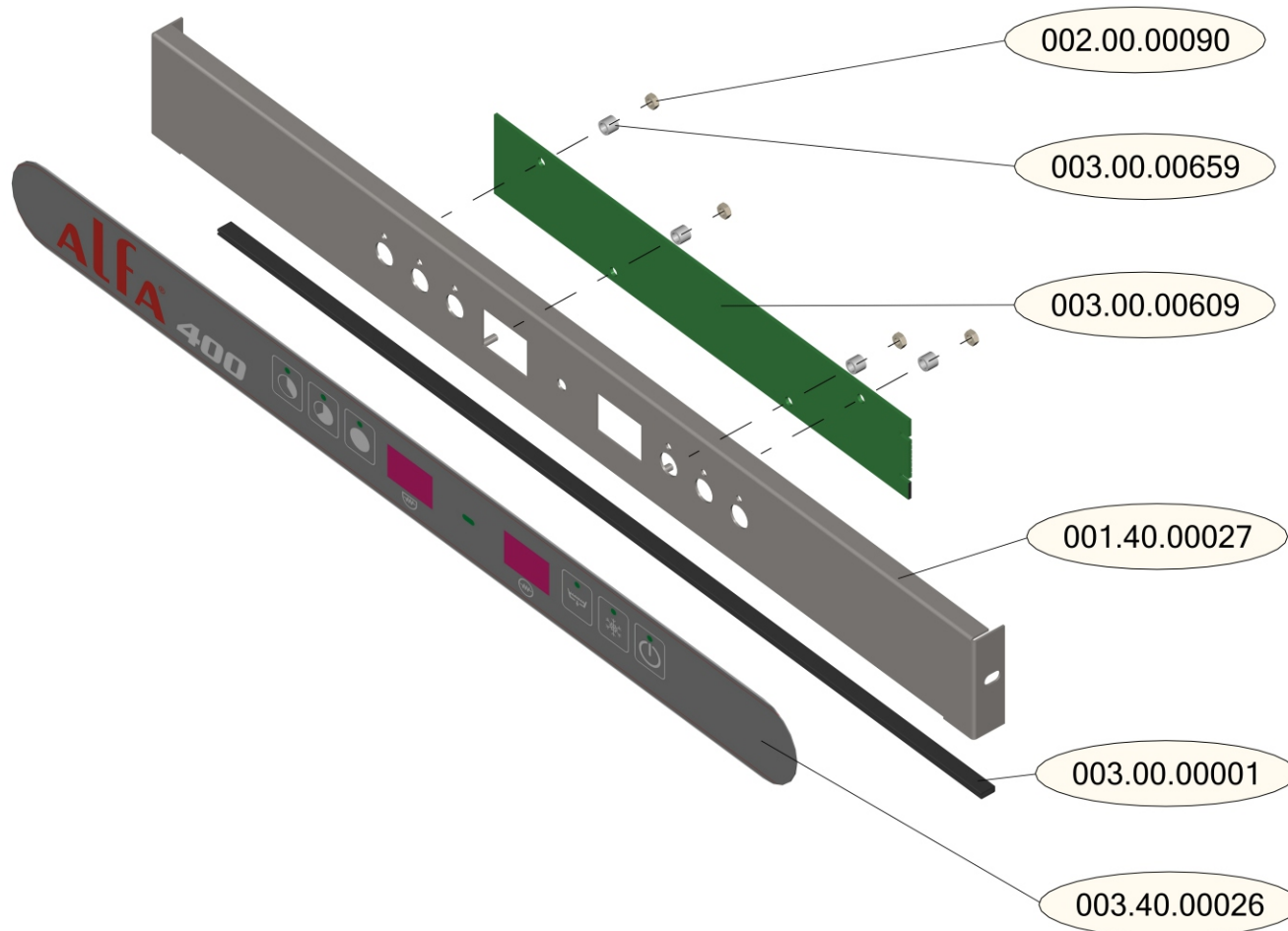


**MODEL : A400**

DESCRIPTION : CONTROL PANEL COMPLETE A400

ITEM CODE : 003.40.00023

PART ID	DESCRIPTION	QTY
002.00.00090	NUT M3 GALVANISED	4
003.00.00659	PCU SPACER 3.4x6x5	4
003.00.00609	USER INTERFACE 7 SEGM. DISPLAY VERSION	1
001.40.00027	PANEL SWITCH INOX EU40	1
003.00.00001	RUBBER INSERT TYPE U	1
003.00.00026	FILM - A400 LCD	1

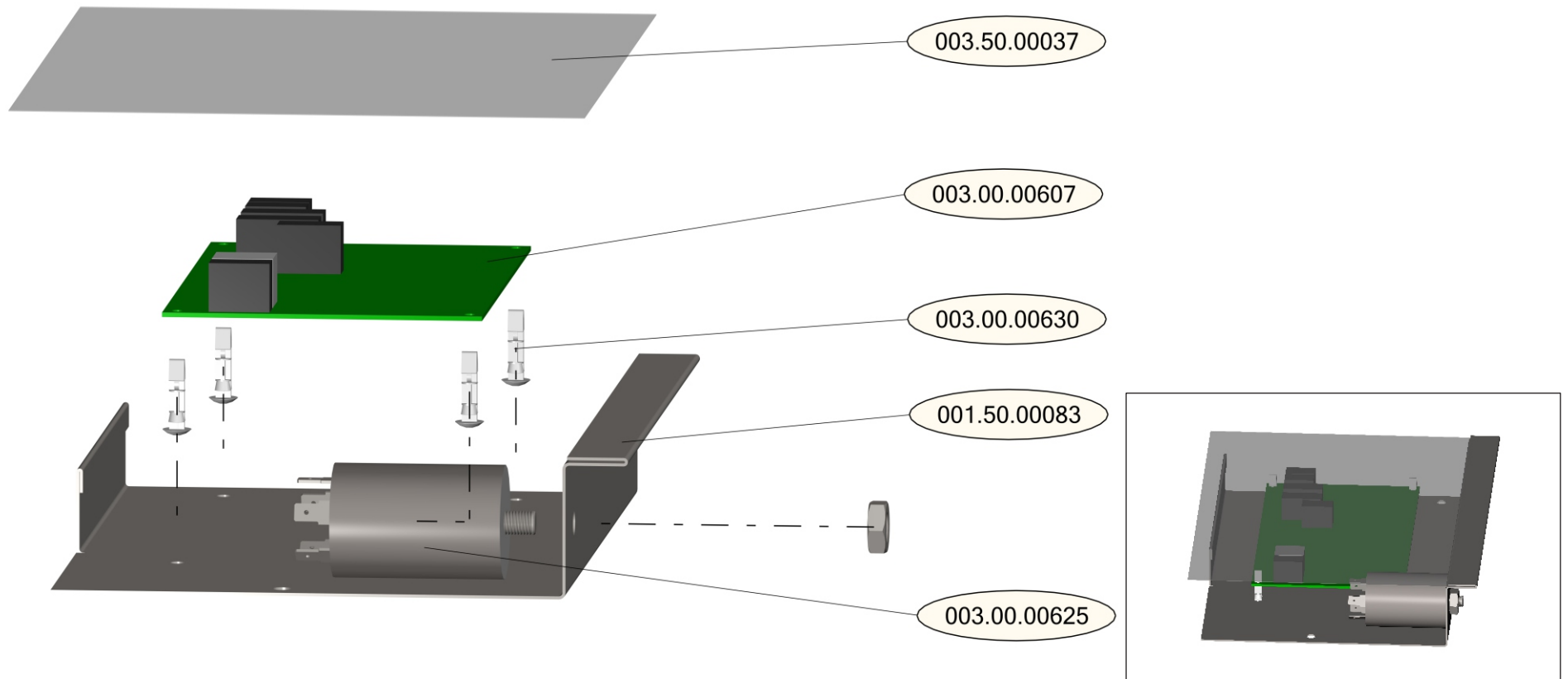


**MODEL : A400**

DESCRIPTION : BOARD PANEL COMPLETE A400

ITEM CODE : 003.40.00028

PART ID	DESCRIPTION	QTY
003.00.00607	NUT M3 GALVANISED	1
003.00.00625	ELECTROMAGNETIC FILTER 250V/50/60Hz 10A 40°C	1
003.00.00630	SPACER PLASTIC PCB RC-14	4
001.50.00083	BOARD BASE INOX	1
003.40.00027	WIRING SET A400 - ARIANE (NOT VISIBLE IN EXPLODED)	1

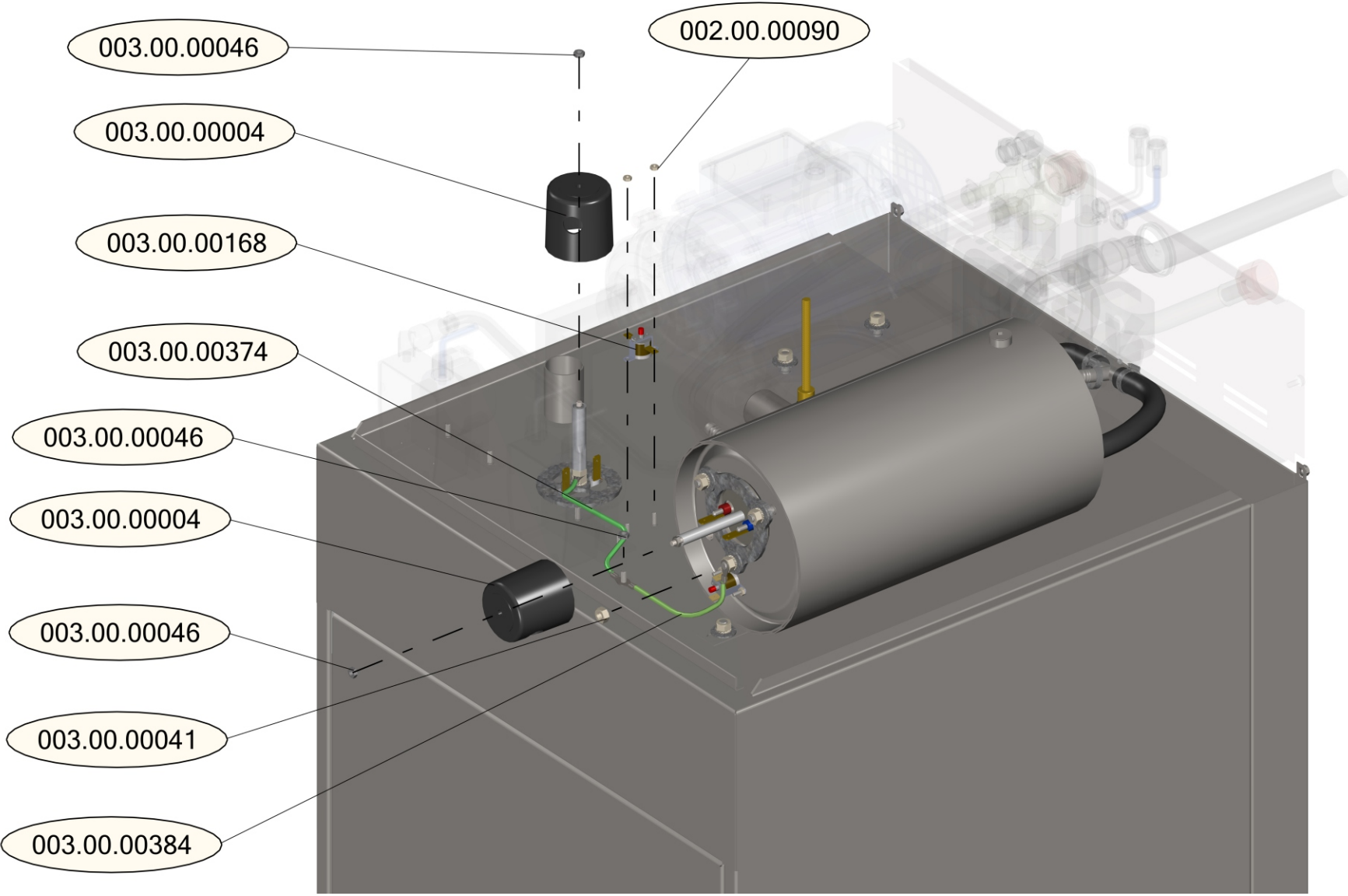


**MODEL : A400**

DESCRIPTION : ELECTRICAL EQUIPMENT - BOTTOM

ITEM CODE : -

PART ID	DESCRIPTION	QTY
003.00.00168	THERMOFUSE-TANK 90°C	1
002.00.00090	NUT M3 GALVANISED	2
003.00.00384	CABLE GR1 2,5x120mm (D6-D4) YELLOW/GREEN	1
003.00.00041	NUT M6 GALVANISED	1
003.00.00046	NUT M4 GALVANISED	3
003.00.00004	HEATER ELEMENT COVER	2
003.00.00374	CABLE GR2 2.5x170mm(D6-D4) YELLOW GREEN	1



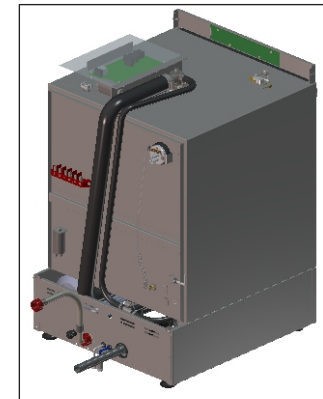
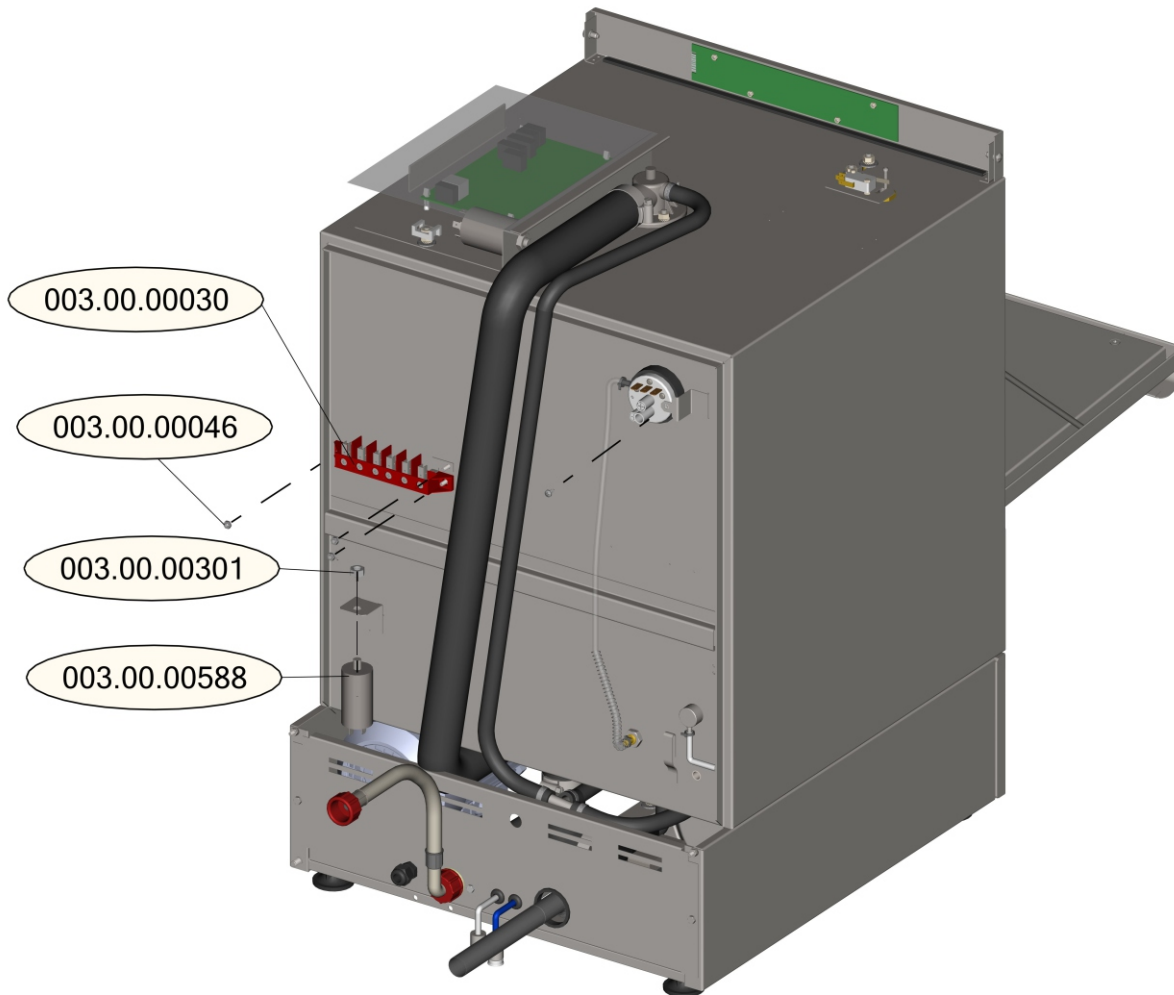


**MODEL : A400**

DESCRIPTION : ELECTRICAL EQUIPMENT - BACK

ITEM CODE : -

PART ID	DESCRIPTION	QTY
003.00.00030	POWER SUPPLY BOARD 6 Con	1
002.00.00046	NUT M4 GALVANISED	3
003.00.00301	NUT M8 GALVANISED	1
003.00.00588	CAPACITOR 5mf	1

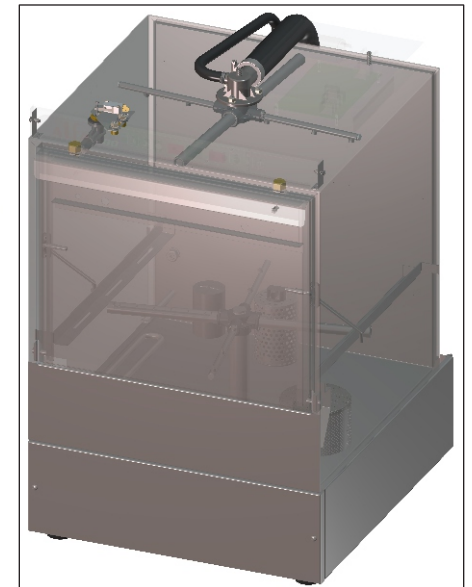
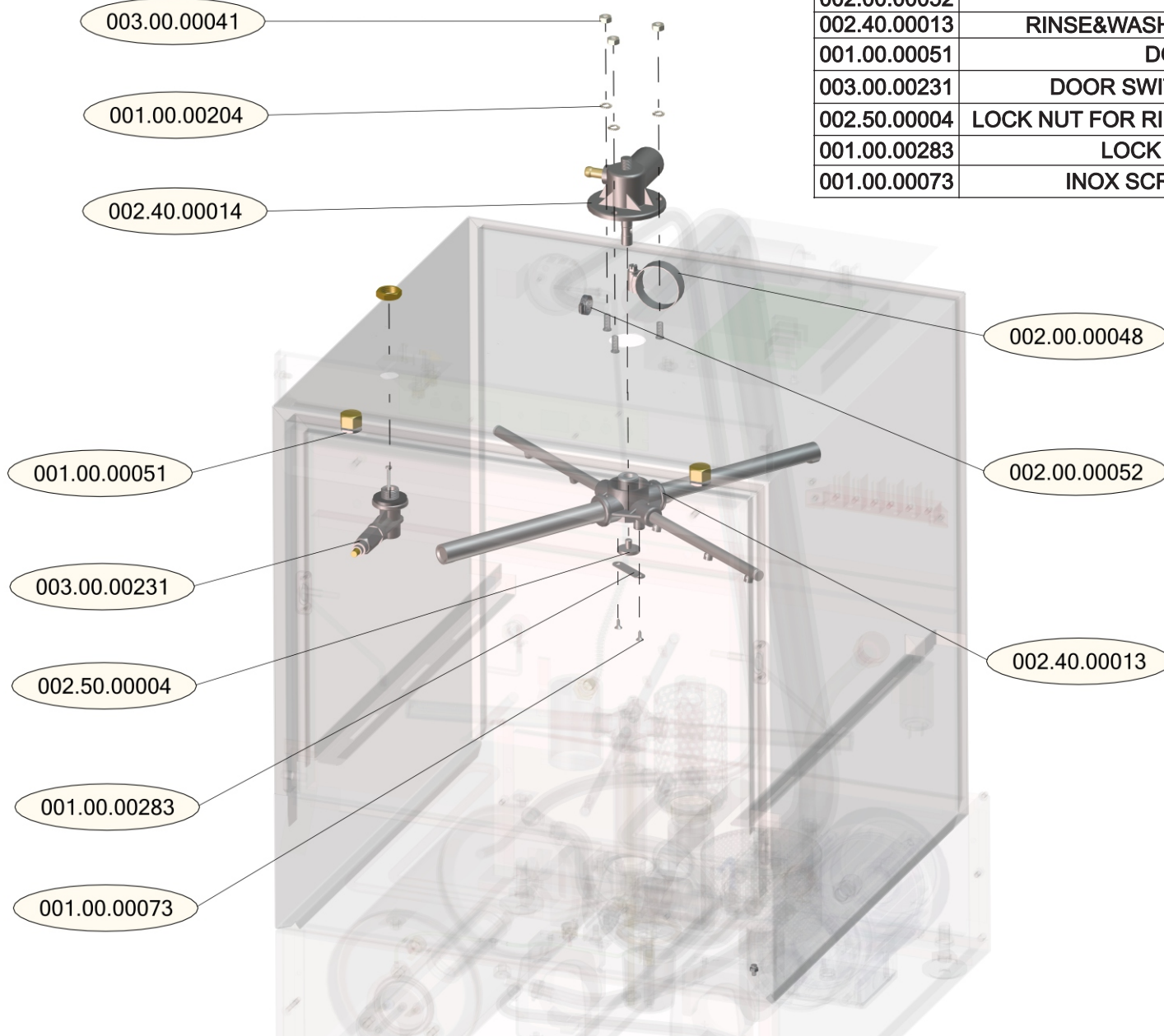


**MODEL : A400**

DESCRIPTION : MECHANICAL EQUIPMENT - TOP

ITEM CODE : -

PART ID	DESCRIPTION	QTY
003.00.00041	NUT M6 GALVANISED	3
001.00.00204	LOCK WASHER D6	3
002.40.00014	UPPER WASH AND RINSE BASE COMPLETE	1
002.00.00048	CLAMP 25-40	1
002.00.00052	CLAMP 10-16	1
002.40.00013	RINSE&WASH CROSS EU40 COMPLETE	1
001.00.00051	DOOR SNAP SET	2
003.00.00231	DOOR SWITCH MECHANICAL PART	1
002.50.00004	LOCK NUT FOR RINSE&WASH CROSS(OPTIONAL)	1
001.00.00283	LOCK NUT HOLDER INOX	1
001.00.00073	INOX SCREW 2.9x10(OPTIONAL)	2

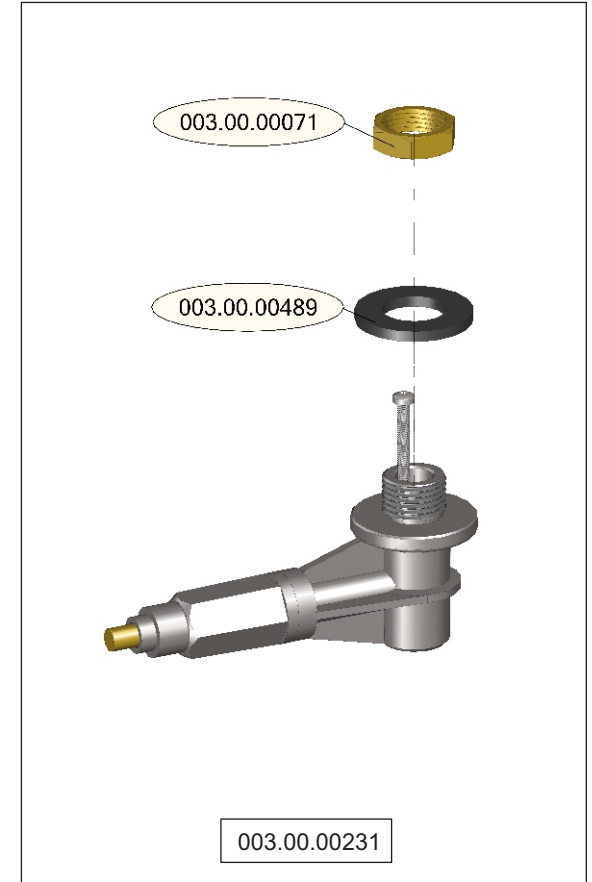
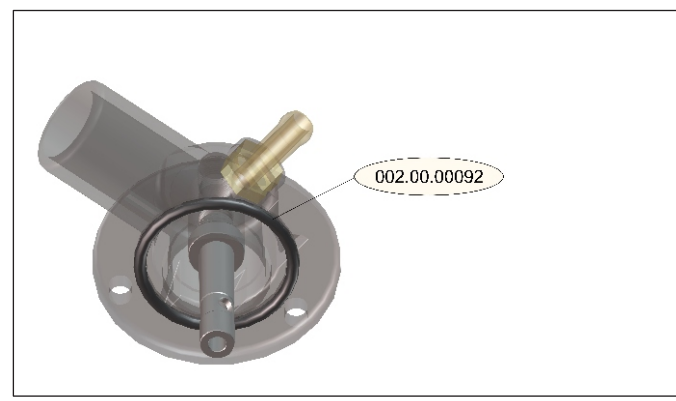
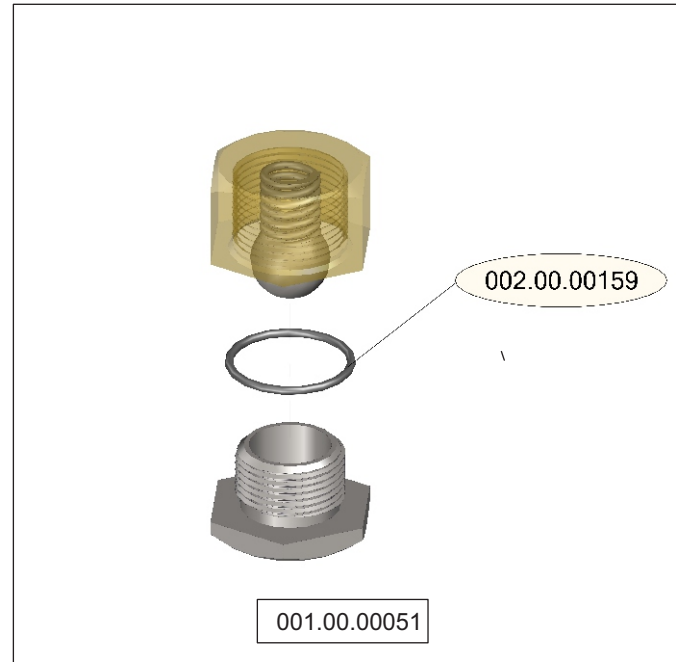
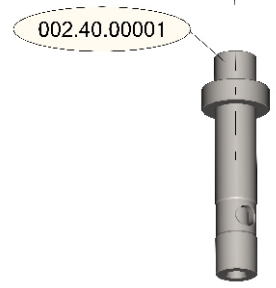
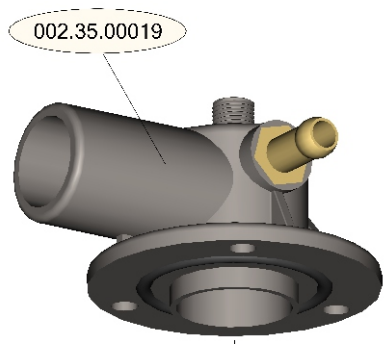
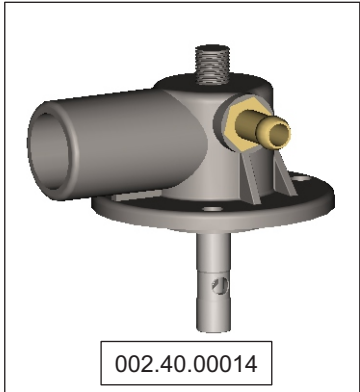


**MODEL : A400**

DESCRIPTION : MECHANICAL EQUIPMENT

ITEM CODE : -

PART ID	DESCRIPTION	QTY
002.00.00159	ORING 10x1.5	1
003.00.00071	NUT FOR DOOR SWITCH	1
003.00.00489	RUBBER GASKET 16x30x3	1
002.35.00019	WASHING RINSING BASE (WITH ORING)	1
002.40.0001	INOX AXLE D16-M10 UP	1
002.00.00092	ORING 40x3.5	1

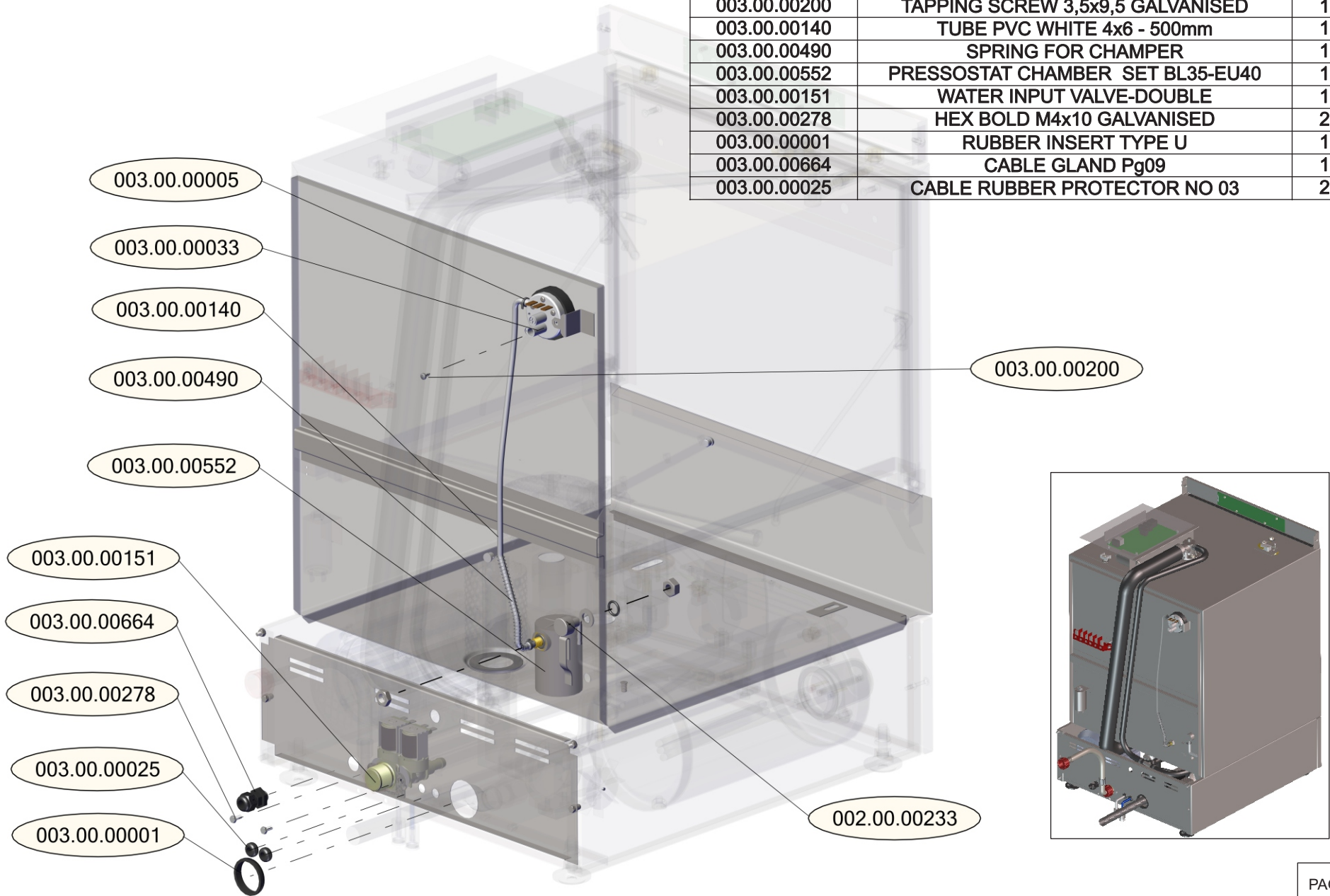


**MODEL : A400**

DESCRIPTION : MECHANICAL EQUIPMENT- BACK

ITEM CODE : -

PART ID	DESCRIPTION	QTY
002.00.00233	DETERGENT TANK INJEKTOR 4-6mm	1
003.00.00033	PRESSOSTAT SWITCH	1
003.00.00005	TIRE UP 98x2,5	2
003.00.00200	TAPPING SCREW 3,5x9,5 GALVANISED	1
003.00.00140	TUBE PVC WHITE 4x6 - 500mm	1
003.00.00490	SPRING FOR CHAMPER	1
003.00.00552	PRESSOSTAT CHAMBER SET BL35-EU40	1
003.00.00151	WATER INPUT VALVE-DOUBLE	1
003.00.00278	HEX BOLD M4x10 GALVANISED	2
003.00.00001	RUBBER INSERT TYPE U	1
003.00.00664	CABLE GLAND Pg09	1
003.00.00025	CABLE RUBBER PROTECTOR NO 03	2

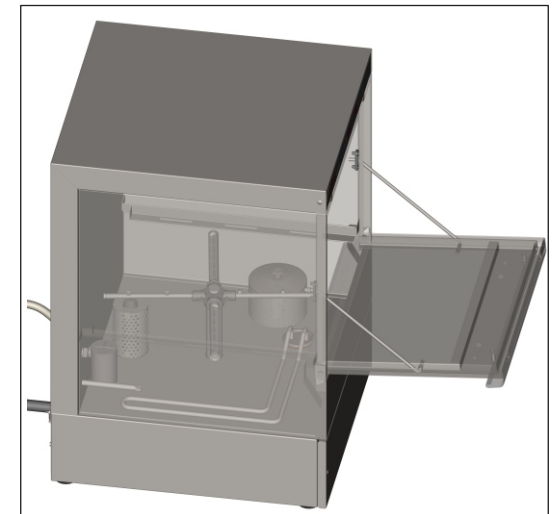
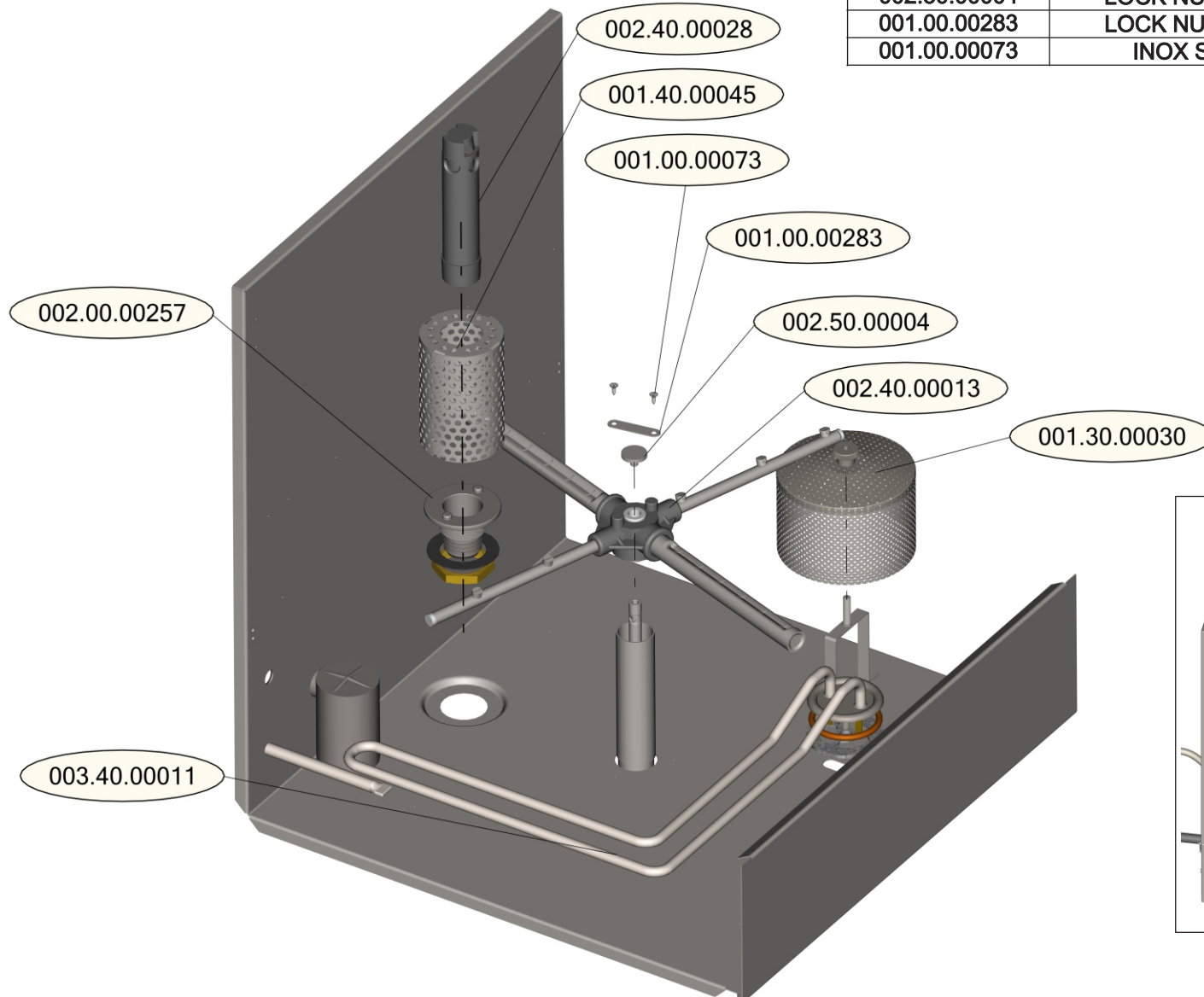


**MODEL : A400**

DESCRIPTION : MECHANICAL EQUIPMENT- IN

ITEM CODE : -

PART ID	DESCRIPTION	QTY
002.40.00028	DRAIN&OVERFLOW VALVE PLASTIC PART EU40 - DRAIN PUMP	1
001.00.00231	DRAIN PUMP FILTER EU40	1
002.00.00257	DRAIN&OVERFLOW VALVE PLASTIC BASE	1
003.40.00011	HEATER ELEMENT TANK 2.5Kw	1
001.30.00030	FILTER FOR PUMP IN THE TANK	1
002.40.00013	RINSE&WASH CROSS EU40 COMPLETE	1
002.50.00004	LOCK NUT FOR RINSE&WASH CROSS	1
001.00.00283	LOCK NUT HOLDER INOX (OPTIONAL)	1
001.00.00073	INOX SCREW 2.9x10 (OPTIONAL)	2

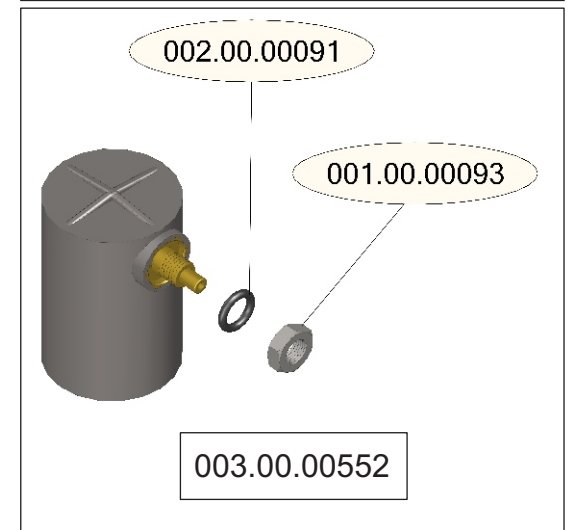
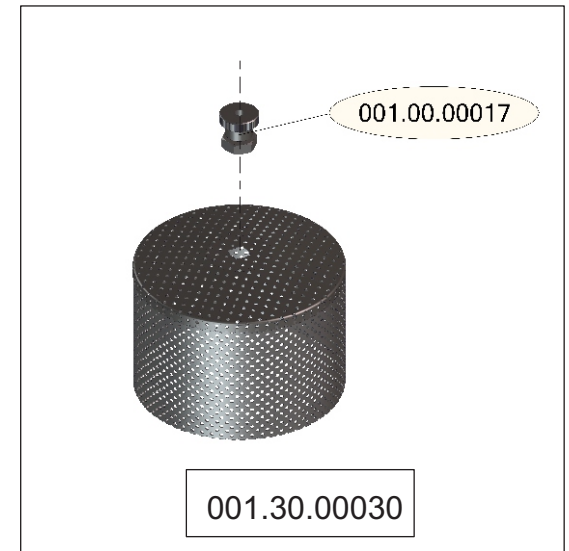
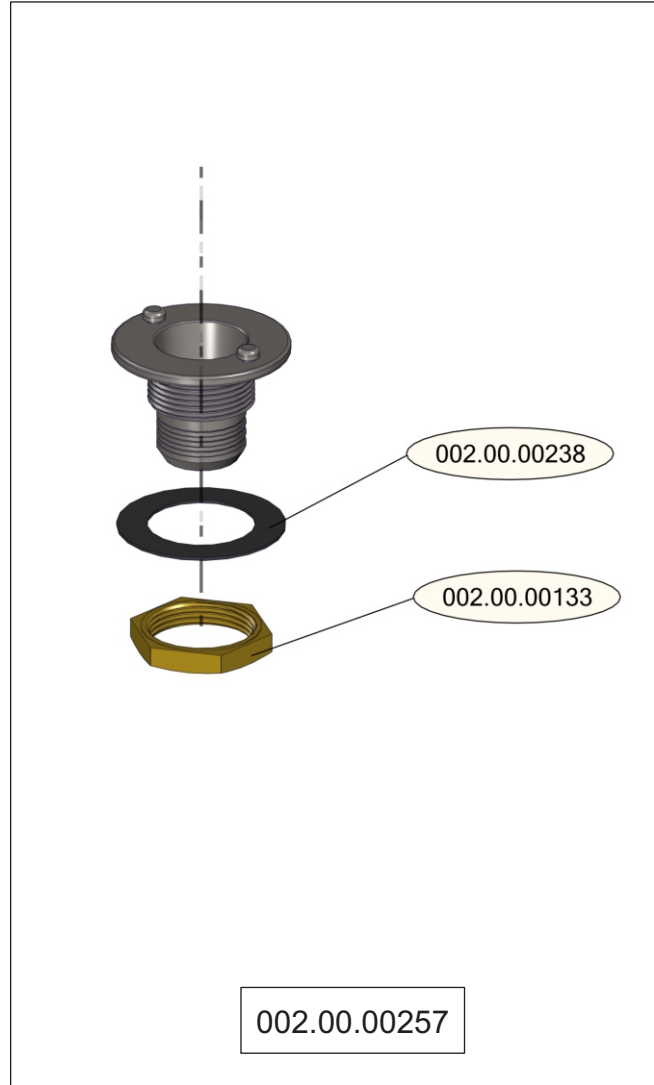
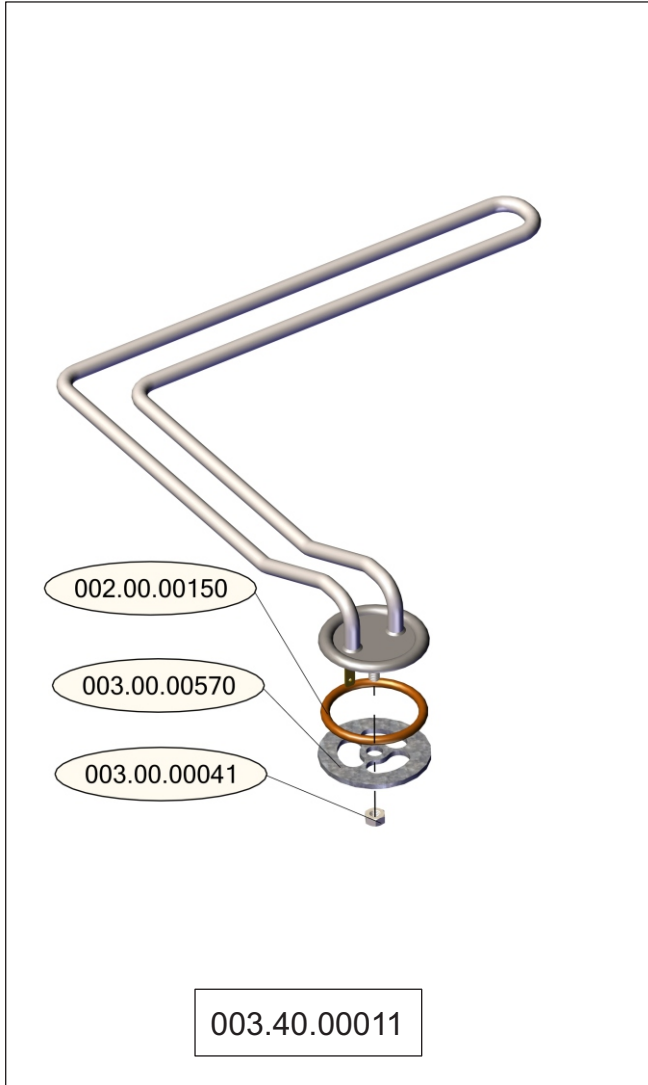


**MODEL : A400**

DESCRIPTION : MECHANICAL EQUIPMENT

ITEM CODE : -

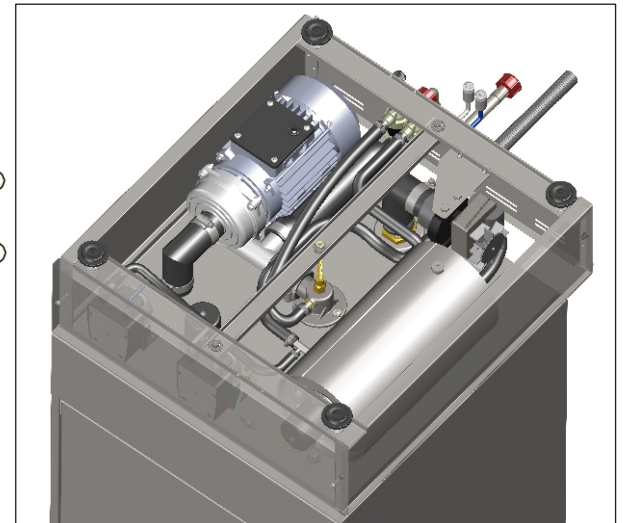
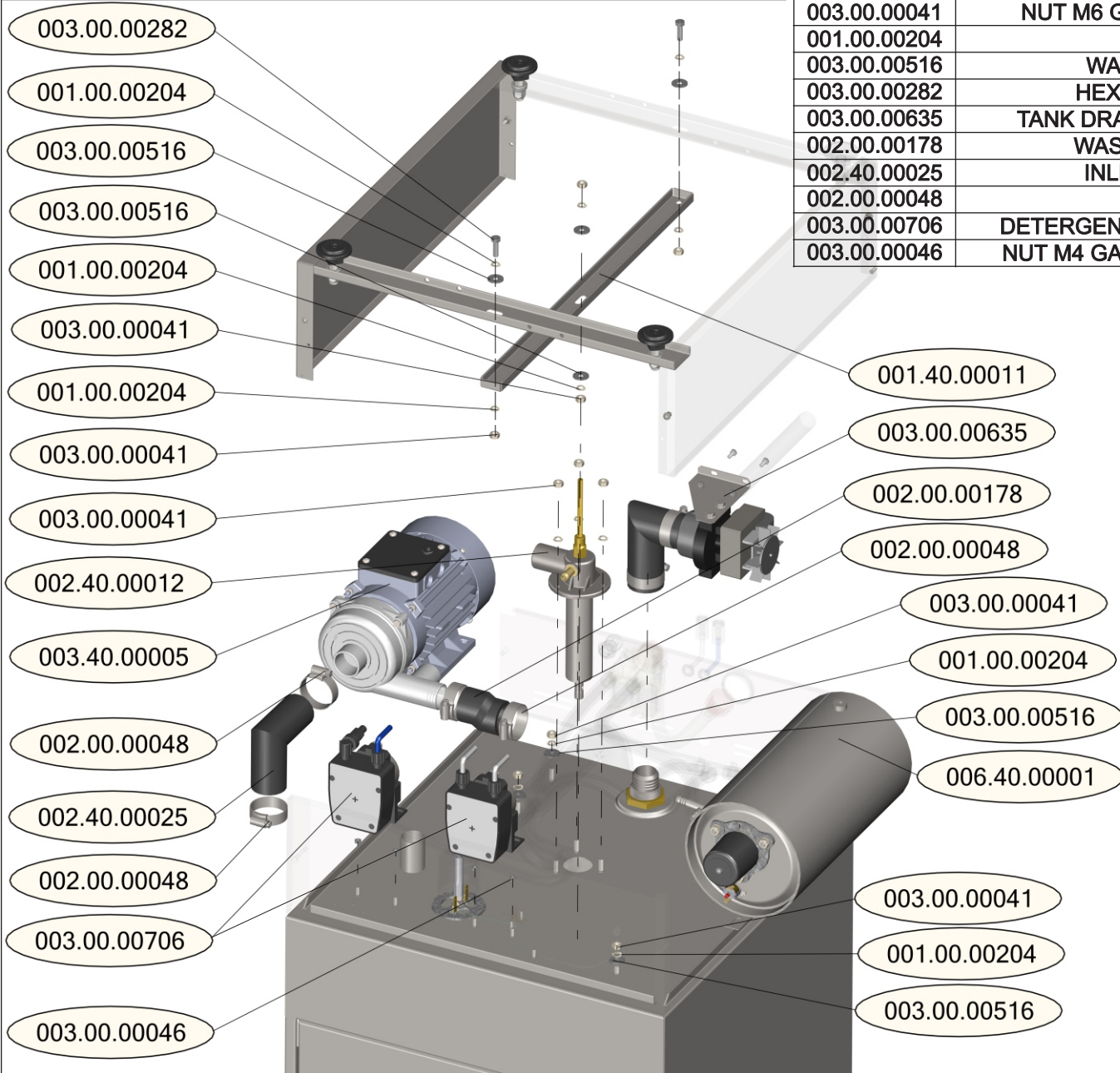
PART ID	DESCRIPTION	QTY
002.00.00238	RUBBER GASKET 36x55x1	1
002.00.00133	BRONZE NUT M36	1
002.00.00091	ORING 3x10.5	1
001.00.00093	NUT M10 INOX - HALF	1
001.00.00017	FILTER RETAINING NUT SET	1
002.00.00150	ORING 45x6	1
003.00.00570	TANK HEATING ELEMENT RETAINING BRACKET	1
003.00.00041	NUT M6 GALVANISED	1



**MODEL : A400**

DESCRIPTION : MECHANICAL EQUIPMENT- BOTTOM

PART ID	DESCRIPTION	QTY
006.40.00001	BOILER EU40 COMPLETE - 230V	1
003.00.00060	PUMP EU40	1
001.40.00011	INOX STIFFENING PART EU40	1
002.40.00012	LOWER WASH AND RINSE BASE COMPLETE	1
003.00.00041	NUT M6 GALVANISED (BOILER SUPPORT)	11
001.00.00204	LOCK WASHER D6	13
003.00.00516	WASHER D6x18 GALVANISED	8
003.00.00282	HEX BOLD M6X20 GALVANISED	2
003.00.00635	TANK DRAINING PUMP KIT FOR MODEL 40	1
002.00.00178	WASH PUMP HOSE (OUTPUT) Z	1
002.40.00025	INLET HOSE FOR PUMP EU40	1
002.00.00048	CLAMP 25-40	4
003.00.00706	DETERGENT AND RINSE AID PUMP KIT - A400	1
003.00.00046	NUT M4 GALVANISED (FOR DT-RP SUPPORT)	4

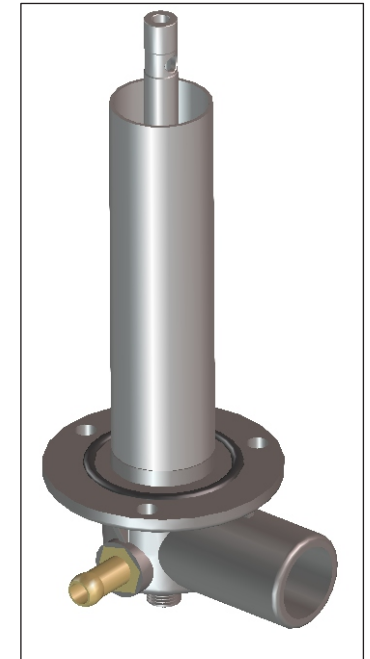
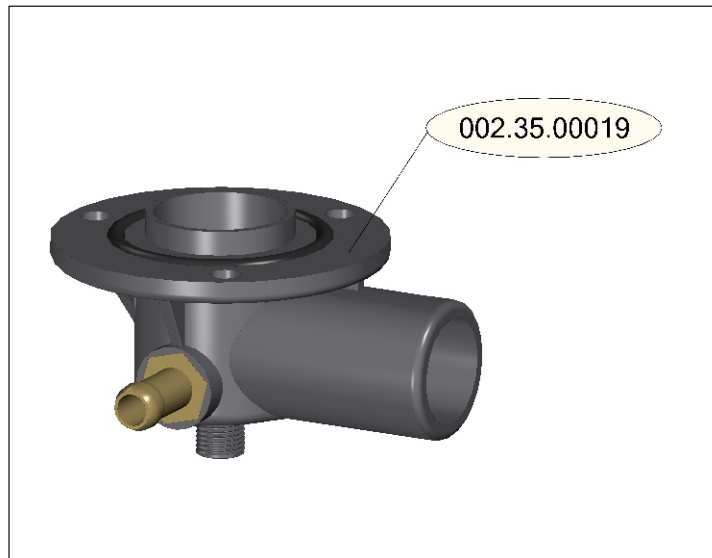
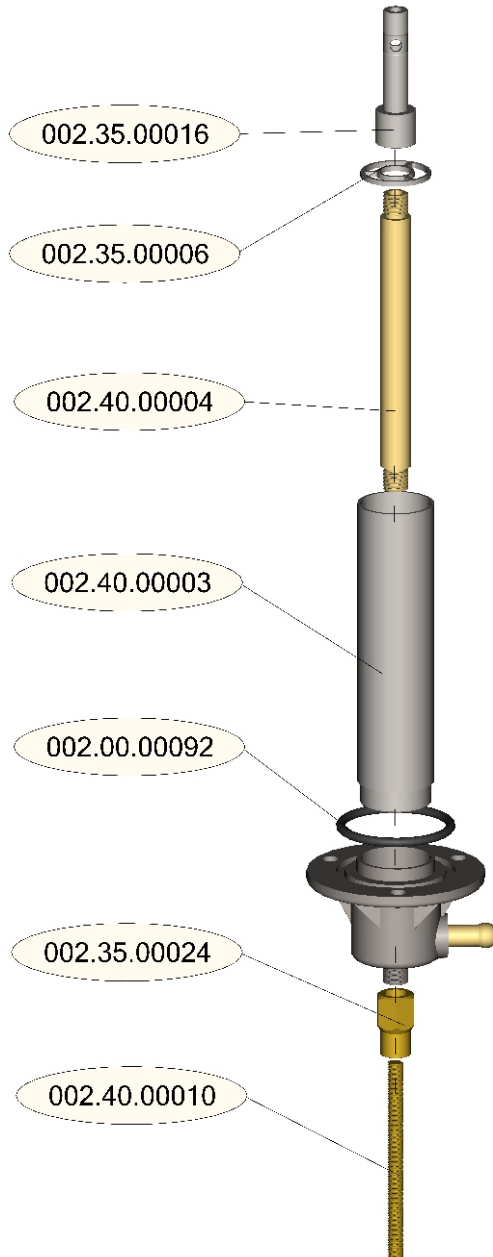


**MODEL : A400**

DESCRIPTION : LOWER WASH & RINSE BASE COMPLETE

ITEM CODE : 002.40.00012

PART ID	DESCRIPTION	QTY
002.35.00016	INOX AXLE D16 M6 BL35-EU40	1
002.35.00006	SPACER FLANGE INOX FOR BASE 35-40	1
002.40.00004	BRASS AXLE D12x121.5 M10	1
002.40.00003	WASH PIPE D30 INOX EU40	1
002.00.00092	ORING 40x3.5	1
002.35.00024	BRASS SPACER 14x25, M6-M10	1
002.40.00010	THREADED ROD M6X80	1
002.35.00019	PLASTIC BASE WITH ORING	1



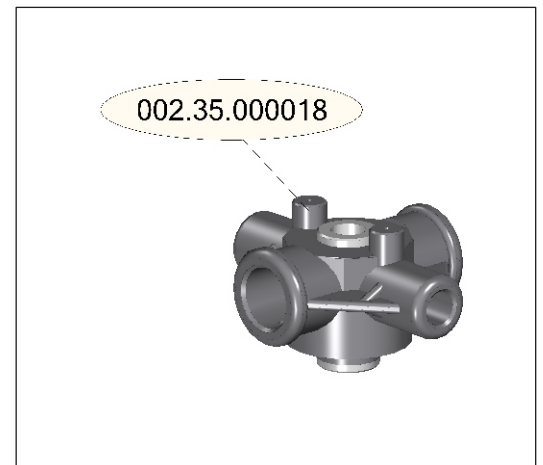
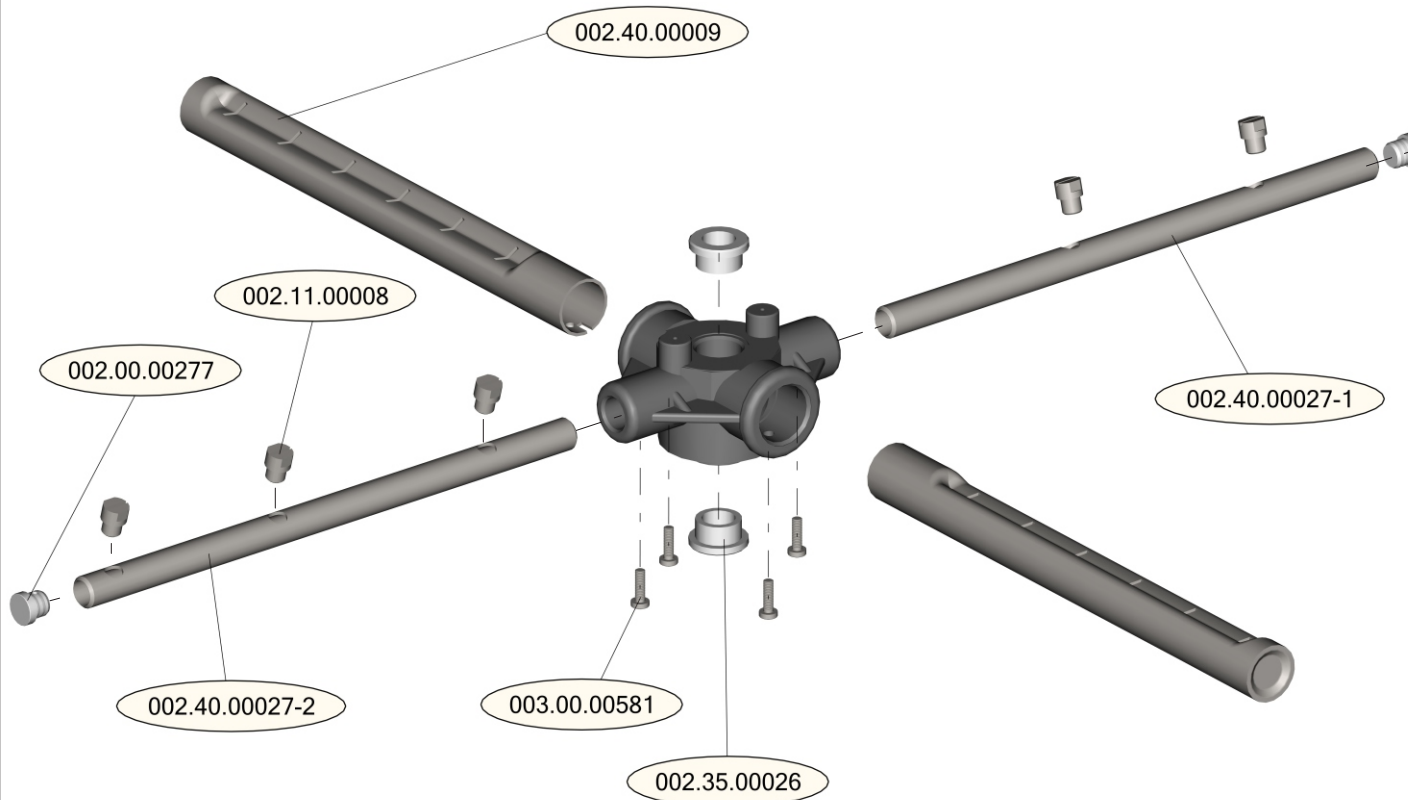


**MODEL : A400**

DESCRIPTION : LOWER WASH&amp;RINSE BASE COMPLETE

ITEM CODE : 002.40.00013

PART ID	DESCRIPTION	QTY
002.35.00026	TEFLON D18x10	2
002.11.00008	SPRAYER FOR RINSING ARM	5
002.00.00277	PLASTIC CAP FOR RINSE ARM	2
002.40.00027-1	PIPE D10x84 2 HOLES RINSE	1
002.40.00027-2	PIPE D10x184 3 HOLES RINSE	1
002.40.00009	WASH ARM EU40 INOX D18X1x182	2
003.00.00581	SCREW M3x10 INOX	4
002.35.00018	RINSING-WASHING GROUP CROSS BL-EU	1

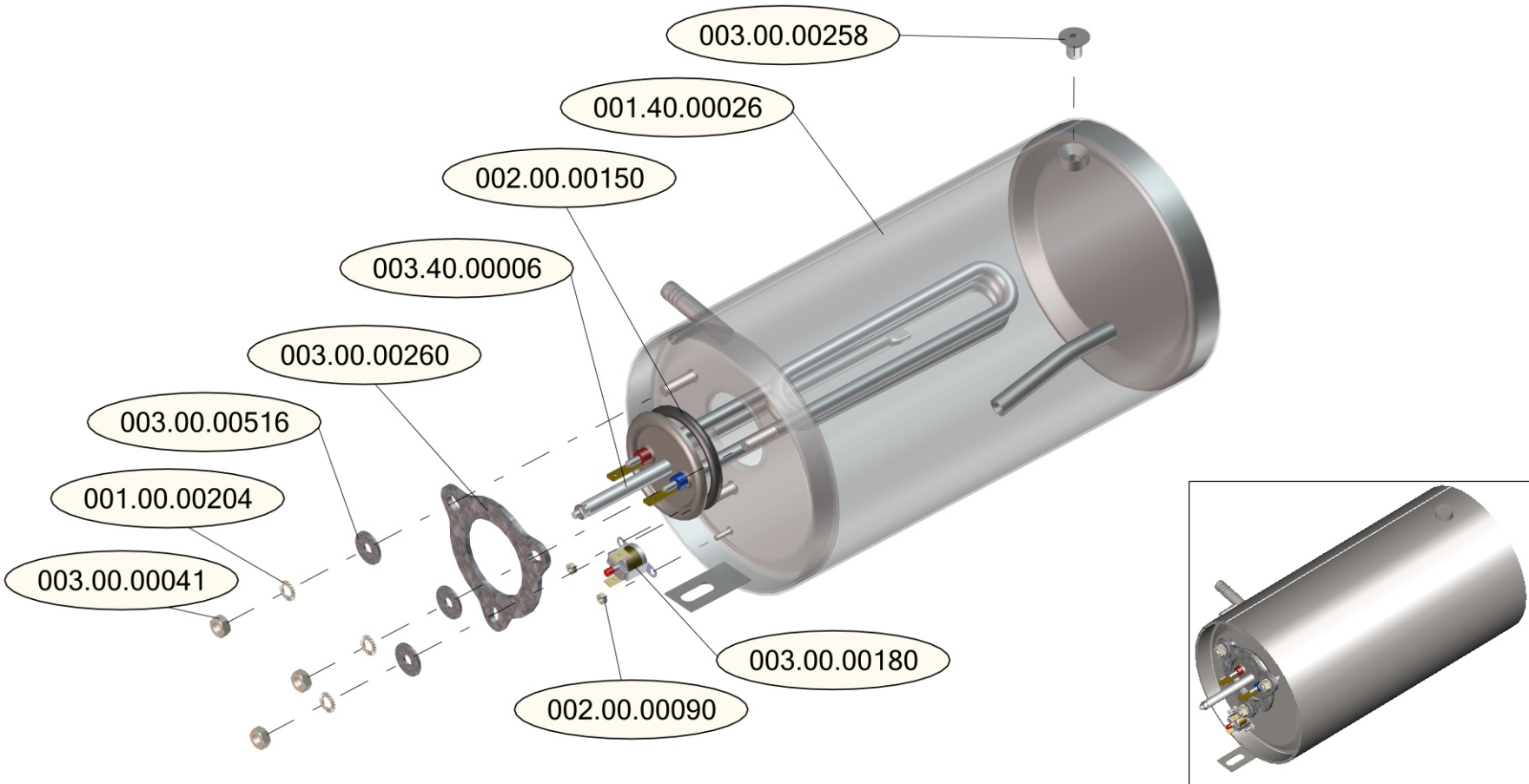


**MODEL : A400**

DESCRIPTION : BOILER WITH HEATING ELEMENT

ITEM CODE : 006.40.00001

PART ID	DESCRIPTION	QTY
001.40.00026	BOILER FOR BARLINE 35 - STEEL	1
003.00.00258	SCREW M8x12 ALLEN INOX	1
003.40.00006	HEATING ELEMENT BOILER EU40	1
002.00.00150	O RING 45X6	1
003.00.00260	BOIL.ELEMENT FITTING BASE	1
003.00.00516	WASHER D6x18 GALVANISED	3
001.00.00204	LOCK WASHER D6	3
003.00.00041	NUT M6 GALVANISED	3
003.00.00180	THERMOFUSE BOILER 105°C	1
002.00.00090	NUT M3 GALVANISED	2

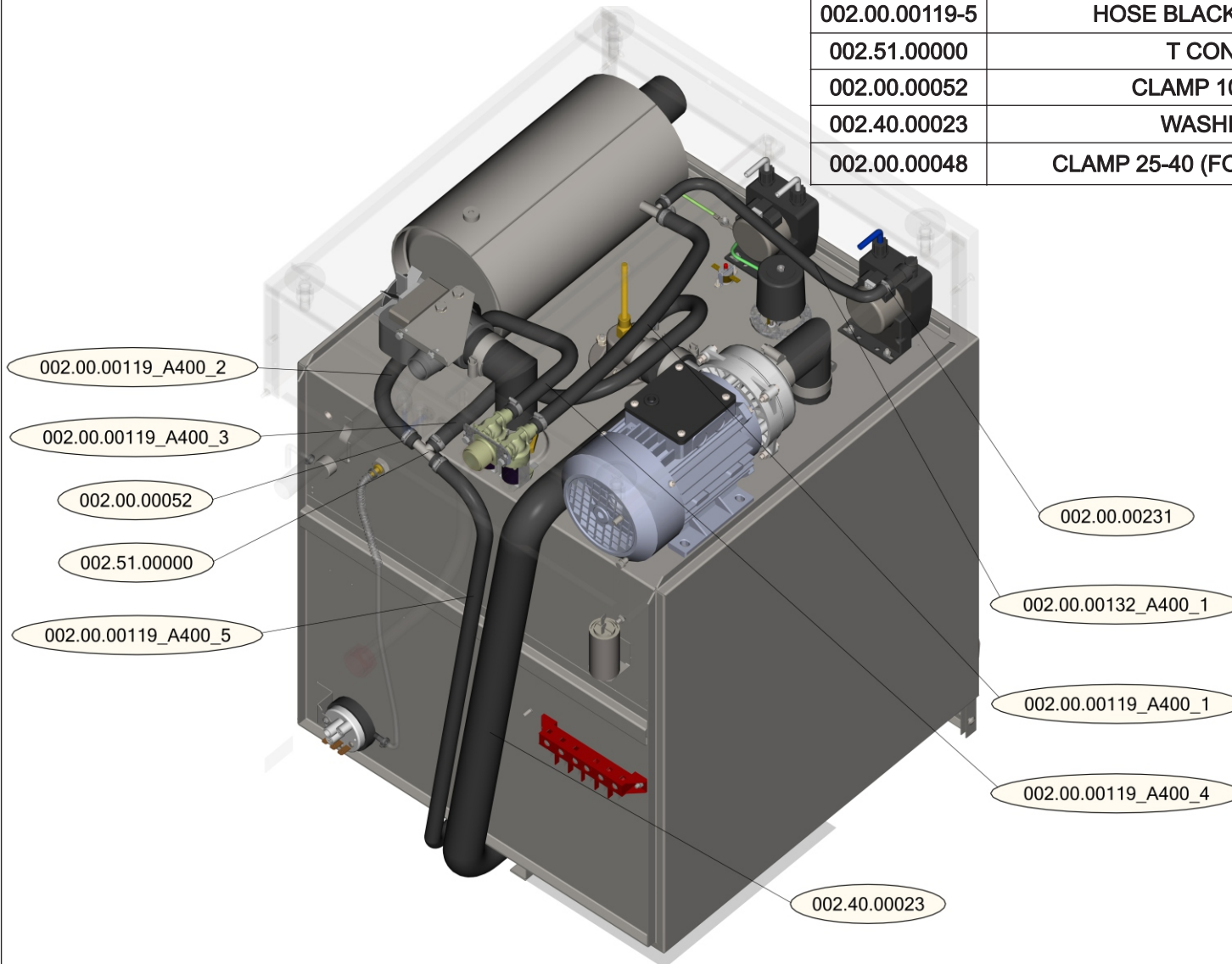


**MODEL : A400**

DESCRIPTION : MECHANICAL EQUIPMENT - HOSES A400

ITEM CODE : -

PART ID	DESCRIPTION	QTY
002.00.00132-1	HOSE BLACK (1/4)6x12 , L : 360mm	1
002.00.00231	CLAMP 8-12 (FOR HOSE 1/4)	2
002.00.00119-1	HOSE BLACK (3/8)10x16.5, L : 380 mm	1
002.00.00119-2	HOSE BLACK (3/8)10x16.5, L : 120 mm	1
002.00.00119-3	HOSE BLACK (3/8)10x16.5, L : 380mm	1
002.00.00199-4	HOSE BLACK (3/8)10x16.6, L : 290mm	1
002.00.00119-5	HOSE BLACK (3/8)10x16.6, L : 880mm	1
002.51.00000	T CONNECTOR D10x70	1
002.00.00052	CLAMP 10-16 (FOR HOSE 3/8)	10
002.40.00023	WASHING PIPE OUTLET	1
002.00.00048	CLAMP 25-40 (FOR WASHING PIPE OUTLET)	2

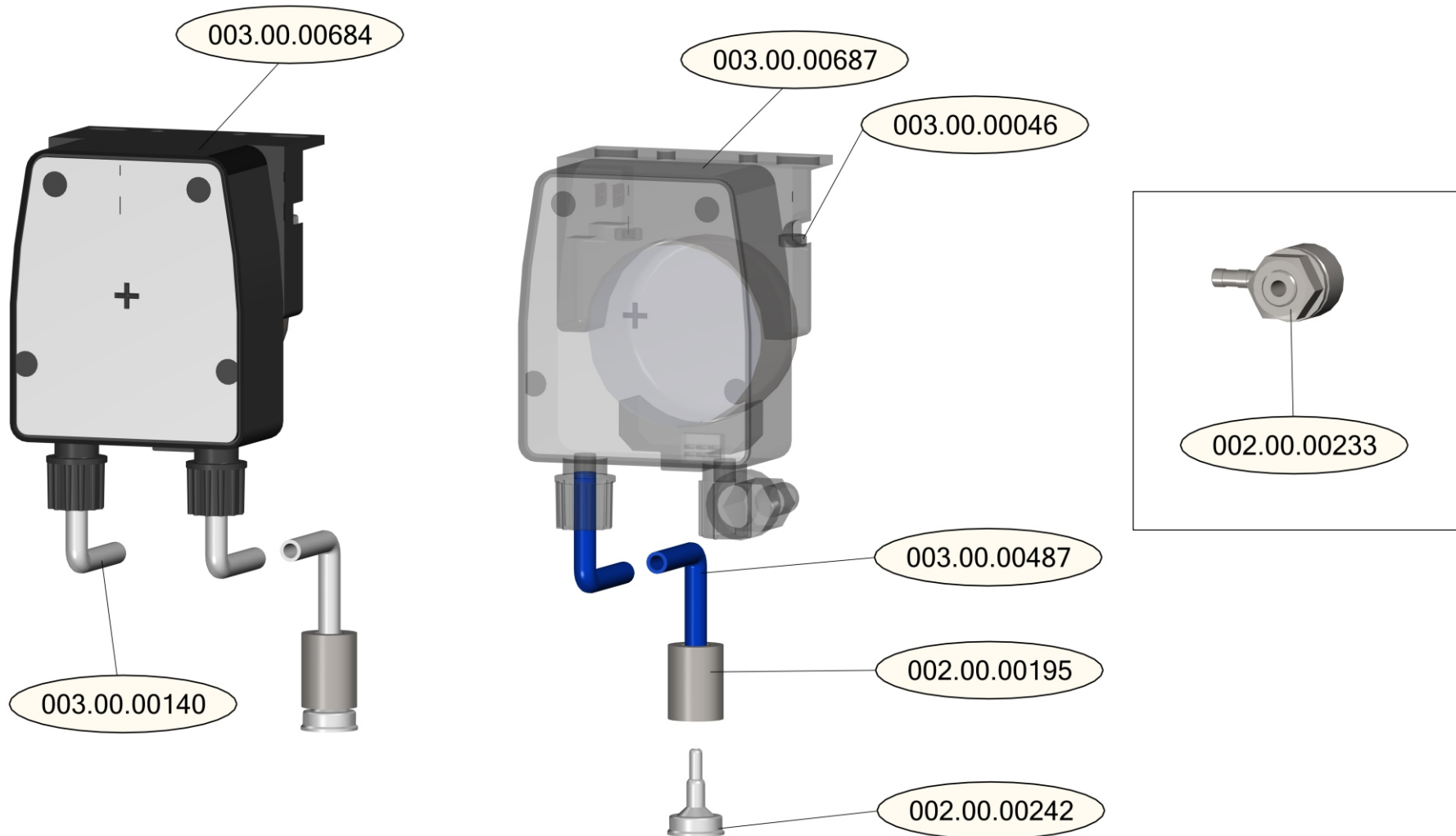


**MODEL : A400**

DESCRIPTION : DETERG. - RINSE AID PUMP KIT MODEL 400

ITEM CODE : 003.00.00706

PART ID	DESCRIPTION	QTY
002.00.00195	BALANCE F15x20	2
002.00.00233	DETERGENT TANK INJEKTOR 4-6mm	1
002.00.00242	FILTER PLASTIC FOR RINSE AID VALVE	2
003.00.00046	NUT M4 GALVANISED	4
003.00.00140	TUBO TRANSPARENT 4x6	1.8m
003.00.00140	TUBO TRANSPARENT 4x6	0.8m
003.00.00487	TUBO BLUE 4x6	1.8m
003.00.00684	DETERGENT PUMP FIXED FLOW - PERISTALTIC	1
003.00.00687	RINSE AID PUMP FIXED FLOW - PERISTALTIC	1

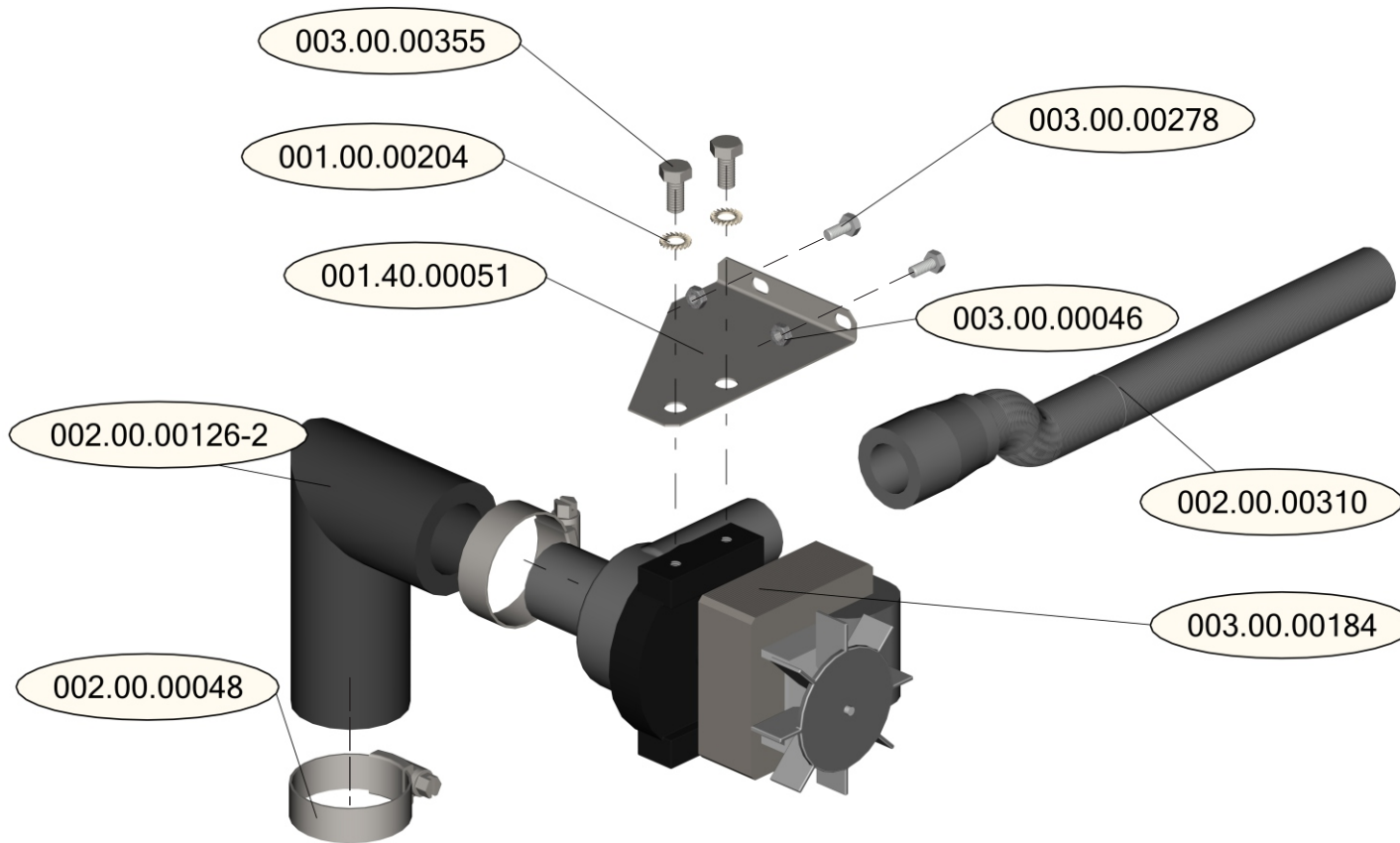


**MODEL : A400**

DESCRIPTION : DRAIN PUMP KIT MOD40

ITEM CODE : 003.00.00635

PART ID	DESCRIPTION	QTY
003.00.00355	HEX BOLT M6x12 GALVANISED	2
001.00.00204	LOCK WASHER D6	2
001.40.00051	INOX BASE FOR DRAINING PUMP MOD40	1
003.00.00184	TANK DRAINING PUMP 230V - 65W	1
002.00.00126	WASH PUMP HOSE (INPUT)	1
002.00.00048	CLAMP 25-40	2
002.00.00310	STRAIGHT DRAINING PIPE OD22-ID19-1.5m	1
003.00.00278	HEX BOLT M4x10 GALVANISED	
003.00.00046	NUT M4 GALVANISED	2
002.40.00028	DRAIN&OVERFLOW VALVE PLASTIC PART EU40 - DRAIN PUMP - KIT	1
001.40.00045	DRAIN PUMP FILTER EU40 - KIT	1



**MODEL : A400**

DESCRIPTION : EQUIPMENT

ITEM CODE : -

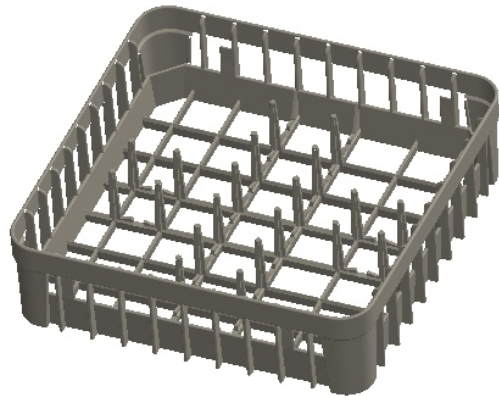
PART ID	DESCRIPTION	QTY
001.00.00016	FOOT SMALL M10	4
002.00.00109	INLET HOSE 1500mm - MOD40	1
003.00.00445	PLASTIC BASKET 400x400x130	1
003.00.00557	PLASTIC BASKET 400x400 FOR PLATES	1
003.00.00439	PLASTIC CUTLERY QUADRATO	1
003.00.00307	POWER SUPPLY CABLE 3x2.5 -2.3m	1



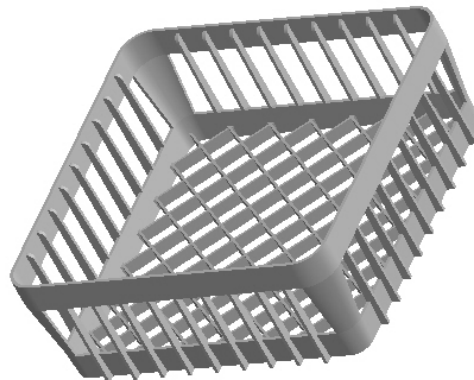
002.00.00109



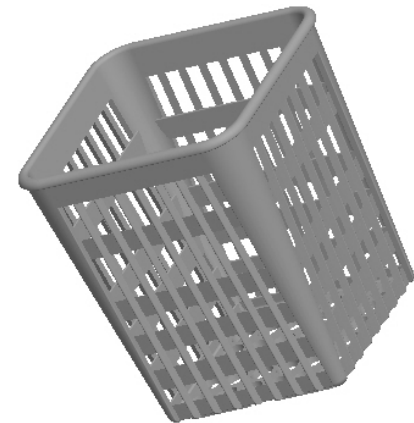
003.00.00307



003.00.00557



003.00.00445



003.00.00439