

Drawing

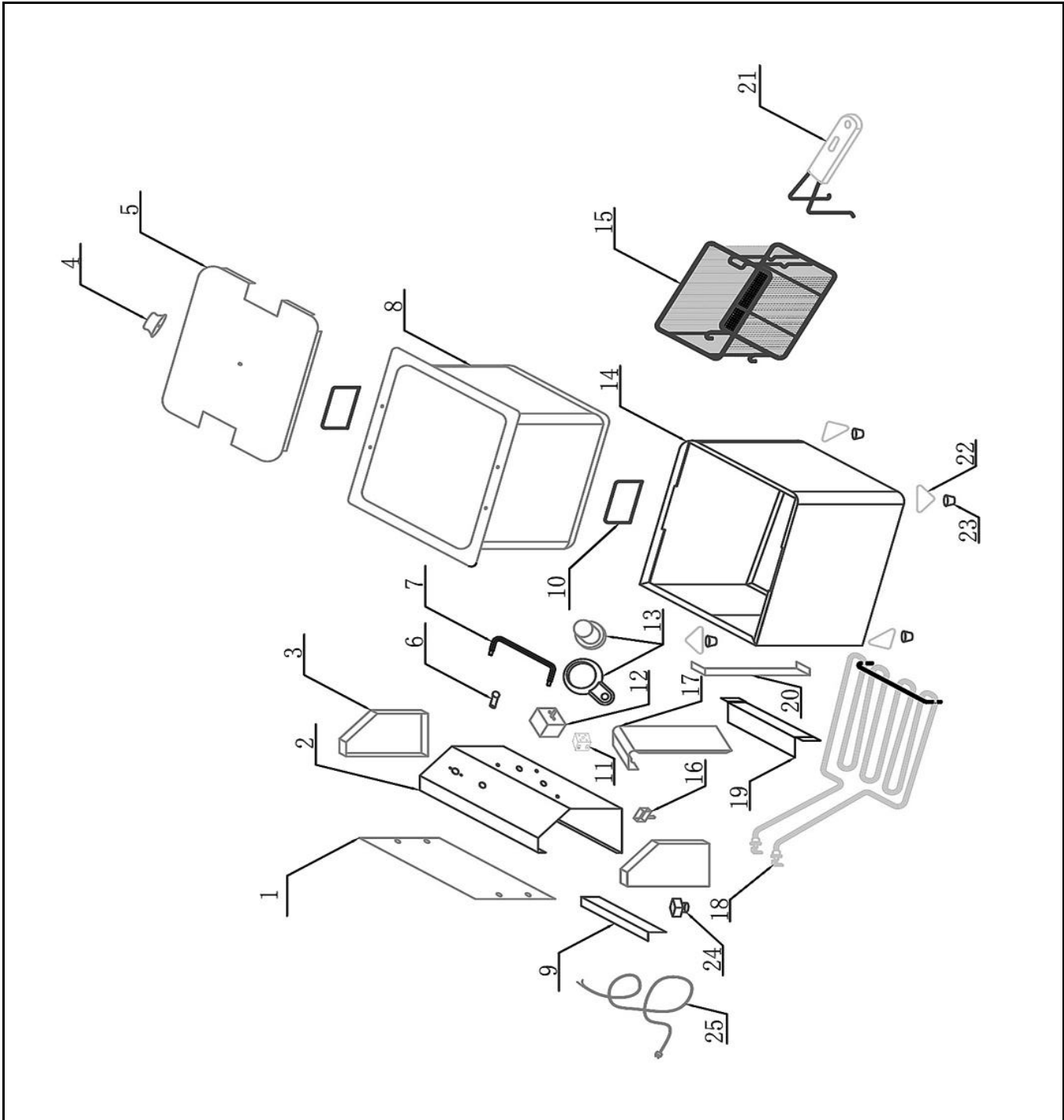


Hendi B.V.
Steenoven 21
3911 TX Rhenen
The Netherlands


Batch #	Appliance part#
300669-000001 and up	205822

Description
Deep fryer 8L bleu line

Date	24-05-2016	Revision #	Revision version
Revision	First bill of materials (BOM)		



Bill of materials (BOM)

 <p>Hendi B.V. Steenoven 21 3911 TX Rhenen The Netherlands</p>	Batch #	Appliance part#
	300669-000001 and up	205822
	Description	
	Deep fryer 8L bleu line	


Date	24-05-2016	Revision #	Revision version
Revision	First bill of materials (BOM)		

Item	Description	Part#	Quantity	Remark	Picture
1	Back cover	n/a	1		
2	Front cover	n/a	1		
3	Side cover	n/a	1		
4	Knob for lid	940402	1		
5	Lid	n/a	1		
6	Indicator light	930533	1		
7	Bracket	n/a	1		
8	Fryer bassin	n/a	1		
9	Bracket	n/a	1		
10	Handle	n/a	2		
11	Terminal	930540	1		
12	Thermostat	930557	1		
13	Knob	930564	1		
14	Frame	n/a	1		
15	Fryer basket	930656	1	Incl item 21	
16	Microswitch	930571	1		
17	Bracket	n/a	1		
18	Element	930649	1		
19	Support	n/a	1		
20	Bracket	n/a	1		
21	Handle fryer basket	nss	1	Available as 930656	
22	Support plate	n/a	4		
23	Feet	930588	4		
24	Hi-limiter	930595	1		
25	Power cord	205303	1		
*	Probe holder	930663	2	(Not shown on exploded view)	

n/a -> not available

nss -> not sold separately

Circuit diagram

 <p>HENDI FOOD SERVICE EQUIPMENT</p> <p>Hendi B.V. Steenoven 21 3911 TX Rhenen The Netherlands</p>	Batch #	Appliance part#
	300669-000001 and up	205822
	Description	
	Deep fryer 8L bleu line	

Date	24-05-2016	Revision #	Revision version
Revision	First bill of materials (BOM)		

