
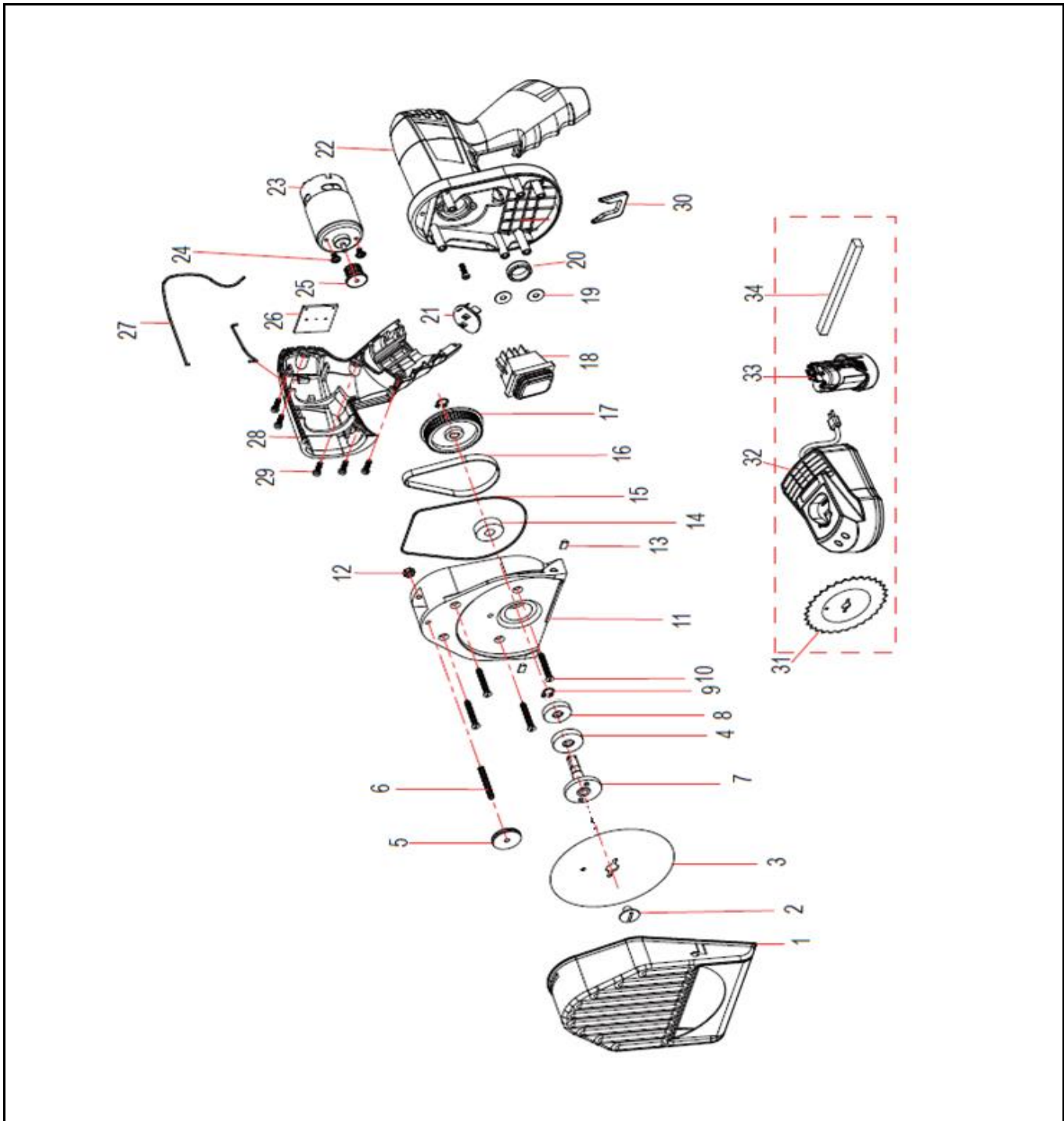



Drawing

 <p>Hendi B.V. Steenoven 21 3911 TX Rhenen The Netherlands</p>	Batch #	Appliance part#
	0000000	267257
	Description	
	Cordless kebab knife electric	

Date	02-03-2016	Revision #	Revision version
Revision	First bill of materials (BOM)		



Bill of materials (BOM)

 Hendi B.V. Steenoven 21 3911 TX Rhenen The Netherlands	Batch #	Appliance part#
	0000000	267257
	Description	
Cordless kebab knife electric		


Date	02-03-2016	Revision #	Revision version
Revision	First bill of materials (BOM)		

Item	Description	Part#	Quantity	Remark	Picture
1	Guard knife	n/a	1		
2	Knife screw	932766	1		
3	Knife	267219	1		
4	Oil seal	936825			
5	Adjustment screw	n/a	1		
6	Bolt	n/a	1		
7	Axle	932773	1		
8	Bearing (697z)	936832	1		
9	Circlip	n/a	2		
10	Screw	n/a	4		
11	Gear housing	936696	1		
12	Nut	n/a	1		
13	Dowel pin	n/a	2		
14	Bearing (697z)	936832	1		
15	Sealing	n/a	1		
16	Belt	932810	1		
17	Gear (large)	932803	1		
18	Switch	932834	1		
19	Washer	n/a	2		
20	Fixed ring	n/a	1		
21	Terminal	936771	1		
22	Right housing	n/a	1		
23	Motor	936740	1		
24	Screw	n/a	2		
25	Gear (small)	936726	1		
26	Pcb	936764	1		
27	Sealing	n/a	1		
28	Left housing	n/a	1		
29	Screw	n/a	6		
30	Clip	n/a	1		
31	Serrated knife	936702	1		
32	Charger	936788	1		
33	Li-ion Battery	936795	1		
34	Sharpening stone	n/a	1		

n/a -> not available

nss -> not sold separately

Circuit diagram

 Hendi B.V. Steenoven 21 3911 TX Rhenen The Netherlands	Batch #	Appliance part#
	0000000	267257
	Description	
	Cordless kebab knife electric	

Date	02-03-2016	Revision #	Revision version
Revision	First bill of materials (BOM)		

