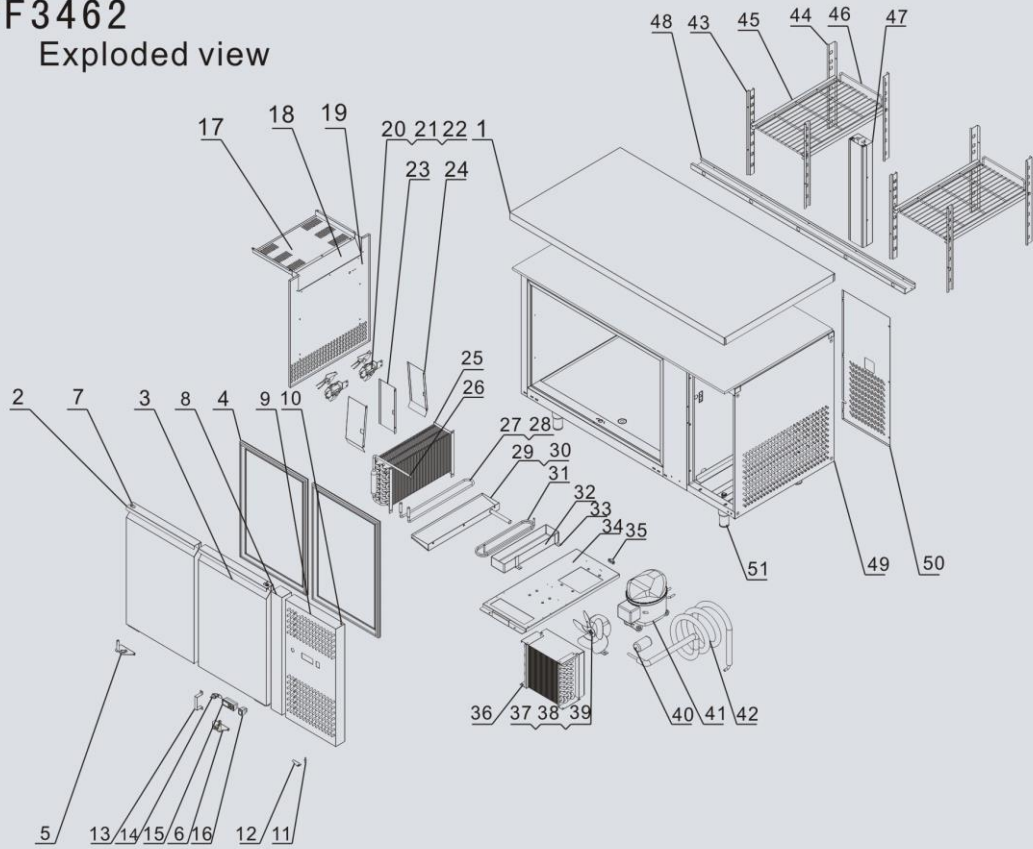


EPF3462

Exploded view



NO	NAME	PART NAME	Code	Material	QTY	Unit price (USD)
1	两门台面板	Table top	34620606	80.7×1457.2×787.8/SUS304油磨	1	58.9
2	左门	Left door	34620300L	组件	1	38
3	右门	Right door	34620300R	组件	1	38
4	门封条	Door seal	W0404022	插脚中心802×400/材质PVC黑色/F17截面	2	1.9
5	左铰链	Left hinge	W0604054	SUS304油磨	1	3.6
6	右铰链	Right hinge	W0604055	SUS304油磨	1	3.6
7	铰链轴	Hinge axis	B0604111	φ10×31/M5-13/材料201/沙拉柜通用件	2	0.6
8	箱体小前罩	Cabinet small panel	34620601	80.5×801×205/SUS304油磨	1	7.6
9	机房前罩	Machine room panel	34620602	80.7×444.4×759.4/SUS304油磨	1	8.8
10	机房前罩上铰链轴	Panel upper hinge axis	B0604115	φ6×28-430不锈钢	1	0.4
11	机房前罩下铰链轴	Panel bottom hinge axis	B0604116	φ8×27-430不锈钢	1	0.4
12	机房前罩下铰链	Panel bottom hinge	01514201	81.5×51×36/430	1	0.6
13	前罩锁座	Lock bracket	34620603	81×15×164/SUS304油磨	1	0.2
14	冰箱锁	Lock	W0604007	厂家型号:103-20P/锁舌长度:46mm	1	1.2
15	电子温控	Digital controller	W0302128	PJEZC0P000/卡乐easy系列	1	54.6
16	防水船形开关	Waterproof switch	W0308001	AC16A 250V/4脚(双刀单掷)红色指示	1	0.7
17	风道板2	Air duct board 2	34620412	80.5/259×462/SUS201油磨	1	2.5
18	风道板1	Air duct board 1	34620415	80.5/512.5×116/SUS201	1	1.2
19	蒸发器罩板	Evaporator cover	34620401	80.5×594×524/SUS304油磨	1	11.9
20	φ109吹风风叶	Fan blade	W0301071	φ109/塑料吹风/美款沙拉柜	2	0.6
21	蒸发风机	Evaporator fan	W0301040	AC220V50Hz/2750rpm/14W	2	14
22	蒸发风机支架	Evaporator fan stand	34620411	81.5/190×63/SUS201油磨	2	0.7
23	蒸发风机中间风道板	Evaporator fan air duct board (M)	34620416	80.5/240×126.5/SUS201	1	1.2
24	蒸发风机左右风道板	Evaporator fan air duct board (L&R)	34620414	80.5/251×126.5/SUS201油磨	2	0.9
25	蒸发器	Evaporator	W0202041	整7排管子, 横5排管子, 6mm翅片间距	1	77.8
26	回气管连接管	Suction pipe	W0210145	φ9.52×0.6铜管270mm, 1.1内径毛铜管400mm	1	2.5
27	除霜加热管	Defrost heating tube	W0311052	美款单门冷冻柜	1	9.7
28	化霜熔断器	Defrost fuse	W0398079	777/美款220V冰箱用	1	1.5
29	蒸发接水盘	Evaporate drain pan	34620402	80.5×148.5×504.5/SUS201油磨	1	1.7
30	接水盘加热带	Drain pan electric heater	W0310145	美款平面上单门冷冻柜	1	1.8
31	冷凝器管	Condenser coil	34620265	铜管φ6×0.75, 2.1米, 硅橡胶管φ8×1.15米	1	0
32	冷凝接水盘	Condenser drain pan	W0411208	ABS/内尺寸346×81	1	3
33	接水盘固定脚	Drain pan fixture	3422224	92.5×20, 1.0 镀锌板	1	0.6
34	机组底板	Bottom board	34620507	82.0×671×296/热镀锌板	1	7.9
35	欧式电源线固定卡	Power cord clip	W0309006	外形尺寸35×16×10	1	0.1
36	冷凝器	Condenser	W0203035	美款沙拉台单门冷柜	1	55.7
37	φ200风叶	Fan blade	W0301060	φ200V-28度吸风	1	0.8
38	风机(罩极电机)	Fan	W0301037	220V50Hz/输入36W/转向逆时针转速/引线260	1	24.2
39	风机支架	Fan stand	W0604061	高度: 72mm	1	0.3
40	干燥过滤器	Drying filter	W0204003	2-IDφ6.35×16/φ42.5×65/XH-9	1	7.9
41	压缩机	Compressor	W0201283	FFI 12HBK	1	81.2
42	回气管	Suction pipe	W0210144	φ9.52×0.6铜管1500mm, 1.1内径毛铜管3100mm	1	20.2
43	前竖排条	Front vertical holder	34621407	81.0×454.5×55/SUS201油磨	4	1
44	后竖排条	Bear vertical holder	34621408	81.0×454.5×60/SUS201油磨	4	1.1
45	食品架滑槽	Shelf guider	34620406	81.0×531×54/SUS201 2B	4	1.6
46	食品架	Shelf	W0402276	A3浸塑330×545 Φ7 Φ2.5	2	3.4
47	中梁	Middle girder	34620310	组件	1	0
48	台面下梁	Table top bottom girder	34620804	81.5×1355×129/热镀锌板	1	4.2
49	机房右板	Machine room right board	34620518	80.5×652×718/SUS304油磨	1	17.7
50	机房后板	Machine room rear board	34620519	80.5×312×707/镀锌板	1	2.3
51	调整脚	Leg	W0409018	不锈钢脚高150mm(120~180)/M14	4	5.7