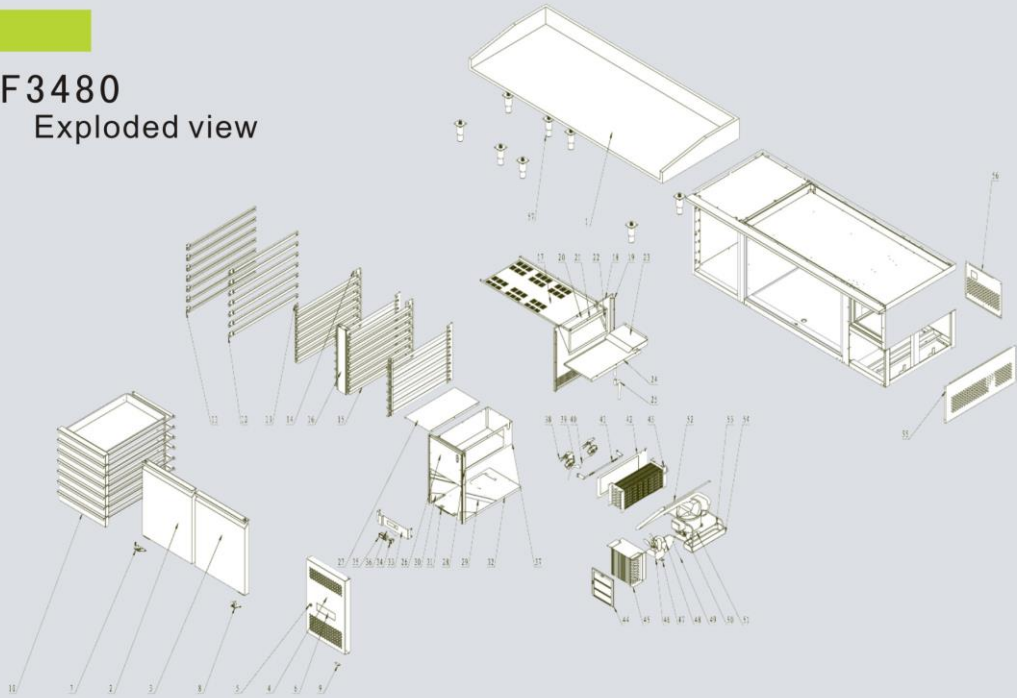


ECF3480

Exploded view



NO	NAME	English name	Code	Material	QTY	unit price (USD)
1	大理石台面	Marble table top	W0699029	2005*180*800/面边高180	1	212.1
2	左门	Left door	34800500L	组件	1	0
3	右门	Right door	34800500R	组件	1	0
4	机房前罩	Panel	34800505	δ0.7/SUS304 油磨/528.4*771.4	1	20.1
5	冰箱锁	Lock	W0604007	厂家型号:103-20P/锁舌长度:46mm	1	1.2
6	前罩板AS板	Front panel AS board	W0409826	195*65/无色透明AS	1	0.5
7	左下铰链	Bottom hinge (L)	W0604054		1	3.6
8	右下铰链	Bottom hinge (R)	W0604055		1	3.6
9	前罩板下铰链	Front panel bottom hinge	01514201	δ1.5*δ1*36 /430	1	0.5
10	侧柜抽屉	Drawer	34800920	组件	7	0
11	侧柜抽屉滑槽左	Drawer guider(L)	34800925L	组件	7	0
12	侧柜抽屉滑槽右	Drawer guider(R)	34800925R	组件	7	0
13	前竖搁条	Front vertical holder	34800407	δ1.0/SUS304 油磨/50*500	4	1.7
14	后竖搁条	Rear vertical holder	34800408	δ1.0/SUS304 油磨/500*80	4	2.7
15	食品架滑槽	Shelf guider	34800409	δ1.0/SUS304 油磨/650*52	28	1.7
16	中梁	Middle girder	34800510	组件	1	0
17	风道出风板	Air-out board	34800404	δ0.5/SUS304 油磨/820.5*475	1	14
18	蒸发前罩板	Evaporate front panel	34800406	δ0.5/SUS304 油磨/568*624	1	12.8
19	蒸发前罩支撑	Evaporate front panel support	34800405	δ1.0/SUS304 油磨/520*52	2	1.9
20	风道底封板	Air duct bottom board	34800403	δ0.5/SUS304 油磨/237*395	1	3.4
21	风道顶封板	Air duct top board	34800401	δ0.5/SUS304 油磨/395*49	1	0.7
22	风道左右板	Air duct left and right board	34800402	δ0.5/SUS304 油磨/132*204.5	2	1
23	蒸发器支撑板	Evaporator support board	34800411	δ1.0/SUS304 油磨/219*348	1	5.2
24	蒸发器接水盘	Evaporator water pan	34800214	δ0.5/SUS304 油磨/328*538	1	6.4
25	水封	Water block	W0409827	半软白色塑料	1	0.4
26	蒸发室门	Door of evaporate room	34800210	组件	1	0
27	蒸发器顶板	Evaporator top board	34800212	δ0.5/SUS304 油磨/295*540	1	5.7
28	蒸发室门固定板	Evaporate room door fixture	34800204	δ1.5/SUS201 油磨/605*46	2	0.7
29	机组底板加强拉挡	Bottom board strengthen setting lever	34800216	δ1.5/热镀锌板/46*451	2	2.1
30	机组底板加强拉挡小	Bottom board strengthen setting lever (small)	34800208	δ1.5/热镀锌板/91.5*163.5	2	2.1
31	机组把手	Handle	34800206	δ2.0/热镀锌板/160*90	1	1.3
32	机组底板	Bottom board	34800217	δ1.5/热镀锌板/363.5*654	1	8.7
33	温控器固定板	Controller fixture board	34800215	δ1.0/SUS201 油磨/430.5*80	1	0.9
34	防水船形开关	Waterproof switch	W0308001	AC16A 250V/4脚(双刀单掷)/红色指示	1	0.7
35	220V电子温控器(R)	220V digital controller	W0302136	220V50Hz/冷藏单点20(8)/A/帝思小精灵	1	38.9
36	主线束	Main wiring harness	W0303389	欧款风冷藏两门披萨抽层柜用	1	14.2
37	蒸发盒	Evaporate box	34800213	δ1.0/SUS430 油磨/631*909	1	18.4
38	φ109吹风风叶	φ109 Fan blade	W0301071	φ109/塑料/吹风/美款沙拉柜	2	0.6
39	风机(无壳罩极电机)	Fan motor	W0301040	AC220V50Hz/2750rpm/14W	2	14
40	蒸发风机线束	Evaporator fan wiring harness	W0303029		1	2.5
41	蒸发风机固定	Evaporator fan fixture	34800209	δ1.0/SUS430 油磨/529.5*65	1	1.2
42	蒸发器中档风板	Evaporator middle wind guard	34800211	δ0.5/SUS304 油磨/537.5*187	1	3.6
43	披萨抽层柜蒸发器	Evaporator	W0202043	横六排竖六排,长463宽132高185	1	92.9
44	冷凝器防尘罩	Condenser dustproof cover	W0499225	δ7.0X224X240/美款沙拉台系列	1	2
45	冷凝器	Condenser	W0203035	美款沙拉台单门冷柜	1	55.7
46	φ200风叶	φ200 Fan blade	W0301060	φ200/V-28度/吸风	1	0.8
47	风机支架	Fan support stand	W0604068	高度:65mm	1	0.4
48	风机(罩极电机)	Fan motor	W0301037	220V50Hz/输入36W/转向逆时针	1	24.2
49	压缩机线束	Compressor wiring harness	W0303033		1	3.7
50	压缩机	Compressor	W0201285	EMT65HLR	1	46.5
51	干燥过滤器	Dryer filter	W0204003	2-IDg6.35*16/φ42.5*65/XH-9	1	7.9
52	回气管	Suction pipe	W0210167	φ9.52铜管1.9米,φ2.3毛接管2.5米	1	18.7
53	接水盘固定脚	Water pan fixture leg	38000820	1.0*20*82.5/镀锌板	2	0.6
54	冷凝接水盘	Condensation water pan	W0411208	ABS/内尺寸346*81	1	3
55	机房右板	Right board	34800306	δ0.5/SUS304 油磨/758*347	1	9.5
56	机房后板	Rear board	34800307	δ0.5/热镀锌板/343*385	1	1.3
57	调整脚	Leg	W0409018	不锈钢脚高150mm(120~180)/M14	8	5.7