

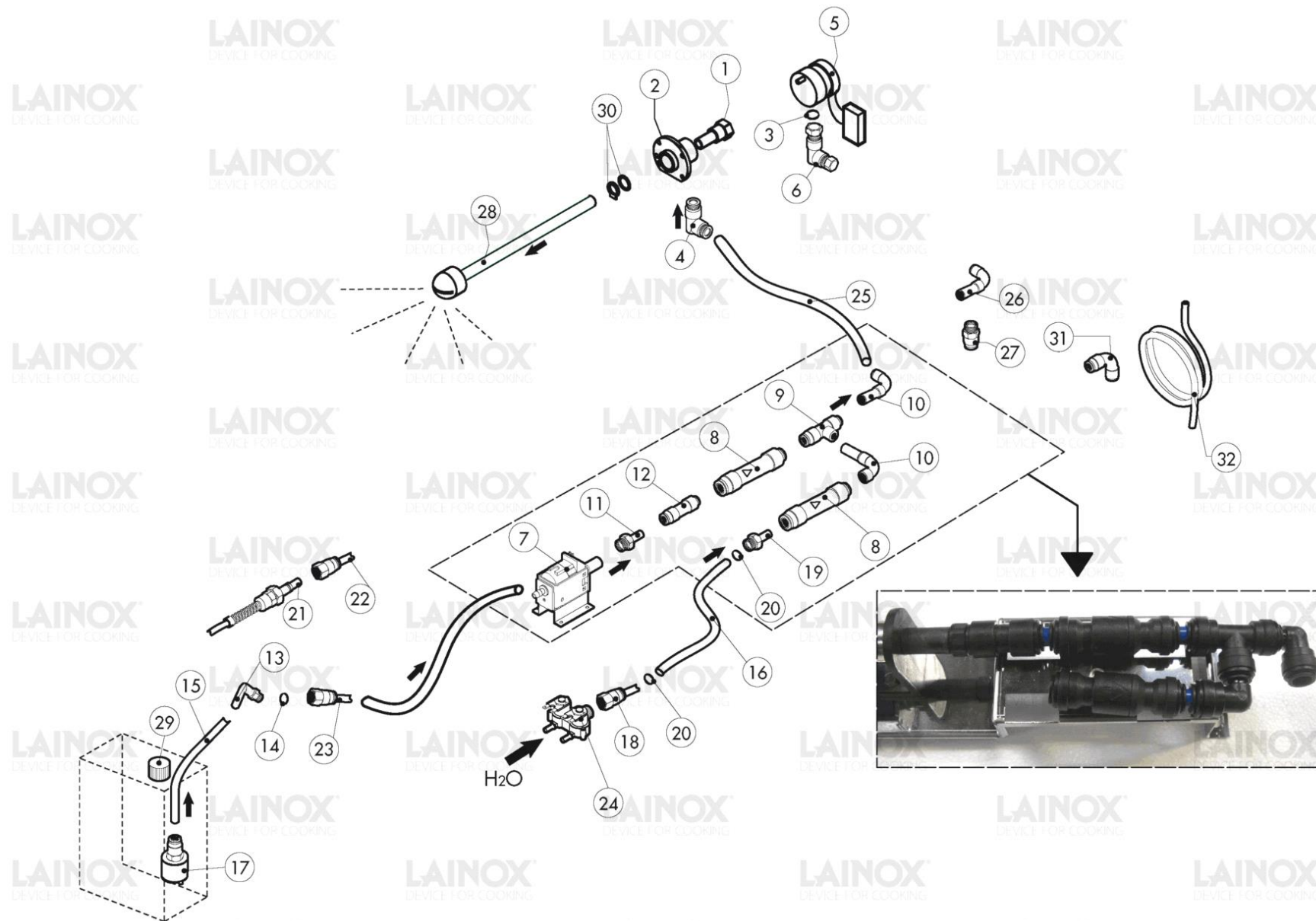
Warning! The exploded views refer to the general model

TAV.A ed.0713

Pos.	Code	Previous code	Description	Notes	From:	To:
0001	LAR10201700		FILTER [C] D.76/44.5 M/106-11			
0002	LA65321290	LAR65321290	CAP [C]			
0003	LA65090300	LAR65090300	ACTUATOR [C]			
0004	LA65321250	LAR65321250	USB OUTLET BUSH [C]			
0005	LA18421580	LAR18421580	LOWER HINGE [C] DOOR E_042-051			
0006	LA18421570	LAR18421570	UPPER HINGE [C] FOR DOOR E_042-051			
0007	LAR65140780		CONTACT [C]			
0008	LA62280038	LAR62280038	CURVE [C]			
0009	LA58004050	LAR58004050	NUT [C]			
0010	LA58004380	LAR58004380	NUT [C]			
0011	LA65110200	LAR65110200	SOLENOID VALVE [C] 220V 50HZ 1 OUTLET JG CONNECTION			
0012	LAR65110230		SOLENOID VALVE [C] 2 OUTLETS 1P+1D J.G. 220V 50HZ			
0013	LA65280450	LAR65280450	FERRITE [C]			
0014	LAR70010050		GASKET [C] 7,60X2,62			
0015	LA70020020	LAR70020020	GASKET [C] 8X22			
0016	LA70010250	LAR70010250	GASKET [C] 17,17X1,78			
0017	LA70050130	LAR70050130	GASKET [C] VENT PIPE D. 50			
0018	LA62030113	LAR62030118	COUPLING [C] BRASS REDUCTION			
0019	LA69030280	LAR69030280	BLUE KNOB [C] ENCODER D. 42 FA 6264			
0020	LAR65260540		MICROSWITCH [C] DOOR			
0021	LA65220091	LAR65220091	TERMINAL BLOCK [C] 3P+N+G			
0022	LAR65041010		MOTOR [C] 123W DOUBLE SPEED			
0023	LA69010260	LAR69010260	PRONG [C] 1 STEP			
0023	LAR69010270		DOOR LATCH 2 STEP [C]			
0024	LA58002520	LAR58002520	LOWER PIN [C] HINGE V/061-102			
0025	LA58002150	LAR58002150	UPPER PIN [C] HINGE M/106-220			
0026	LA58001850	LAR58001850	PIN [C] RACKS SUPPORT M5 MIXTER			
0027	LA65210020	LAR65210020	FUSE HOLDER [C] 5X20			
0028	LAR65270510		LAMP HOLDER [C] WITH LAMP G9 40W 230V			
0029	LAR65240030		FAIRLEAD [C]			
0030	LAR63070050		WATER PRESSURE SWITCH [C] 500/350 mbar -1/8			
0031	LAR80100101		PROFILO GUARNIZIONE NERO 2CRISTALLI 5M			
0032	LA62090478	LAR62090478	CONNECTION [C] 90° F/F D.10			
0033	LA62090458	LAR62090458	CONNECTION [C] JG STRAIGHT F/F D.10			
0034	LAR62090508		STRAIGHT CONNECTOR [C] END SIDE PIPE 10X1/4			

Pos.	Code	Previous code	Description	Notes	From:	To:
0035	LA65170100	LAR65170100	RELAY [C]			
0036	LAR65010321		RESISTENZA			
0037	LAR65302390		VERTICAL COMPLETE BOARD [C] X COMPACT			
0038	LA65302410		MAIN BOARD [C] X COMPACT			10/18/2019
0039	LAR65302420		BOARD [C] DISPLAY X COMPACT			
0040	LA65302400	LAR65302400	EXPANSION BOAD [C] S-X COMPACT			
0041	LAR65302430		COMPLETE RELAY PC BOARD [C] X COMPACT			
0042	LAR65320220		PROBE [C] K L. 1,5M			
0043	LA65321500	LA65321470	CORE PROBE [C] 4 POINTS W.PLUG N/S			
0044	LA65321530		CONNECTOR [C] CORE PROBE 6 PIN. L=450			
0045	LA65321020	LAR65321020	CAP [C]			
0046	LAR86020420	LA86020400	CORE TEMPERATURE PROBE BOX [C]			
0048	LA70044330	LAR70044330	GASKET [C] DOOR A V-C 04			
0049	LA65140700	LAR65140700	CONTACTOR [C] 4KW-20A			
0050	LA65070350	LAR65070350	THERMOSTAT [C] 360Â°C N/S/L			
0050	LA65070370		THERMOSTAT [C] 360Â°C	UL Version (USA-CAN)		
0051	LA65180420		TRANSFORMER [C] 20VA 0-220-240/12V			
0051	LA65187110		TRANSFORMER [C] 40VA 2.5/12/24V	UL Version (USA-CAN)		
0052	LA80150000		PIPE [C] LIGHT BLUE D. 10X7MM			
0053	LA70060091	LAR70060090	SILICONE COUPLING [C] D. 24X30X40			
0054	LA58006160		NOZZLE [C] D. 0,80			
0055	LA65060010	LAR65060010	FAN [C] D. 80			
0056	LA75400510	LAR75400510	FAN [C] D. 150X50 50HZ			
0057	LAR18100140		DOOR [C] E_042			
0058	LA65190251	LAR65190250	CONDENSER [C] 8ÂµF 4 FASTON 6,35 UL			
0059	LA65170170	LAR65170170	RELAY [C]			
0060	LA65301941		ENCODER [C] COMPACT 2009			
0061	LAR58005500		SEAT [C]			
0062	LA65110580		FLOW REGULATOR [C] PINK 9LT/H			
0063	LA65301930	LAR65301930	BOARD [C] ON-OFF TOP LCD X 2006			
00P1	LAR18203050		DOOR [C] E_042			
00P2	LAR71201560		GLASS PLATE [C]			
00P3	LAR58001780		CATCH [C] DOOR GLASS			
00P4	LA61620132	LAR61620132	SPRING [C] PRONG HOOK			
00P5	LA18404520	LAR18404520	SPACER [C] GLASS PROTECTION			
00P6	LA11423460	LAR11423460	PROTECTION [C] DOOR GLASS K E T 2011			

Pos.	Code	Previous code	Description	Notes	From:	To:
00P7	LA58001760	LAR58001760	HINGE [C] INTERNAL GLASS			
00P8	LA58001770	LAR58001770	PIN [C] GLASS HINGE SR2000			
00P9	LAR70050180	LAR70050100	SPACER [C] GLASS PLATE 15X8 (min.10 pcs or multiples)			
0P10	LA58001860	LAR58001860	PIN [C] RACKS SUPPORT			
0P11	LA69010210	LAR69010210	LOCK [C] 6303			
0P12	LAR69010630		COVERING [C] GROUP 6303 CLOSING			



Warning! The exploded views refer to the general model

TAV.B ed.0713

Pos.	Code	Previous code	Description	Notes	From:	To:
0001	LAR58007000		ROTATING PIN [C] MOB WASHING			
0002	LAR58007020		FLANGE [C] MOB WASHING			
0003	LA70010080	LAR70010080	GASKET [C]			
0004	LA62090663	LAR62090663	CONNECTION [C] 90° D.10-1/4			
0005	LAR65090250		GEARMOTOR [C]			3/20/2015
0006	LA62090633	LAR62090633	CURVED CONNECTOR [C] 10/10			
0007	LAR65110600		PUMP [C] PULSE BIG 230V 50HZ			
0008	LA65110680	LAR65110680	NON-RETURN VALVE [C]			
0009	LA62090468	LAR62090468	CONNECTION [C] T F/F/F JG D.10			
0010	LA62090528	LAR62090528	CONNECTION [C] 90° M/F D.10			
0011	LA62090608	LAR62090608	CONNECTION [C] JG M/M D.8-1/8			
0012	LA62090618	LAR62090618	STRAIGHT REDUCTION [C] D. 10-8			
0013	LA62090678	LAR62090678	CONNECTION [C] JG 90° M0,8 F0,8			
0014	LAR70010050		GASKET [C] 7,60X2,62			
0015	LA80150020	LAR80150020	TRANSPARENT POLIURETHANE PIPE [C] D. 8X6MM			
0016	LA80150040	LAR80150040	RUBBER PIPE [C] FOOD D. INNER 13 D. EXTERIOR 23			
0017	LA65110650	LAR65110650	FOOT VALVE [C]			
0018	LAR62090508		STRAIGHT CONNECTOR [C] END SIDE PIPE 10X1/4			
0019	LA62090608	LAR62090608	CONNECTION [C] JG M/M D.8-1/8			
0021	LA62090482	LAR62090482	QUICK MALE CONNECTOR [C]			
0022	LA62090638	LAR62090638	CONNECTOR [C] FEMALE WASHING SYSTEM			
0023	LA62090538	LAR62090538	CONNECTOR [C] 1/4PIPE 6X8			
0024	LAR65110210		SOLENOID VALVE [C] 2 WAYS 230V 50/60HZ OUT JG M D10			
0025	LA80150000		PIPE [C] LIGHT BLUE D. 10X7MM			
0026	LA62090678	LAR62090678	CONNECTION [C] JG 90° M0,8 F0,8			
0027	LA62090688	LAR62090688	CONNECTION [C] RING NUT D. 8			
0028	LAR58007060		WASHING HEAD [C]			
0029	LA58005060	LAR58005060	CAP [C]			
0030	LAR70045120		GASKET [C] MOB WASHING			
0031	LA62090478	LAR62090478	CONNECTION [C] 90° F/F D.10			
0032	LA80150040	LAR70070080	RUBBER PIPE [C] FOOD D. INNER 13 D. EXTERIOR 23			