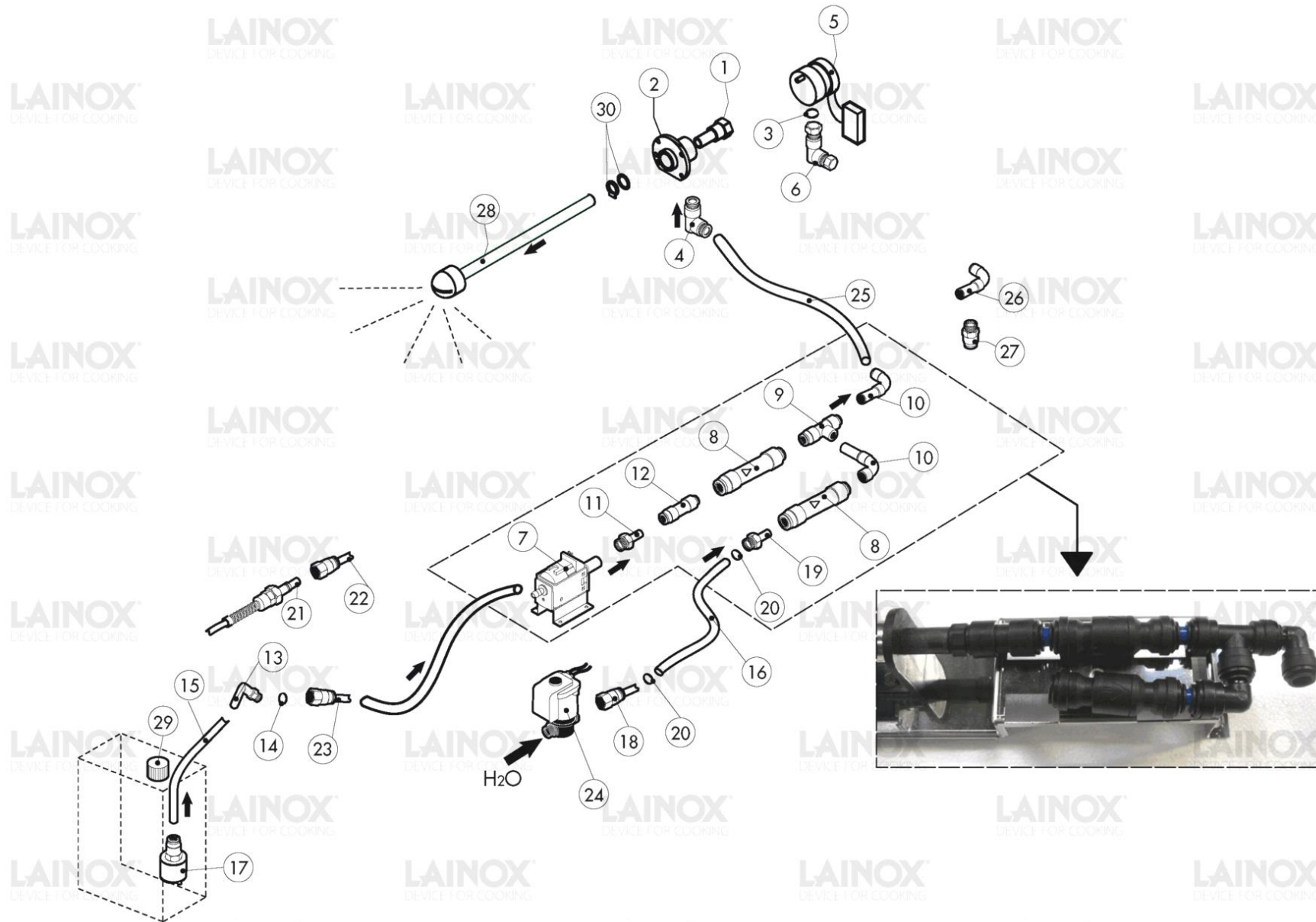


Warning! The exploded views refer to the general model

TAV.A ed.0713

Pos.	Code	Previous code	Description	Notes	From:	To:
0001	LA17201110	LAR17201110	UPPER HINGE KIT [C] DOOR REC-REV-REP 2011			
0002	LAR10201700		FILTER [C] D.76/44.5 M/106-11			
0003	LA65090300	LAR65090300	ACTUATOR [C]			
0004	LA17403910	LAR17403910	LOWER HINGE [C] REC-REV-REP			
0005	LA65321530		CONNECTOR [C] CORE PROBE 6 PIN. L=450			
0006	LA65140420	LAR65140420	CONTACT [C] 1L+1R 3RH1911-1FA11			7/17/2016
0007	LA58004050	LAR58004050	NUT [C]			
0008	LAR65110240		SOLENOID VALVE [C] 220V 50HZ 3 OUTLETS JG CONNECTION			
0009	LA65301941		ENCODER [C] COMPACT 2009			
0010	LA75300150	LAR75300150	PROTECTION GRID [C] FAN D. 170			
0011	LA62030113	LAR62030118	COUPLING [C] BRASS REDUCTION			
0012	LA69030280	LAR69030280	BLUE KNOB [C] ENCODER D. 42 FA 6264			
0013	LAR65260540		MICROSWITCH [C] DOOR			
0014	LA65220091	LAR65220091	TERMINAL BLOCK [C] 3P+N+G			
0015	LAR65041040		MOTOR [C] DOUBLE SPEED			
0016	LA69010260	LAR69010260	PRONG [C] 1 STEP			
0016	LAR69010270		DOOR LATCH 2 STEP [C]			
0017	LA58002520	LAR58002520	LOWER PIN [C] HINGE V/061-102			
0018	LA58002150	LAR58002150	UPPER PIN [C] HINGE M/106-220			
0019	LA58001850	LAR58001850	PIN [C] RACKS SUPPORT M5 MIXTER			
0020	LA69070220	LAR69070220	FOOT [C] H. 60			
0021	LA65210020	LAR65210020	FUSE HOLDER [C] 5X20			
0022	LAR65270510		LAMP HOLDER [C] WITH LAMP G9 40W 230V			
0023	LAR65240200		FAIRLEAD [C]			
0024	LAR63070050		WATER PRESSURE SWITCH [C] 500/350 mbar -1/8			
0025	LAR62090508		STRAIGHT CONNECTOR [C] END SIDE PIPE 10X1/4			
0026	LA65170180	LAR65170180	RELAY [C]			
0027	LA65012152	LAR65011530	HEATING ELEM. [C] 6000W 230V CHAMBER ALPHA.			
0028	LA62090788	LAR62090788	REDUCTION [C] D. 10-6			
0029	LAR65302120		COMPLETE BOARD [C] S COMPACT 2009			
0030	LA65302280		MAIN BOARD [C] S COMPACT 2009			
0031	LA65302270	LAR65302270	RELAY PC BOARD [C] S COMPACT 2009 042-REV			
0032	LAR65320220		PROBE [C] K L. 1,5M			
0033	LA65321500	LA65321470	CORE PROBE [C] 4 POINTS W.PLUG N/S			
0034	LA65321020	LAR65321020	CAP [C]			
0035	LAR86020420	LA86020400	CORE TEMPERATURE PROBE BOX [C]			

Pos.	Code	Previous code	Description	Notes	From:	To:
0037	LA70044400	LAR70044401	GASKET [C] DOOR REV 071			
0038	LA65140380	LAR65140380	CONTACTOR [C] 3RT1016-1AP02			
0039	LA65070460	LAR65070460	THERMOSTAT [C] 360Â°C			
0040	LA65180420		TRANSFORMER [C] 20VA 0-220-240/12V			
0040	LA65187110		TRANSFORMER [C] 40VA 2.5/12/24V	UL Version (USA-CAN)		
0041	LA65060050	LAR65060050	FAN [C] D. 120			
0042	LA75400410		FAN [C] D. 180X77 50HZ	50Hz		
0042	LA75400430		FAN [C] D. 180X77 60HZ	60Hz		
0043	LA65302450	LAR65301960	BUZZER BOARD [C] OVEN S			
0044	LAR17102710		DOOR [C] REV-RGV071			
0045	LAR58005500		SEAT [C]			
0046	LA65110580		FLOW REGULATOR [C] PINK 9LT/H			
0047	LAR70030170		GRAPHITE GASKETS KIT [C] 76X40,3X3 SET 5 PIECES			
0048	LA65190081		CONDENSER [C] .5ÂµF V425-B UL			
00P1	LAR17200860		EXTERIOR DOOR [C] REV-RGV-REC-RGC 071			
00P2	LAR71201910		GLASS PLATE [C]			
00P3	LAR58001780		CATCH [C] DOOR GLASS			
00P4	LA61620152	LAR61620152	SPRING [C] PRONG HOOK			
00P5	LA18404520	LAR18404520	SPACER [C] GLASS PROTECTION			
00P6	LA11425830	LAR11425830	PROTECTION [C] GLASS DOOR 1SIDE40+1SIDE 15			
00P7	LA58001760	LAR58001760	HINGE [C] INTERNAL GLASS			
00P8	LA58001770	LAR58001770	PIN [C] GLASS HINGE SR2000			
00P9	LAR70050180	LAR70050100	SPACER [C] GLASS PLATE 15X8 (min.10 pcs or multiples)			
0P10	LA58001860	LAR58001860	PIN [C] RACKS SUPPORT			
0P11	LA69010230	LAR69010290	LOCK [C] 6303			
0P12	LA69011001		COP.INT.MECC.CHIUS.GRUPPO 6303 COMPACT			



Warning! The exploded views refer to the general model

TAV.B ed.0713

Pos.	Code	Previous code	Description	Notes	From:	To:
0001	LAR58007000		ROTATING PIN [C] MOB WASHING			
0002	LAR58007020		FLANGE [C] MOB WASHING			
0003	LA70010080	LAR70010080	GASKET [C]			
0004	LA62090663	LAR62090663	CONNECTION [C] 90° D.10-1/4			
0005	LAR65090250		GEARMOTOR [C]			3/20/2015
0006	LA62090633	LAR62090633	CURVED CONNECTOR [C] 10/10			
0007	LAR65110600		PUMP [C] PULSE BIG 230V 50HZ			
0008	LA65110680	LAR65110680	NON-RETURN VALVE [C]			
0009	LA62090468	LAR62090468	CONNECTION [C] T F/F/F JG D.10			
0010	LA62090528	LAR62090528	CONNECTION [C] 90° M/F D.10			
0011	LA62090608	LAR62090608	CONNECTION [C] JG M/M D.8-1/8			
0012	LA62090618	LAR62090618	STRAIGHT REDUCTION [C] D. 10-8			
0013	LA62090678	LAR62090678	CONNECTION [C] JG 90° M0,8 F0,8			
0014	LAR70010050		GASKET [C] 7,60X2,62			
0015	LA80150020	LAR80150020	TRANSPARENT POLIURETHANE PIPE [C] D. 8X6MM			
0016	LA80150040	LAR80150040	RUBBER PIPE [C] FOOD D. INNER 13 D. EXTERIOR 23			
0017	LA65110650	LAR65110650	FOOT VALVE [C]			
0018	LAR62090508		STRAIGHT CONNECTOR [C] END SIDE PIPE 10X1/4			
0019	LA62090608	LAR62090608	CONNECTION [C] JG M/M D.8-1/8			
0021	LA62090482	LAR62090482	QUICK MALE CONNECTOR [C]			
0022	LA62090638	LAR62090638	CONNECTOR [C] FEMALE WASHING SYSTEM			
0023	LA62090538	LAR62090538	CONNECTOR [C] 1/4PIPE 6X8			
0024	LA65110200	LAR65110200	SOLENOID VALVE [C] 220V 50HZ 1 OUTLET JG CONNECTION			
0025	LA80150000		PIPE [C] LIGHT BLUE D. 10X7MM			
0026	LA62090678	LAR62090678	CONNECTION [C] JG 90° M0,8 F0,8			
0027	LA62090688	LAR62090688	CONNECTION [C] RING NUT D. 8			
0028	LAR58007050		WASHING HEAD [C]			
0029	LA58005060	LAR58005060	CAP [C]			
0030	LAR70045120		GASKET [C] MOB WASHING			