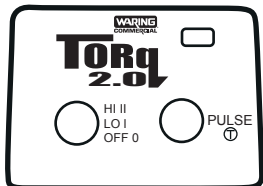
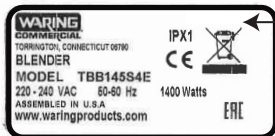
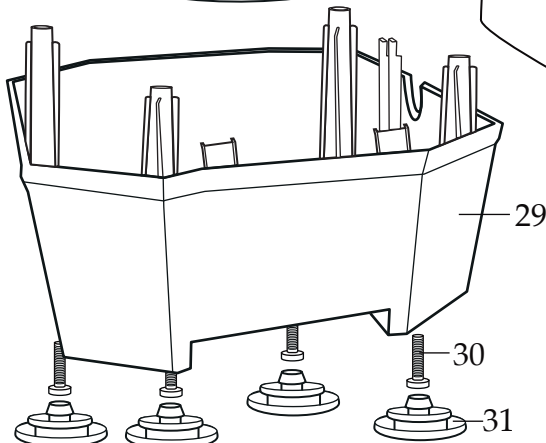
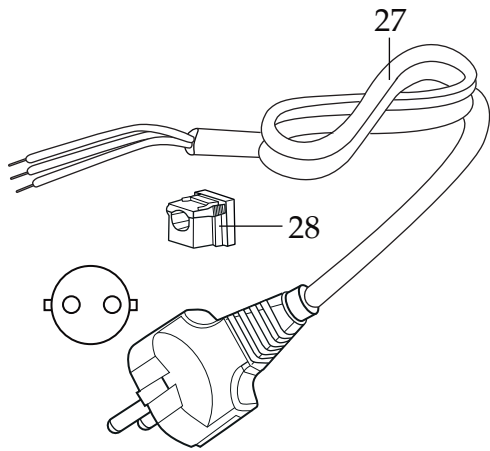
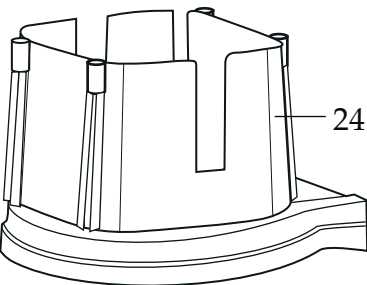
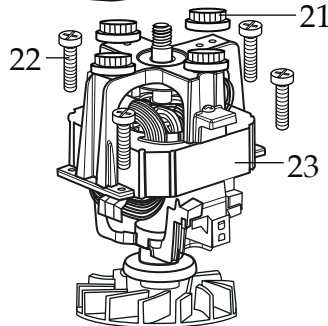
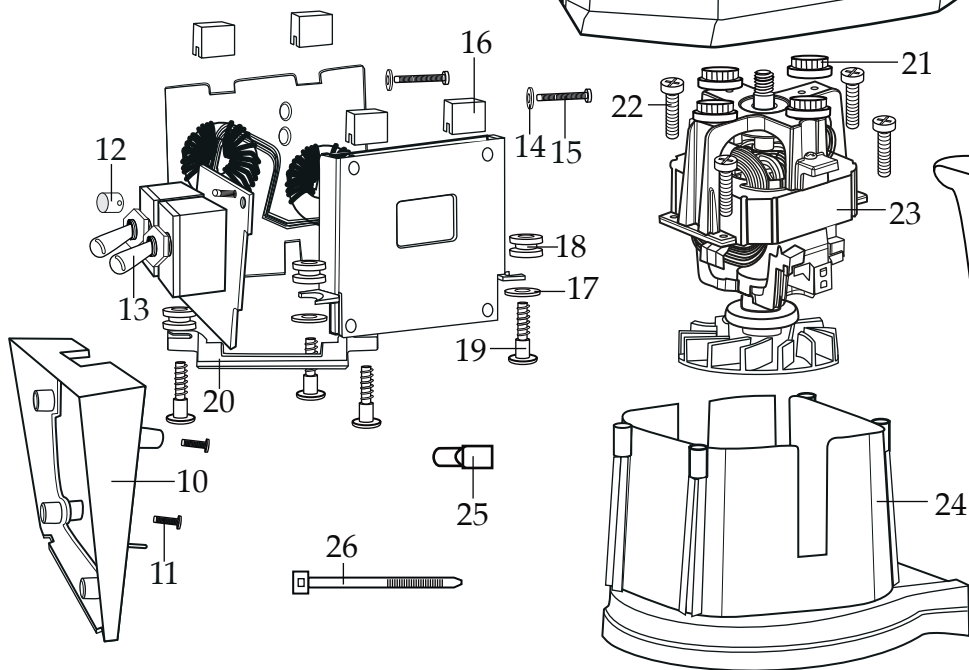
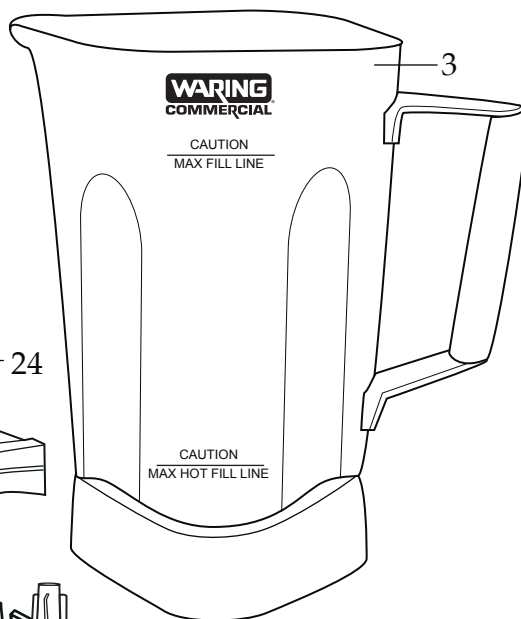
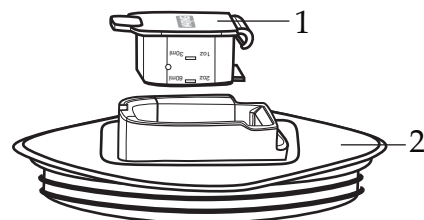
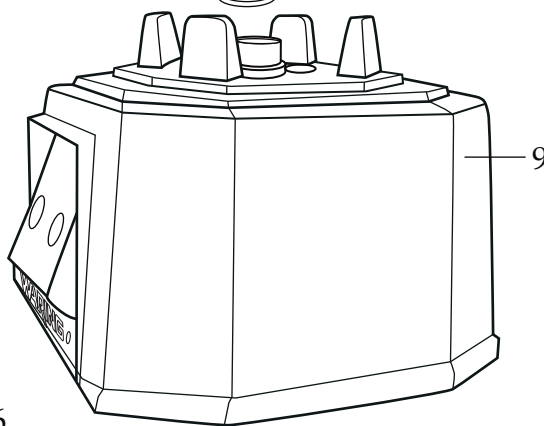
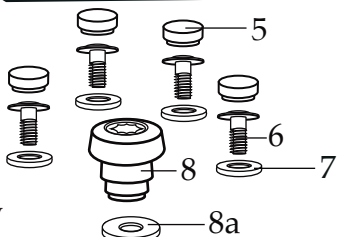
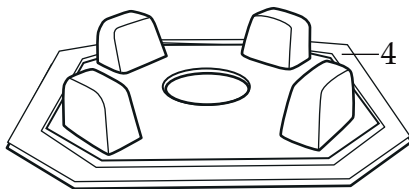


WARING
COMMERCIAL

Europe **TORq** 2.0 Blender
with 2 Toggle Switches and
48 oz. Stainless Steel Container
TBB145S4E



035871
Control Panel Overlay



Illustration#	Part#	Description
1	035153	Eastman Jar Lid Cover
2	036319-V	Vinyl Jar Cover
3	503515 036320	48 oz. Stainless Steel Container Complete 48 oz. Stainless Steel Container ONLY
4	035885	Jar Pad
5	035085	Hole Plug (4 required)
6	034275	Sems (4 required)
7	034273	B Gasket (4 required)
8	037034 035251	Drive Coupling (on units after 11/15/2019) Drive Coupling
8a	037033	Coupling Washer (on units after 11/15/2019)
9	503460-145-E	Top Housing Assembly
10	035083	Control Housing Back Bezel
11	035090	Screw (2 required)
12	035253	LED Lens
13	035163	TBB145 230 volt Control Panel Assembly
14	035255	Washer (2 required)
15	035089	Screw (2 required)
16	034900	PCB Cushion (4 required)
17	013604	Washer (4 required)
18	034904	Rubber Grommet (4 required)
19	034902	Sems (4 required)
20	035894	Control Board Bracket
21	034272	A Gasket (4 required)
22	034274	Screw (4 required)
23	035816	Chiaphua Motor No Sensor
24	503483	Motor Housing with Dampeners
25	012409 019123	Small Crimp Connectors (2 required) Large Crimp Connector (3 required)
26	013731	Cable Ties (6 required)
27	017948	Cordset
28	033619	Strain Relief
29	503480 035079	Bottom Housing Assembly with Feet Bottom Housing ONLY

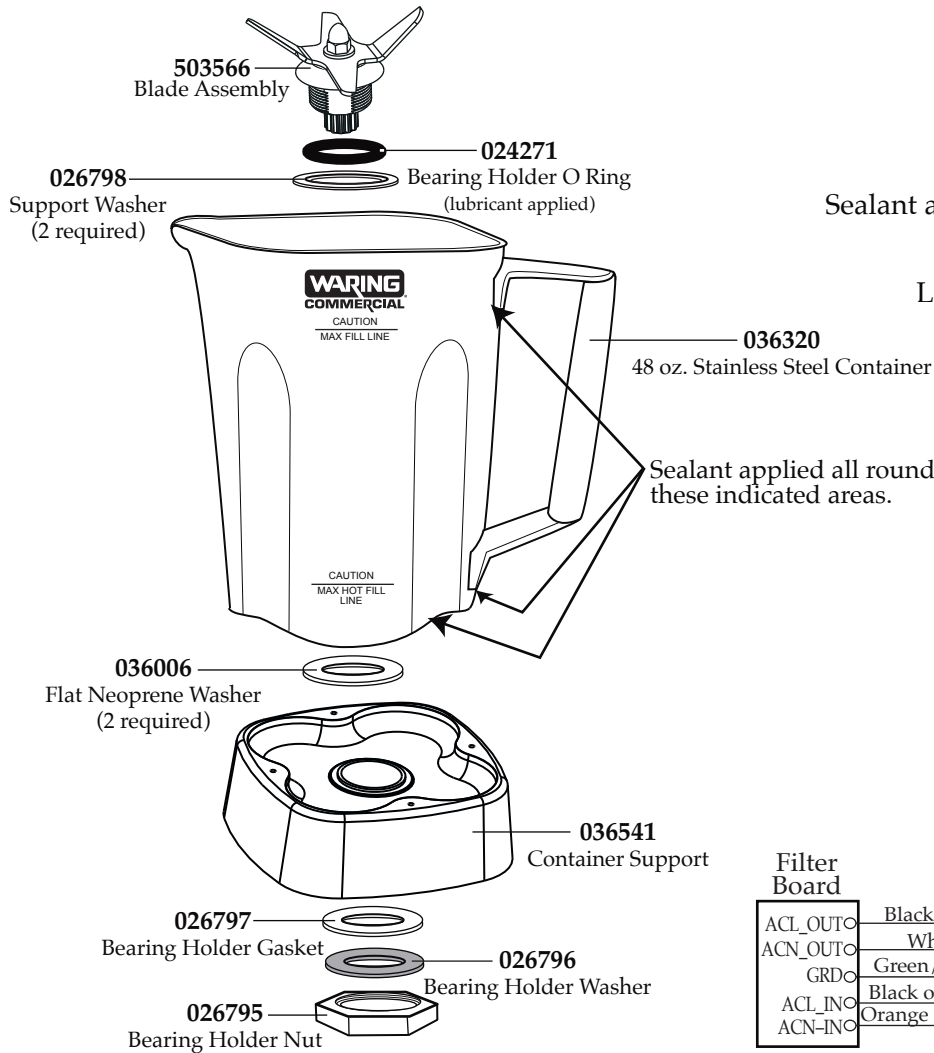
Illustration#	Part#	Description
30	034274	Screw (4 required)
31	035088	Foot (4 required)

Notes:

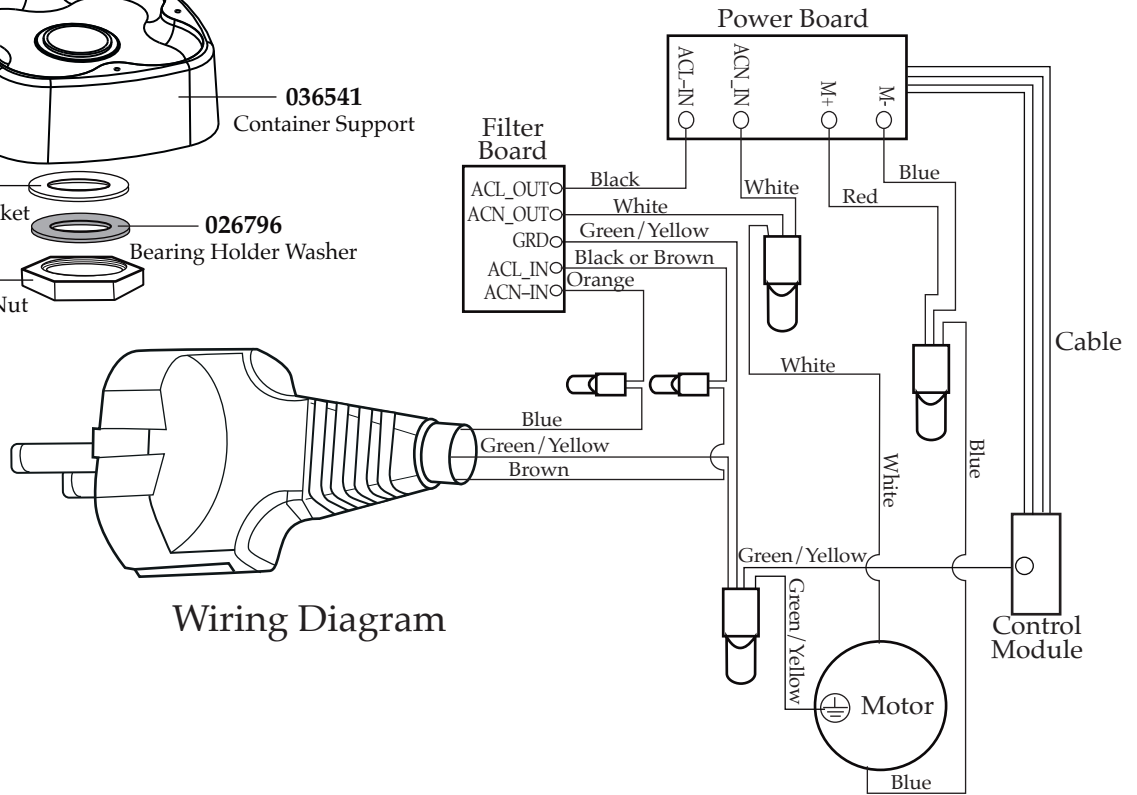
Torque 100-125 in/lbs

Sealant applied all around indicated areas.
Dow Corning Sealant RTV 733

Lubricant applied to O Ring
Dow Corning 200 (R) Fluid



Sealant applied all round these indicated areas.



Wiring Diagram