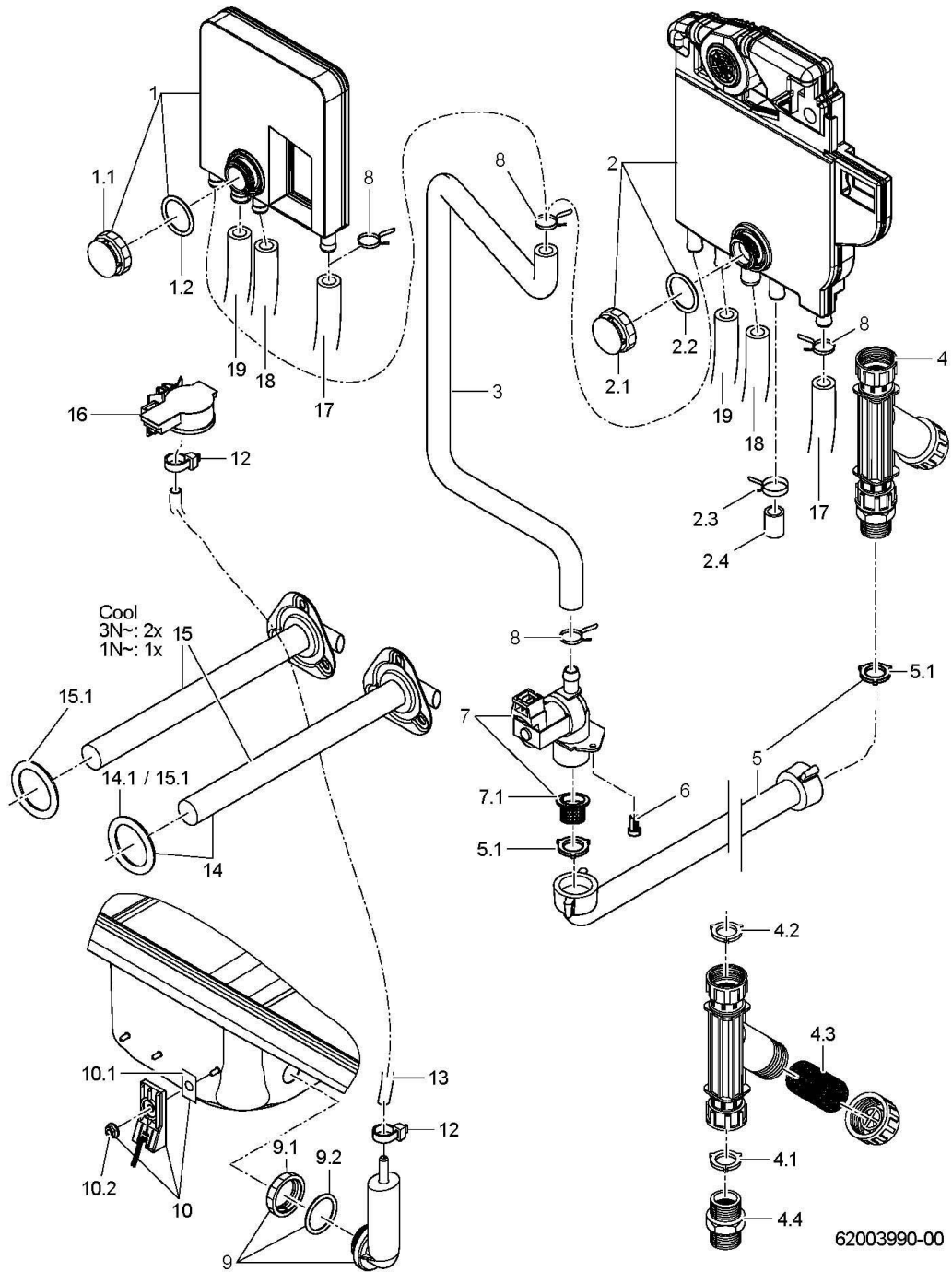


Spare parts list UC-S

Contents

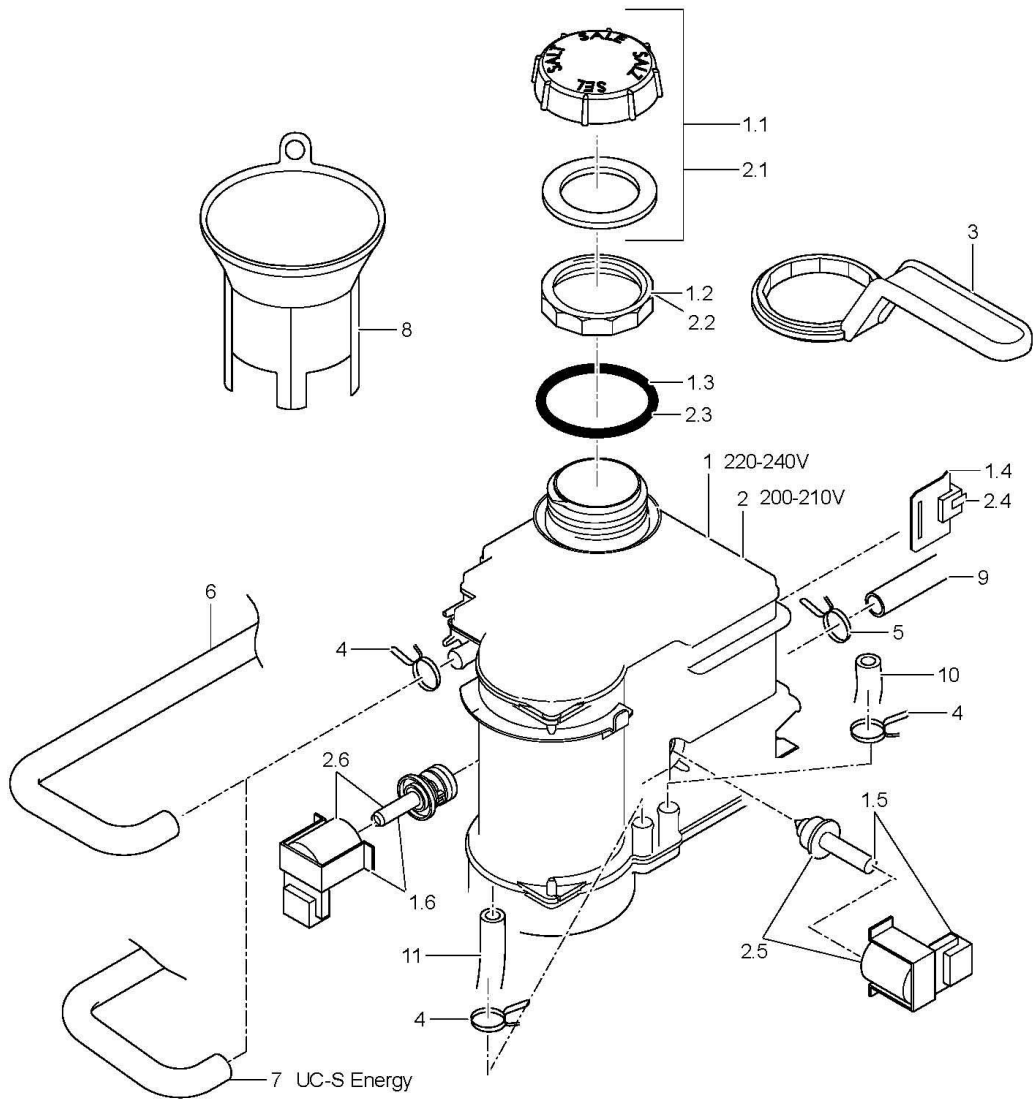
Water inlet and tank heating	Page 1 - 2
Water softener	Page 3 - 4
Water drain, Mediamat Cyclo	Page 5 - 6
Circulating pump	Page 7 - 8
Wash + rinse; bottom	Page 9 - 10
Wash + rinse; top	Page 11 - 12
Boiler	Page 13 - 16
Dosage	Page 17 - 18
Panelling	Page 19 - 20
Cover plate, electrical parts	Page 21 - 22
Door	Page 23 - 24
Energy (Option)	Page 25 - 26
Hoses	Page 27 - 28
Accessories	Page 29 - 30



UC-S

Water inlet and tank heating

Item.	Designation	Parts no.:	Pc.	Notes
1	Kit airflow preventer type "BPD"	30000128		
1.1	Nut; D26,2 X 16; SW32	62003853		
1.2	O-ring; 25,7 X 3	27 07 097		
2	Kit backflow preventer type "Air Gap"	30000127		
2.1	Nut; D26,2 X 16; SW32	62003853		
2.2	O-ring; 25,7 X 3	27 07 097		
2.3	Wire hose clamp; D14,4 X 15,1	28 02 344		
2.4	Locking cap; DN10 X 2,0 X 19	60004630		
3	Moulded hose; DN10 X 3,5	62003838		
4	Dirt trap; 150 µM	80002153		
4.1	Gasket; D16 X D24 X 3,0	80002241	3	
4.2	Strainer; D27 X 67 X 150µM	80002728		
4.3	Double nipple; G 3/4" X 40; SW30	80002167		
5	Water supply hose; DN13 X 3,5; 2500	40 02 060		
5.1	Gasket; D16 X D24 X 3,0	80002241	2	
6	Raised head screw; M4 X 8	20 10 310	2	
7	Solenoid valve flow restrictor 4l; 230-240V 50/60HZ RAST5	31 06 250		
7	Solenoid valve flow restrictor 4l; 200-240V/50-60HZ/+10%	31 06 251		Japan; Australia
7	Solenoid valve flow restrictor 3l; 200-240V/50-60HZ/+10%	31 06 211		Energy
7.1	Solenoid valve filter	31 06 186		
8	Wire hose clamp; D17,3 X 1,8	28 02 353		
9	Kit air chamber	30000114		
9.1	Nut; D26,2 X 8; SW32	60004612		
9.2	O-ring; 25,7 X 3	27 07 097		
10	Kit thermal sensor	30000126		
10.1	Heat conducting foil; 24 X 17 X 0,25MM	31 14 096		
10.2	Ratchet nut; M5	21 01 310		
12	Cable tie; 100 X 2,5	31 20 175		
13	Hose; DN5 X 1,5	40 01 024		700 mm; "By-the-metre" goods
14	Kit high power heating cartridge 1.8KW	30000122		
14.1	O-ring; 34 X 6,0	27 07 092		
15	Kit high power heating cartridge 2.5KW	30000123		UC-S Cool
15.1	O-ring; 34 X 6,0	27 07 092		
16	Pressure transmitter; 0-30MBAR;5VDC/0,5-3,5V	31 26 044		
17				See page 27-28
18	Moulded hose; DN13 X 2,0	62003889		
19	Moulded hose; DN10 X DN13 X 2,0	62003890		

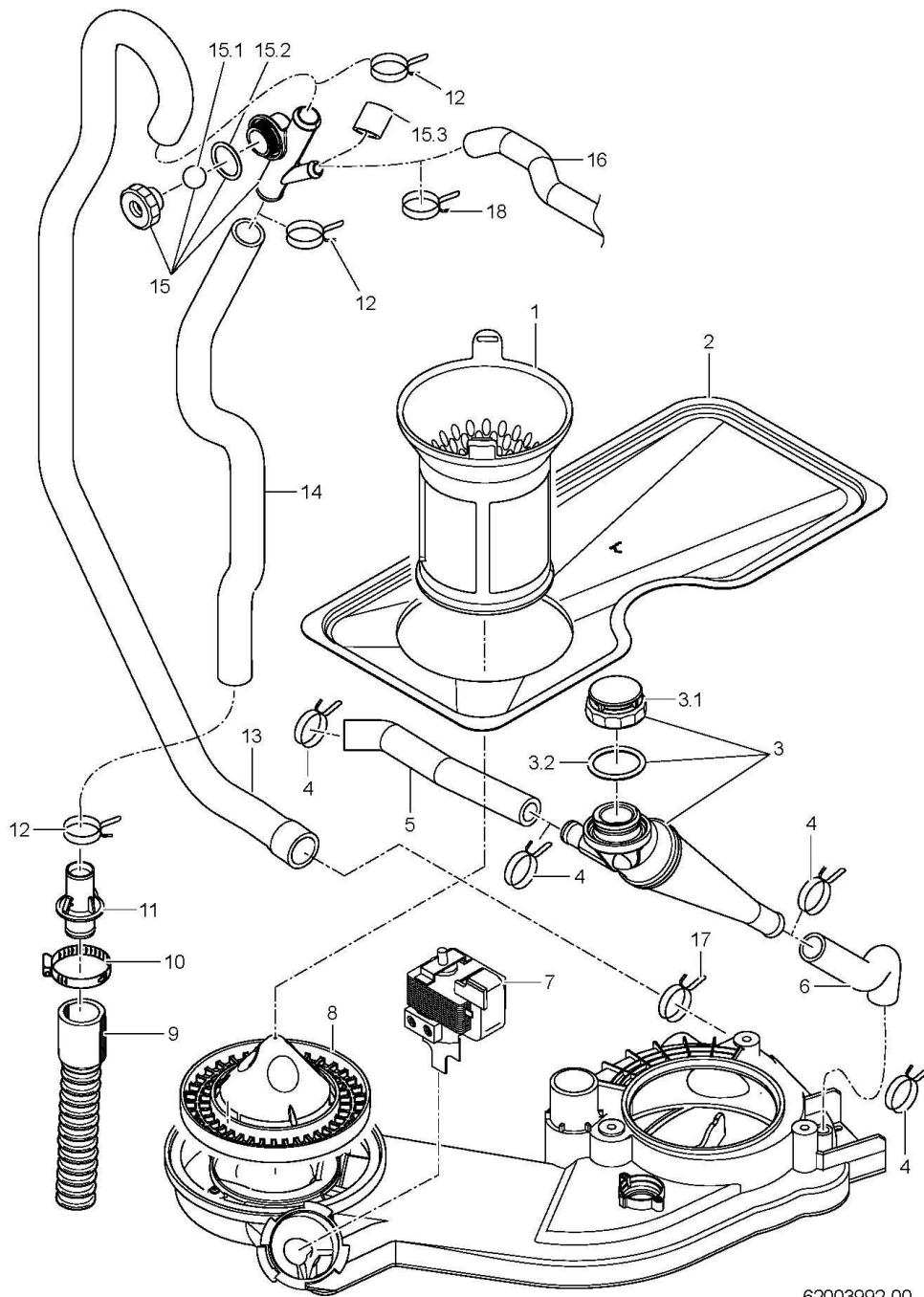


62003991-00

UC-S

Water softener

Item.	Designation	Parts no.:	Pc.	Notes
1	Water softener kit; 220-240V; 50/60HZ	83000420		
1.1	Salt container cover with gasket	83000496		
1.2	Lock nut; S54 X 4; D56	60003001		
1.3	O-ring; 54 X 5	27 07 065		
1.4	Dry reed contact lack of salt	83000408		
1.5	Repair kit regeneration valve; 220-240V,50/60HZ	83000402		
1.6	Repair kit reversing valve; 220-240V,50/60HZ	83000460		
2	Water softener kit; 200-210V; 50/60HZ	83000421		
2.1	Salt container cover with gasket	83000496		
2.2	Lock nut; S54 X 4; D56	60003001		
2.3	O-ring; 54 X 5	27 07 065		
2.4	Dry reed contact lack of salt	83000408		
2.5	Repair kit regeneration valve; 200-210V,50/60HZ	83000463		
2.6	Repair kit reversing valve; 200-210V,50/60HZ	83000467		
3	Double hex ring spanner; SW61,5	60003376		
4	Wire hose clamp; D16,4 X 1,8	28 02 352	2	
5	Wire hose clamp; D14,4 X 15,1	28 02 344	2	
6	Moulded hose; DN10 X D11 X 2,0	62003883		
7	Moulded hose; DN10 X 2,0	62003806		UC-S Energy
8	Filling funnel	35 02 013		
9	Hose; DN10 X 2,0	40 01 050		900 mm; "By-the-metre" goods
10	Moulded hose; DN10 X 2,0	62003892		
11	Moulded hose; DN10 X 2,0	62003891		

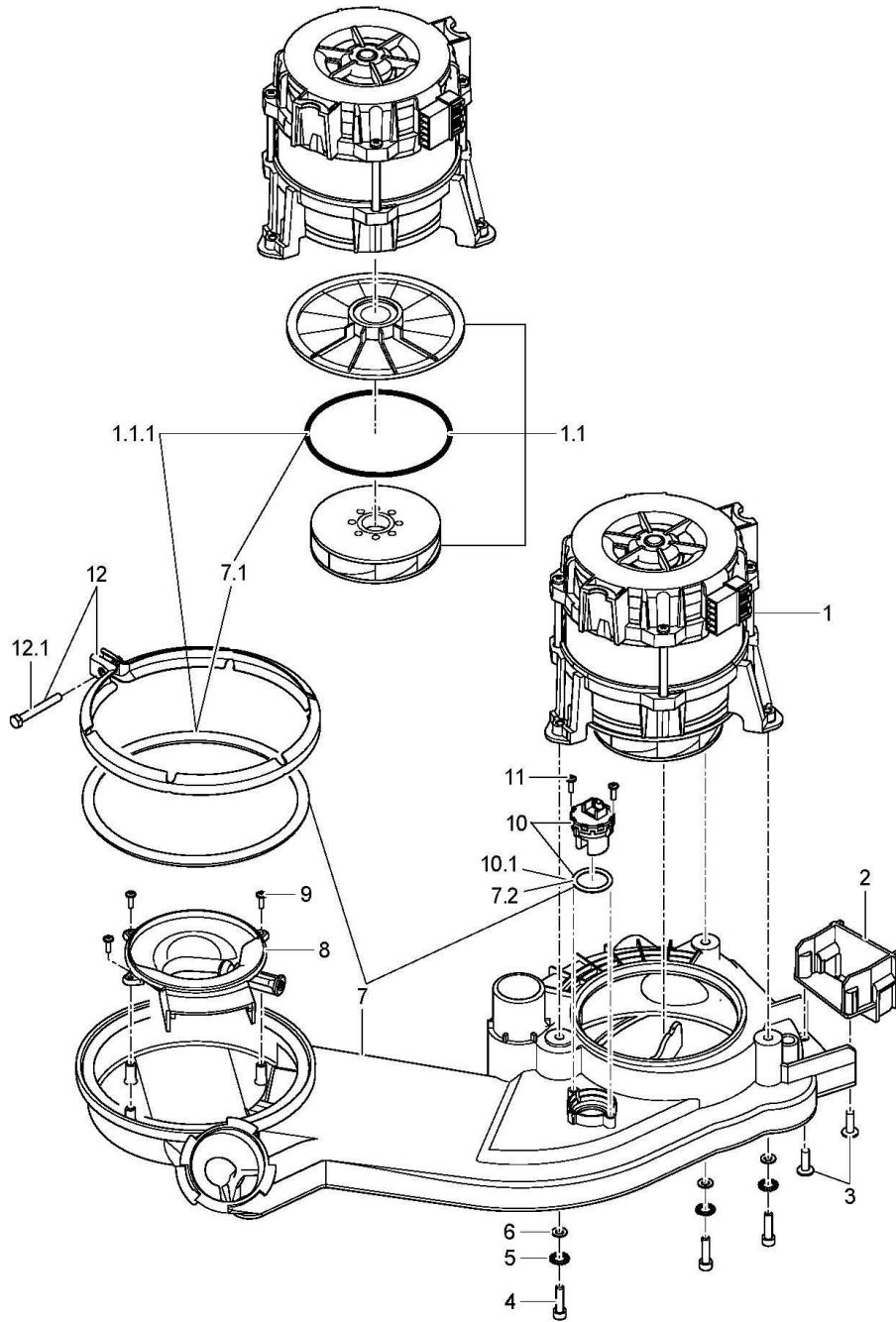


62003992-00

UC-S

Water drain, Mediamat Cyclo

Item.	Designation	Parts no.:	Pc.	Notes
1	FILTER CYLINDER	60004463		
2	Flat filter; 1,0 X 199,35 X 431,13	62003689		
3	Kit Mediamat	30000113		
3.1	Nut; D26,2 X 16; SW32	62003853		
3.2	O-ring; 25,7 X 3	27 07 097		
4	Wire hose clamp; D17,3 X 1,8	28 02 353		
5	Moulded hose; DN10,5 X 3,0; 138	62003815		
6	Shaped hose; DN12,5 X 2,0; 115	62003409		
7	Drain pump; 220-240V/50HZ	31 02 480		
7	Drain pump; 200V/50HZ;220-240V/60H	31 02 493		
7	Drain pump; 200V/60HZ	31 02 495		
8	FILTER BOTTOM; D139 X 63,5	60004466		
9	Drain hose; 1500 LG	60003738		
10	Hose clamp; D20-30 X 12	28 02 109		
11	Double nipple; D21,8 X 55, D20,8	60004609		
12	Wire hose clamp; D24,2 X 2,2	28 02 358		
13	Shaped hose; DN18 X DN22 X 3,5	62003108		
14	Reinforced hose; DN19 X 2,5	40 01 046		500 mm; "By-the-metre" goods
15	Deaeration kit	60003514		
15.1	Ball; D14	28 01 508		
15.2	O-ring; 24 X 3,0	27 07 087		
15.3	Round cap; D11 X 20	35 03 029		
16	Hose; DN10 X 2,0	40 01 050		from built-in water softener
17	Wire hose clamp; D30 X 2,8	30000212		
18	Wire hose clamp; D14,4 X 15,1	28 02 344		

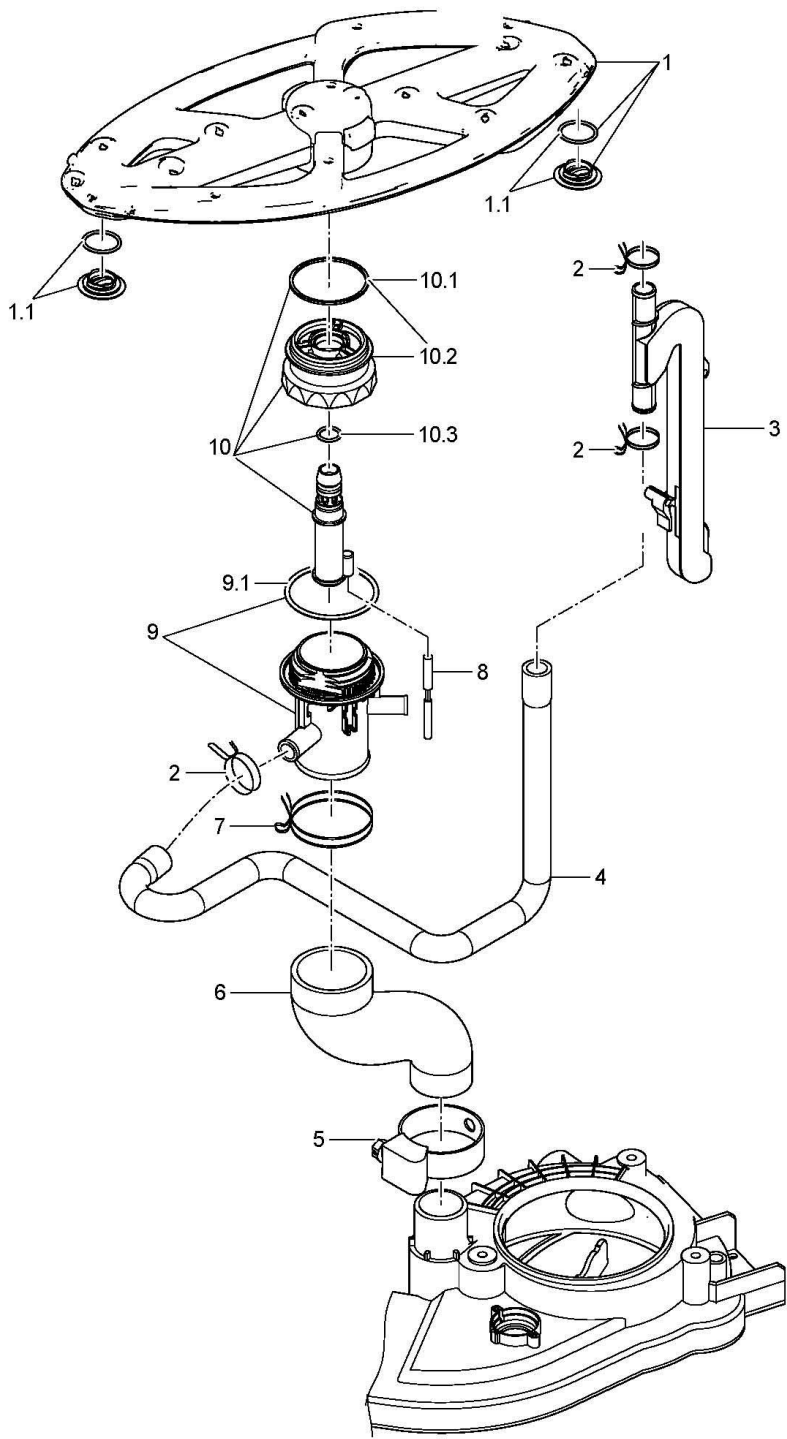


62003993-00

UC-S

Circulating pump

Item.	Designation	Parts no.:	Pc.	Notes
1	KIT CIRCULATING PUMP	30000167		
1.1	Impeller with sealings kit; D92	60003592		
1.1.1	Sealing for pump system kit	60003591		
2	Adapter bracket	62003842		
3	PT screw; KB 50 X 16	20 17 007	2	
4	Cylinder head screw; M5 X 20; 8,8	20 09 337	3	
5	Serrated lock washer; A-5,3	22 02 316	3	
6	Washer; D5,3 X D10 X 1,0	22 01 305	3	
7	Kit COLLECTOR	30000169		
7.1	Sealing for pump system kit	60003591		
7.2	O-ring; 21 X 3	27 07 096		
8	SUCTION CHANNEL	60004467		
9	PT screw; KB 30 X 10	20 17 005	3	
10	KIT DIFFUSION SENSOR	30000168		
10.1	O-ring; 21 X 3	27 07 096		
11	PT screw; KB 30 X 10	20 17 005	2	
12	Pump clip	62003437		
12.1	Hexagon screw; M5 X 40; A70	20 01 329		

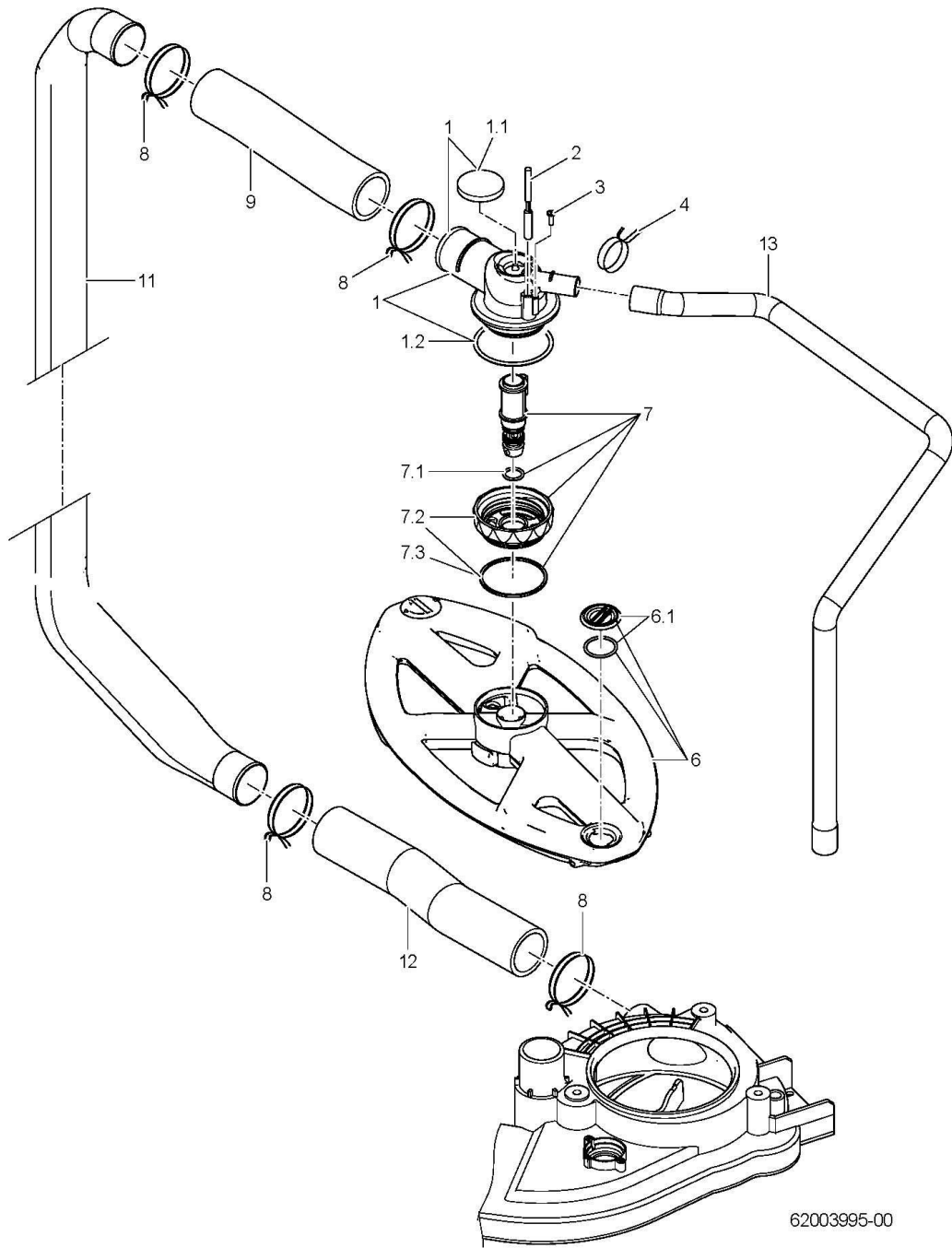


62003994-00

UC-S

Wash + rinse; bottom

Item.	Designation	Parts no.:	Pc.	Notes
1	Wash field	62003744		
1.1	Plug	60004854	2	
2	Wire hose clamp; D21,2 X 2	28 02 355		
3	Rinse manifold	60004611		
4	Moulded hose bottom; DN13,5 X 3,0 X 572,5	62003813		
5	Hose clamp; D32-52 X 12	28 02 110		
6	Reducing hose; DN33 X DN46; 101	62003752		
7	Wire hose clamp; D56 X 3,5	28 02 371		
8	Magnetic switch; 25,5 X D5,8; 220MM LG	31 24 297		
9	KIT WATER INLET BOTTOM	30000199		
9.1	O-ring; 56 X 3,0	27 07 086		
10	Kit wash field take-up device bottom	30000112		
10.1	Seal ring; D48,4 X 52,5 X 1,6	60004430		
10.2	Lock nut bottom	60004872		
10.3	O-ring; 13 X 2	30000251		

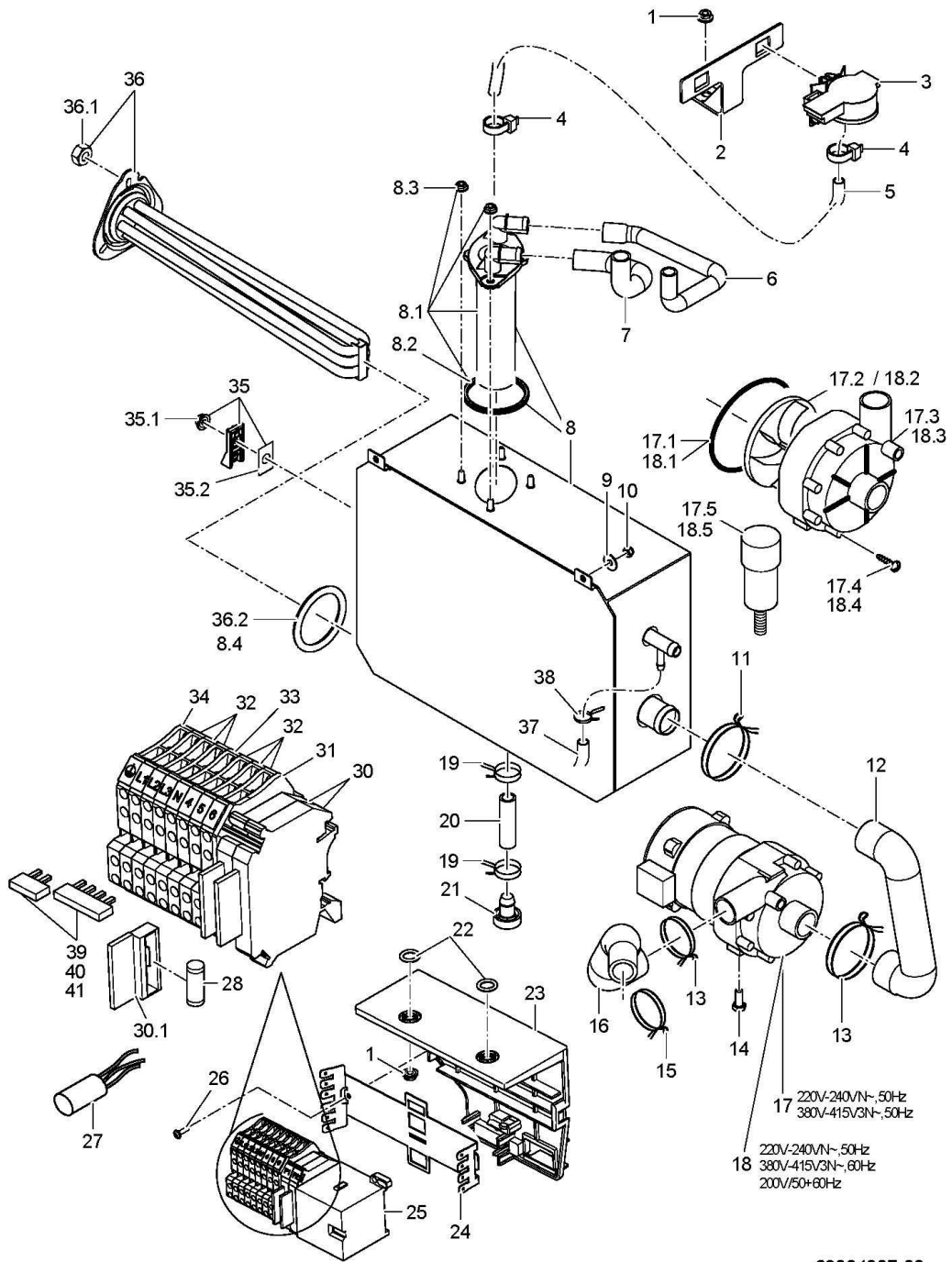


62003995-00

UC-S

Wash + rinse; top

Item.	Designation	Parts no.:	Pc.	Notes
1	KIT WATER INLET TOP	30000200		
1.1	FOAM RUBBER	60004500		
1.2	O-ring; 56 X 3,0	27 07 086		
2	Magnetic switch; 25,5 X D5,8; 220MM LG	31 24 297		
3	PT screw; KB 30 X 10	20 17 005		
4	Wire hose clamp; D21,2 X 2	28 02 355		
6	Wash field	62003744		
6.1	Plug	60004854	2	
7	Kit wash field take-up device top	30000111		
7.1	O-ring; 13 X 2	30000251		
7.2	Lock nut top	60004870		
7.3	Seal ring; D48,4 X 52,5 X 1,6	60004430		
8	Wire hose clamp; D44,4 X 3,2	28 02 367		
9	Hose; DN33 X 4,0; 225	60004843		adapt
11	RISER	62003779		
12	Hose; DN33 X 4,0; 225	60004843		adapt
13	Moulded hose top; DN13,5 X 3,0 X 459	62003814		



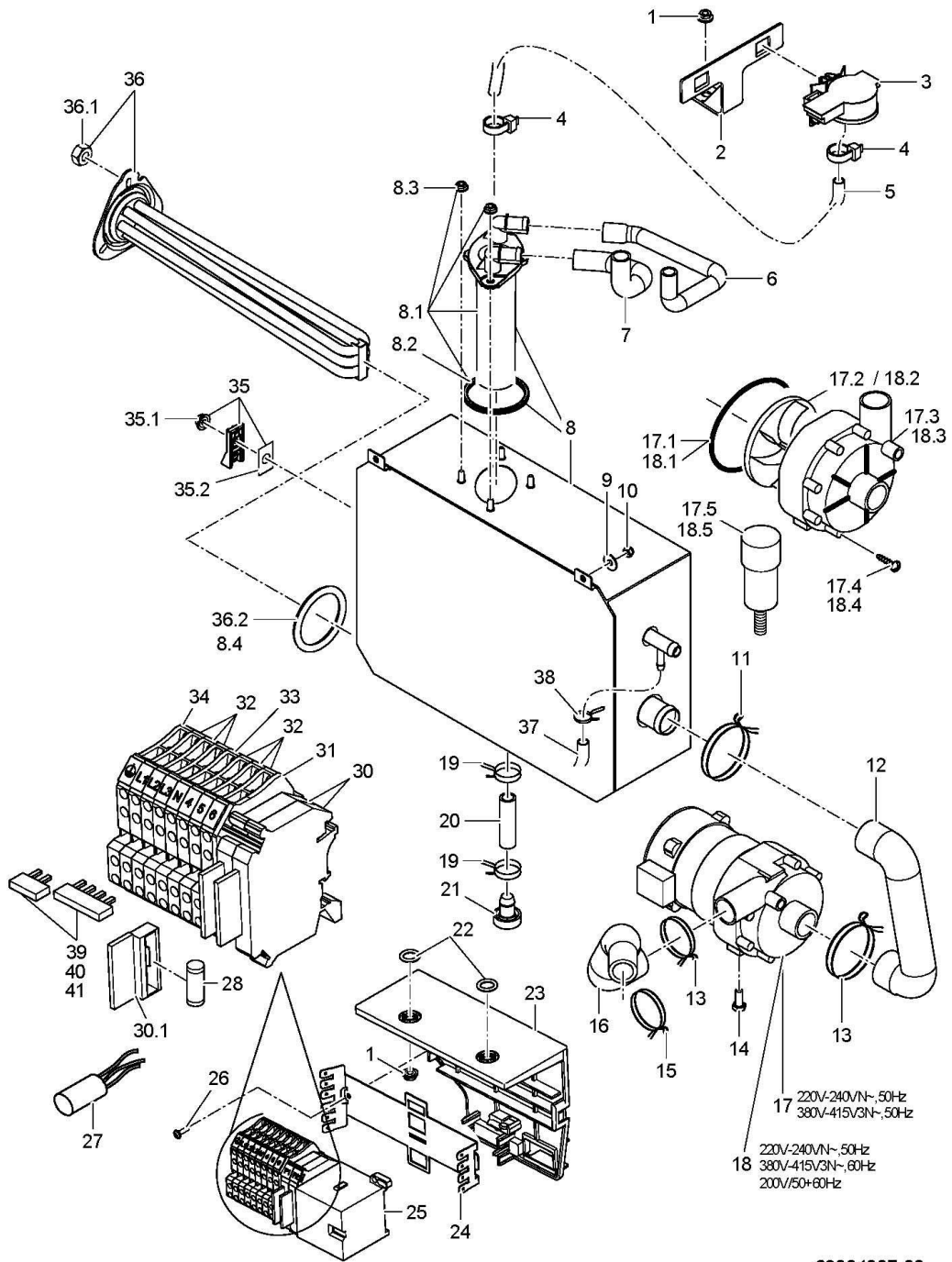
62004007-00

UC-S

Boiler

Item.	Designation	Parts no.:	Pc.	Notes
1	Ratchet nut; M5	21 01 310		
2	Retainer; 53,62 X 104	60004493		
3	Pressure transmitter; 0-30MBAR;5VDC/0,5-3,5V	31 26 044		
4	Cable tie; 100 X 2,5	31 20 175		
5	Hose; DN5 X 1,5	40 01 024		350 mm; "By-the-metre" goods
6	Moulded hose; DN13 X 2,0	62003889		
7	Moulded hose; DN10 X DN13 X 2,0	62003890		
8	Kit boiler	30000120		
8.1	Kit air chamber, boiler	30000115		
8.2	Four-lipped seal; D50,39 X 3,53	30000134		
8.3	Ratchet nut; M5	21 01 310	4	
8.4	O-ring; 46 X 6,0	27 07 085		
9	Washer; D5,3 X D15 X 1,2	22 05 301	2	
10	Hexagonal nut; M5 SELBSTSICHERND	21 05 302	2	
11	Wire hose clamp; D35 X 3	28 02 364		
12	Moulded hose; DN23,5 X DN26,5 X 3,5	62003796		
13	Wire hose clamp; D32,7 X 2,8	28 02 362		
14	Hexagon screw; M5 X 16; A70	20 01 309		
15	Wire hose clamp; D26,8 X 2,5	28 02 360		
16	Moulded hose; DN18 X DN24 X 3,5	62003959		
17	Pump 0.14kW 3/3; 220V/240V/1/50HZ	31 02 561		220V-240VN~/380V-415V3N~,50Hz
17.1	Cord; D=78 X 3; SHOR 50-55;	40 04 023		
17.2	Pump impeller; FÜR UP60/UP30 MIT 50HZ	31 02 466		
17.3	Pump housing; D=80,5MM	31 02 519		
17.4	Screw for pump housing	31 01 118	7	
17.5	Capacitor; 4 MIKRO F / 400V	31 13 171		
18	Pump 0.20kW 3/3; 200-240V/1/50-60HZ	31 02 589		220V-240VN~/380V-415V3N~,60Hz; 200V/50+60Hz
18.1	Cord; D=78 X 3; SHOR 50-55;	40 04 023		
18.2	Pump impeller, installed; FÜR UP60 MIT 60HZ	31 02 587		
18.3	Pump housing; D=80,5MM	31 02 519		
18.4	Screw for pump housing	31 01 118	7	
18.5	Capacitor; 5 MIKRO F	31 13 099		
19	Wire hose clamp; D14,4 X 15,1	28 02 344		
20	Hose; D10 X 2	40 02 034		650 mm; "By-the-metre" goods
21	Plug; D24 X D13,1 X 27	70007962		
22	O-ring; 10 X 2,5	27 07 030	2	
23	Housing; 62 X 121 X 139	60004821		
24	Assembly plate; 0,8 X 61,2 X 175,26	60004819		

For missing items, see next page

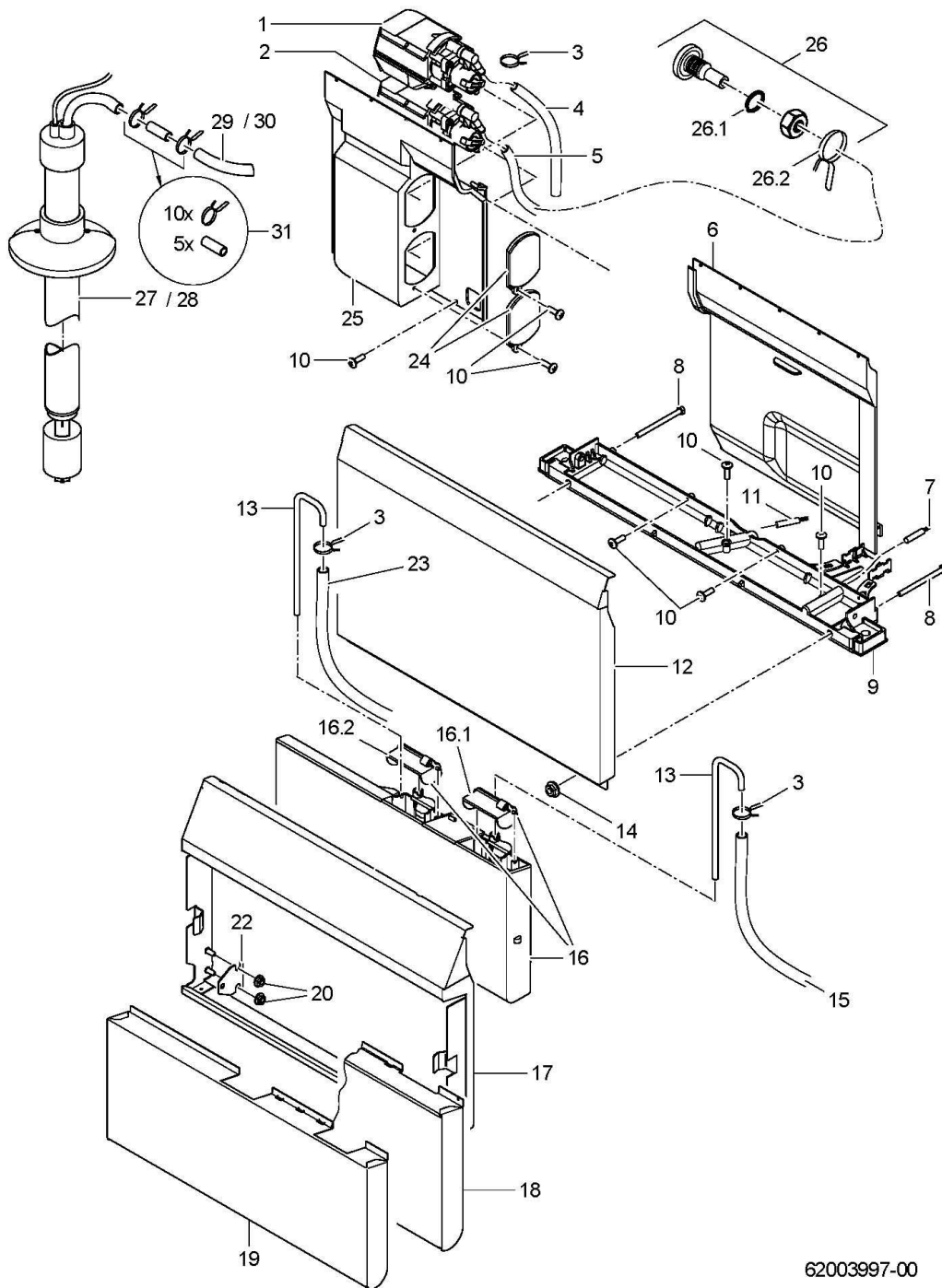


62004007-00

UC-S

Boiler

Item.	Designation	Parts no.:	Pc.	Notes
25	Contacteur B7:3H 1 N/C contact; 220-255V/50-60HZ	31 04 154		
25	Contacteur B7:3H 1 N/C contact; 200V/50-60HZ	31 04 171		Japan
26	PT screw; KB 30 X 10	20 17 005		
27	Radio interference suppression capacitor; 0,22 MF + 2 X 22'000PF	31 13 211		
28	Fine fuse, medium time lag; 250V; 4,0A; 5 X 20	31 11 123		
30	Universal fuse clip	31 09 063	2	
30.1	Securing plug	31 09 072		
31	Cover; D-UT 2,5/4-QUATTRO	31 09 279		
32	UT 4-Quattro double terminal; GRAU	31 09 270	6	
33	Blue UT 4-Quattro, double terminal; BLAU	31 09 271		
34	UT 4-Quattro, potencial earth, double terminal; GRÜN/GELB	31 09 272		
35	Kit thermal sensor	30000126		
35.1	Ratchet nut; M5	21 01 310		
35.2	Heat conducting foil; 24 X 17 X 0,25MM	31 14 096		
36	Kit heating element 4.9KW with fuse	30000125		
36	Kit heating element 6.5KW with fuse	30000124		Japan; Australia
36.1	Hexagonal nut; M5	21 01 203	3	
36.2	O-ring; 46 X 6,0	27 07 085		
37	Hose; DN5 X 1,5	40 01 027		1150 mm; "By-the-metre" goods
38	Wire hose clamp; D8,6 X 1	28 02 348		
39	Fixed bridge kit	60004858		220V-240VN~/ 380V-415V3N~,50+60Hz
40	Fixed bridge kit	60004859		230V2~/230V3~,50+60Hz
41	Fixed bridge kit, Japan	60004860		200V2~/200V3~,50+60Hz

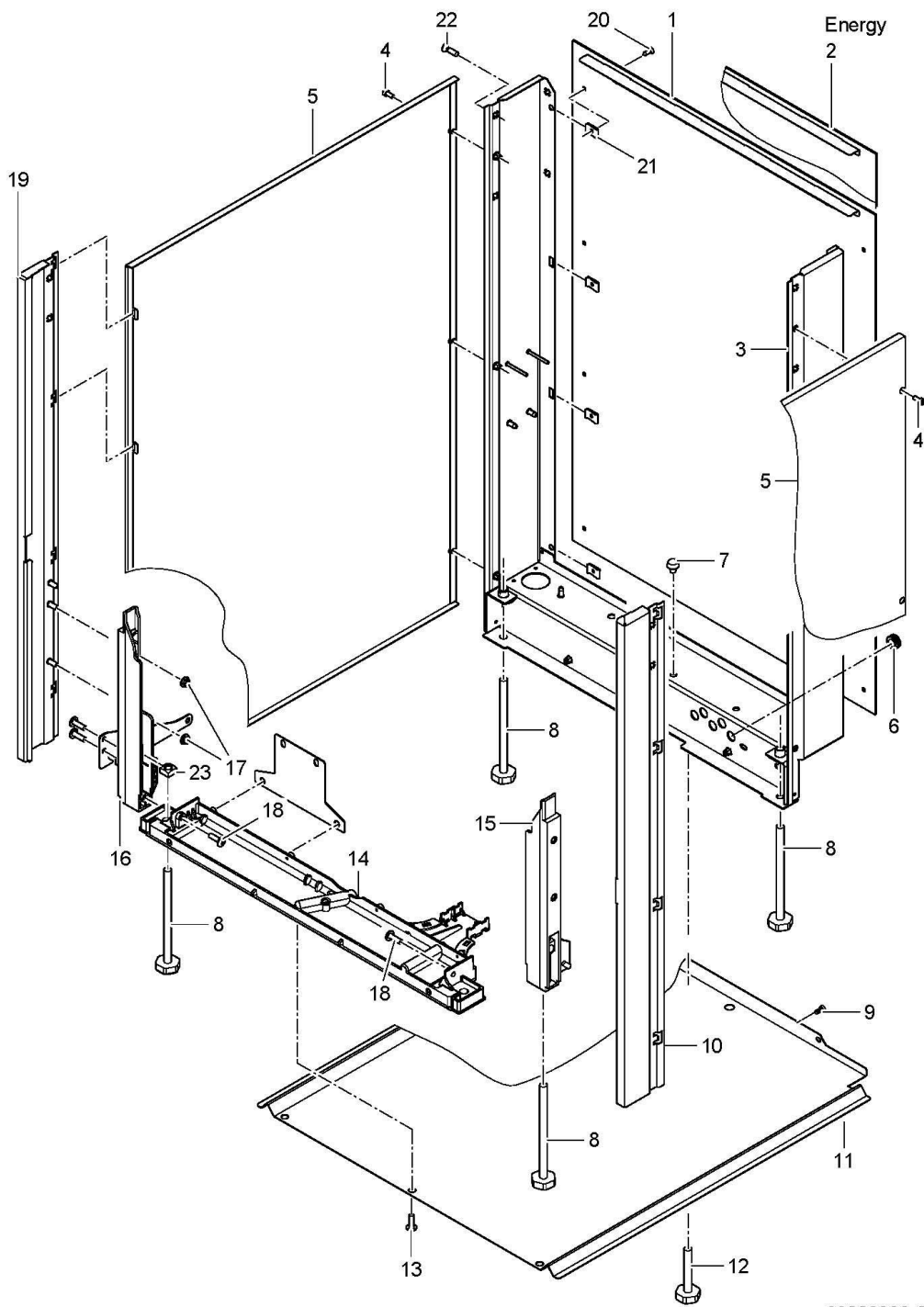


62003997-00

UC-S

Dosage

Item.	Designation	Parts no.:	Pc.	Notes
1	Fluidos DB "Rinse aid" kit; 115-240V/50-60HZ	31 02 598		
2	Fluidos DT "Detergent" kit; 115-240V/50-60HZ	31 02 597		
3	Wire hose clamp; D8,6 X 1	28 02 348		
4	Hose; DN5 X 1,5	40 01 027		1150 mm; "By-the-metre" goods
5	Hose; DN5 X 1,5	40 01 024		270 mm; "By-the-metre" goods
6	SEPARATING PLATE RIGHT	62003787		
7	Magnetic switch; 25,5 X D5,8; 220MM LG	31 24 297		
8	Hexagon screw, M5 X 65	20 01 206	2	
9	TRANSVERSE GIRDER	62003786		
10	PT screw; KB 30 X 10	20 17 005		
11	Magnetic switch; 25,5 X D5,8; 450MM LG	31 24 296		
12	Kit service flap 15 S	30000259		without detergent, freshwater rinse dispenser
13	SUCTION TUBE; D6 X 1,0 X 209	60004729		
14	Ratchet nut; M5	21 01 310	2	
15	Hose; DN5 X 1,5	40 01 027		570mm; "By-the-metre" goods
16	Kit chemical container small	30000118		
16.1	FLAP BLUE; 30,2 X 32,8 X 59,8	60004540		
16.2	FLAP WHITE; 30,2 X 32,8 X 59,8	60004541		
17	SERVICE FLAP 35	62003837		
18	Panelling	62003909		only dosing of rinse aid or detergent
19	Panelling	62003835		with detergent, freshwater rinse dispenser
20	Ratchet nut; M5	21 01 310	4	
22	Sheet metal; 1,25 X 35 X 36	60004662	2	
23	Hose; DN5 X 1,5	40 01 024		270 mm; "By-the-metre" goods
24	Cover	60004588		
25	SEPARATING PLATE LEFT	60004533		
26	Dosing nipple set; M10 X 29; SW5	61005883		
26.1	O-ring; 10 X 2,5	27 07 030		
26.2	Wire hose clamp; D8,6 X 1	28 02 348		

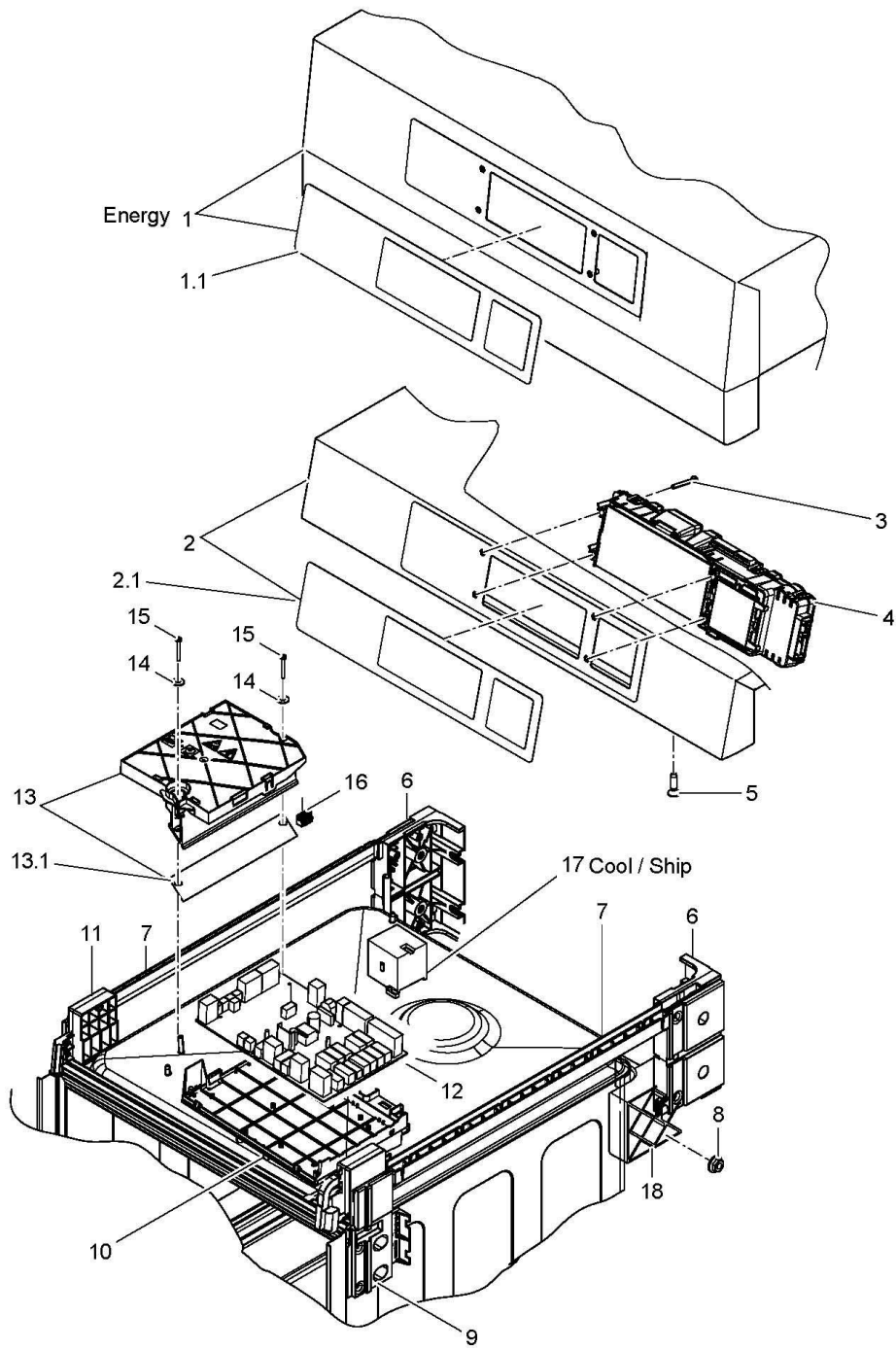


62003998-00

UC-S

Panelling

Item.	Designation	Parts no.:	Pc.	Notes
1	Back panel	62003844		UC-S; Stainless steel
1	Back panel	62003932		UC-S; Plastic
2	Back panel	62003887		UC-S Energy; Stainless steel
2	Back panel	62003960		UC-S Energy; Plastic
3	Base frame, rear	62003698		
4	Cylinder head screw (Hexagon socket); M4 X 9,5	60004873		
5	Kit side panelling S; M	30000258	2	
6	Hose nozzle; 6,25 X D15; D8,5	61004890	5	
7	Buffer; D8 X 14	40 06 023		
8	Adjustable foot; M8 X 129; SW24	60004274	4	
9	Raised head screw; M4 X 8	20 10 310	2	
10	FOOT REST FRONT RIGHT	62003717		
11	Kit floor panel S	30000260		
12	Adjustable foot; M8 X 59; SW24	62003652		
13	PT screw; KB 50 X 12	20 17 009	3	
14	TRANSVERSE GIRDER	62003786		
15	FOOT RIGHT	60004531		
16	FOOT LEFT	60004530		
17	Ratchet nut; M5	21 01 310		
18	PT screw; KB 50 X 16	20 17 007		
19	FOOT REST FRONT LEFT	62003716		
20	Sheet metal screw; ST 3,9 X 13	20 20 310		
21	Sheet metal nut; B 3,9	21 17 301		
22	PT screw; KB 50 X 20	20 17 008		
23	Square nut; M8	21 08 002	2	

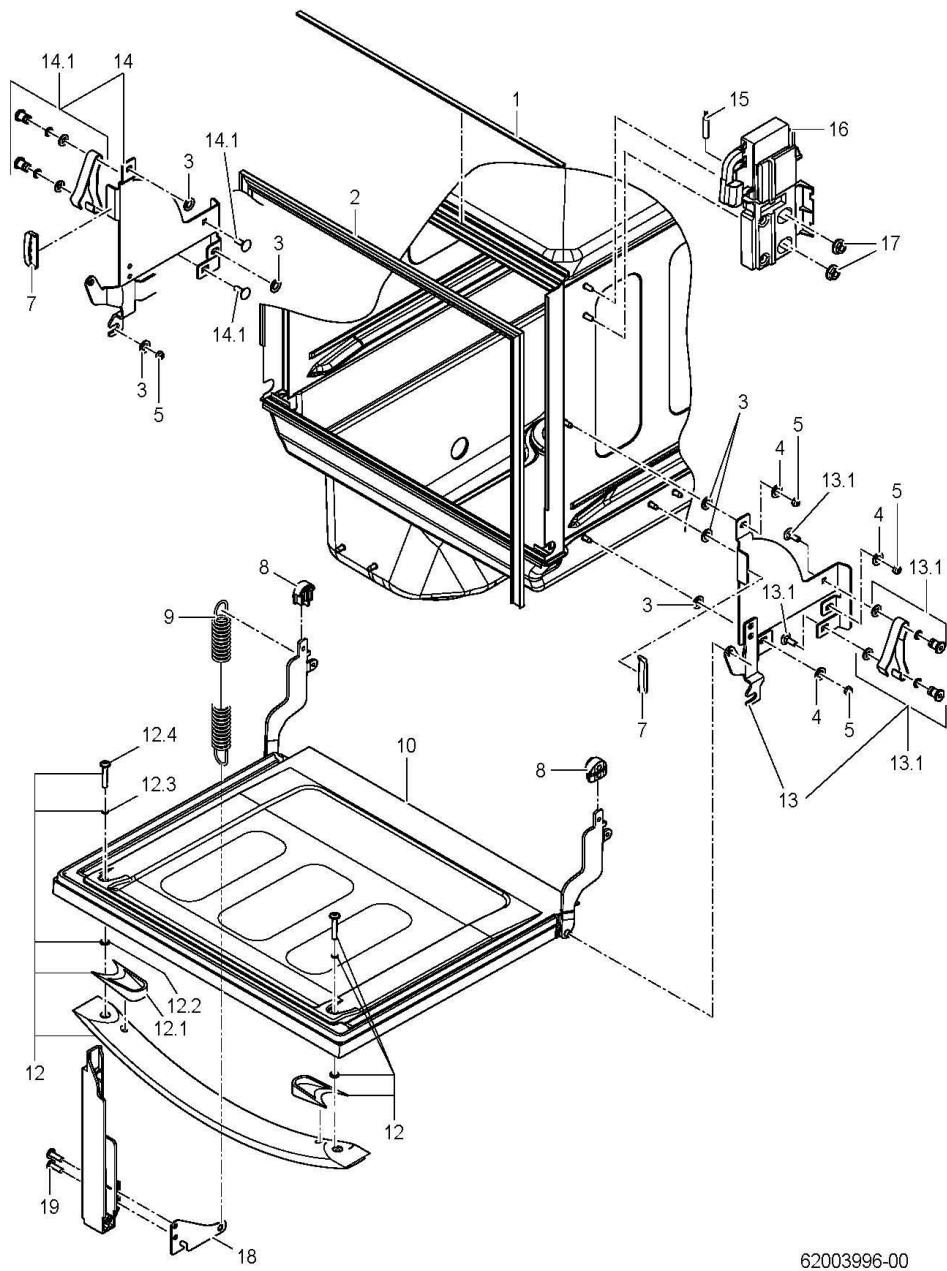


62003999-00

UC-S

Cover plate, electrical parts

Item.	Designation	Parts no.:	Pc.	Notes
1	Cover plate	30000193		UC-S Energy
1.1	OPERATING FOIL; 0,175 X 60 X 268,5	31 24 291		
2	Cover plate	30000192		
2.1	OPERATING FOIL; 0,175 X 60 X 268,5	31 24 291		
3	Countersunk screw, M3 X 25	20 10 023	4	
4	Kit programme control Master	30000181		
5	PT screw; KB 50 X 20	20 17 008	2	
6	Support corner rear; 60 X 89 X 149,5	60004525	2	
7	Guide profile; 439,5 LG	60004526	2	
8	Ratchet nut; M5	21 01 310		
9	Support corner front right; 51,4 X 119,4 X 163,6	60004523		
10	Assembly plate; 61,1 X 223,9 X 272,4	60004522		
11	Support corner left; 36,5 X 97,2 X 163,6	60004524		
12	Kit programme control Slave	30000170		
13	Kit frequency inverter	30000121		
13.1	Heat conducting foil; 0,5 X 39 X 163 MM	60004641		
14	Washer; D4,3 X D12 X 1,0	22 05 300	2	
15	Countersunk screw, M3 X 25	20 10 023	2	
16	BUS CABLE UC-S/M/L/XL; 0,35QMM; 980 LG	60004690		
17	Contacteur B7:3H 1 N/C contact; 220-255V/50-60HZ	31 04 154		UC-S Cool
18	Adapter; 60 X 69,1 X 104,1	62003710		

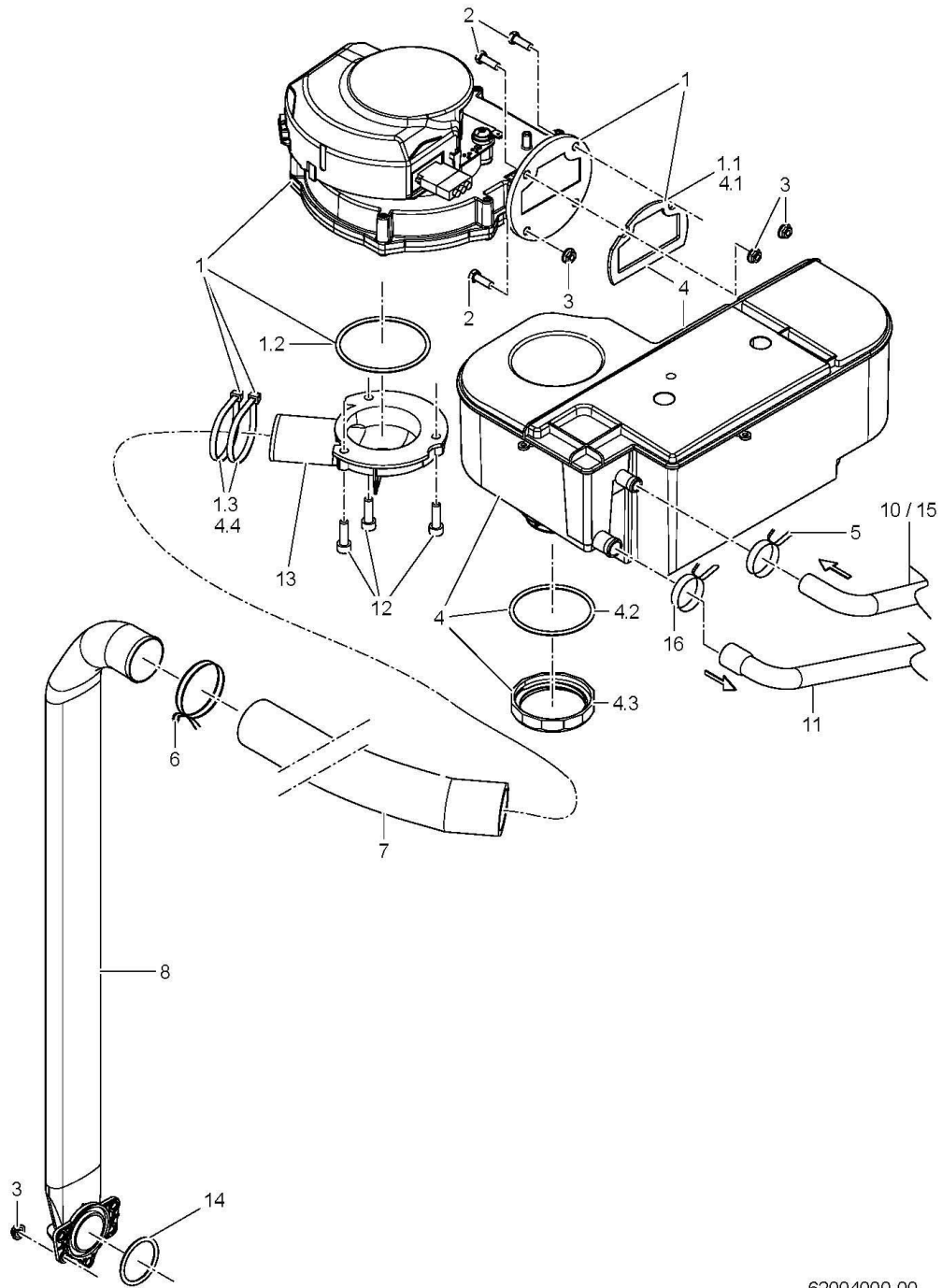


62003996-00

UC-S

Door

Item.	Designation	Parts no.:	Pc.	Notes
1	Adhesive tape; 9 BREIT;2 DICK X 10000	48 03 022		1 roll = 10 m
2	Door seal; 368,7 X 435,9	62003754		
3	Washer; D5,3 X D15 X 1,2	22 05 301		
4	Washer; D5,3 X D10 X 1,0	22 01 300		
5	Hexagonal nut; M5 SELBSTSICHERND	21 05 302		
6	Leaf spring repair kit	60003998		
7	Buffer; 7,93 X 14 X 44,2	60004950	2	
8	Sliding roller; 10,5 X 22,5 X 25	60004595	2	
9	Tension spring; L0=193;L1=360;F1=82	60003697		
10	Door cpl.	62003730		
12	Kit door handle	30000130		
12.1	Spacing piece; 14 X 33,85 X 49,3	62003841	2	
12.2	O-ring; 6 X 2	27 07 012	2	
12.3	O-ring; 5 X 1,2	27 07 070	2	
12.4	Oval head screw with hexagonal socket; M5 X 30 MIT FLANSCH	20 10 308	2	
13	Basic panel, right	60004338		
14	Basic panel, left	60004414		
15	Magnetic switch; 25,5 X D5,8;720MM LG	31 24 295		
16	Support corner front right; 51,4 X 119,4 X 163,6	60004523		
17	Ratchet nut; M5	21 01 310	2	
18	SPRING HOLDER; 1,25 X 50 X 84	60004515	2	
19	PT screw; KB 50 X 16	20 17 007		

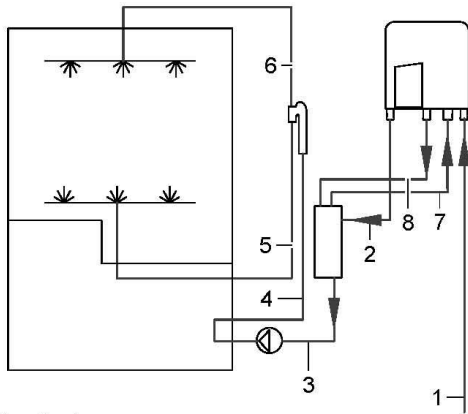


62004000-00

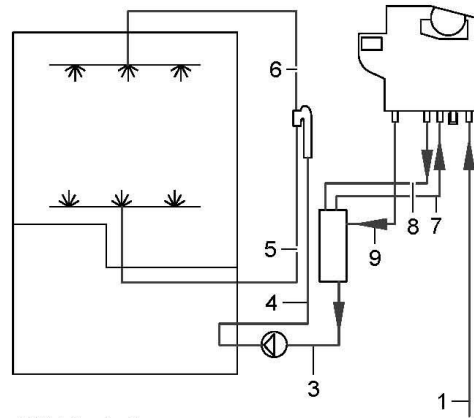
UC-S

Energy (Option)

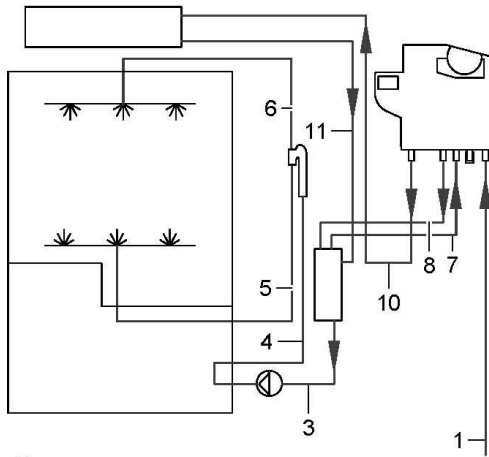
Item.	Designation	Parts no.:	Pc.	Notes
1	KIT RADIAL FAN	30000189		
1.1	SEAL FAN; 51,8 X 79,4 X 2,5	60004606		
1.2	O-ring; 62,5 X 3	27 07 098		
1.3	Cable tie; 200 X 4,7	31 20 015	2	
2	Hexagon screw, M5 X 16; A70	20 01 309	4	
3	Ratchet nut; M5	21 01 310		
4	Kit HEAT EXCHANGER	30000190		
4.1	SEAL FAN; 51,8 X 79,4 X 2,5	60004606		
4.2	O-ring; 56 X 3,0	27 07 086		
4.3	Lock nut; S54 X 4; D56	60003001		
4.4	Cable tie; 200 X 4,7	31 20 015	2	
5	Wire hose clamp; D16,4 X 1,8	28 02 352		
6	Wire hose clamp; D40,5 X 3,2	28 02 365		
7	Moulded hose; DN33 X 2,0	60004516		
8	Riser vapour	62003778		
10				See page 27-28
11				See page 27-28
12	Cylindrical screw, M6 X 20	30000161	3	
13	Intake socket condensation unit; D94 X 127	60004586		
14	Four-lipped seal; D31,34 X 3,53	30000266		
15				See page 27-28
16	Wire hose clamp; D17,3 X 1,8	28 02 353		



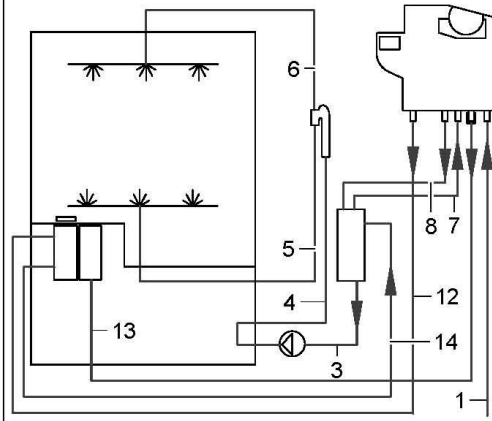
Standard



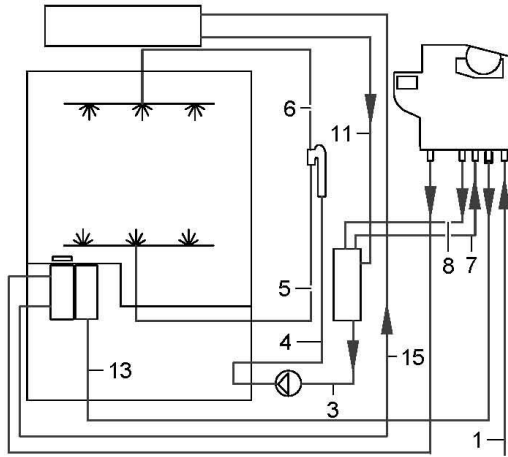
UK / Australia



Energy



Water softener



Energy / Water softener

62004001-00

UC-S

Hoses

Item.	Designation	Parts no.:	Pc.	Notes
1	Moulded hose; DN10 X 3,5	62003838		
2	Moulded hose; DN10 X D11 X 2,0	62003871		
3	Moulded hose; DN23,5 X DN26,5 X 3,5	62003796		
4	Moulded hose; DN18 X DN24 X 3,5	62003959		
5	Moulded hose bottom; DN13,5 X 3,0 X 572,5	62003813		
6	Moulded hose top; DN13,5 X 3,0 X 459	62003814		
7	Moulded hose; DN13 X 2,0	62003889		
8	Moulded hose; DN10 X DN13 X 2,0	62003890		
9	Moulded hose; DN10 X D11 X 2,0	62003871		
10	Moulded hose; DN10 X 2,0	62003808		
11	Moulded hose; DN11 X D13 X 2,0	62003882		
12	Moulded hose; DN10 X 2,0	62003891		
13	Moulded hose; DN10 X 2,0	62003892		
14	Moulded hose; DN10 X D11 X 2,0	62003883		
15	Moulded hose; DN10 X 2,0	62003806		

UC-S

Accessories

Item.	Designation	Parts no.:	Pc.	Notes
1	Drip tray; 19,66 X 594 X 464	62003540		
2	Set of vapour protectors, cpl.	80002875		
3	Plinth, open; 400MM HOCH	75000375		Height: 400 mm
4	Plinth, open, movable; 535MM HOCH	75000380		Height: 535 mm
5	Plinth, closed; 50MM HOCH	75000397		Height: 50 mm
6	Plinth, closed; 85MM HOCH	75000402		Height: 85 mm
7	Plinth, closed; 135MM HOCH	75000405		Height: 135 mm
8	Fixing foot; D90; M8 X 127,5	80002863		4 pieces required per machine
9	Suction tube SD 425 kit for detergent	30000010		
10	Suction tube SD 425 kit for rinse aid	30000011		
11	Dosing tube connection kit (5 pc.)	30000012		
12	Supply cable, 3-wire; 3 X 2,5QMM; 3000 LG	31 23 125		
13	Supply cable, 5-wire; 5 X 2,5QMM; 3000 LG	31 23 132		